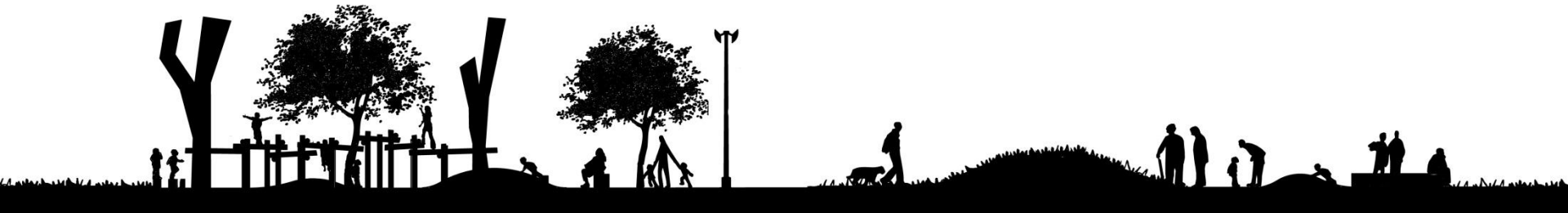




CITY OF CAPE TOWN  
ISIXEKO SASEKAPA  
STAD KAAPSTAD



## Smart Parks – An Approach to Planning of Public Parks

IERM 2015 - Johannesburg

City Parks Department  
**Planning and Development Unit**

Community Services  
City of Cape Town  
Bradley Burger



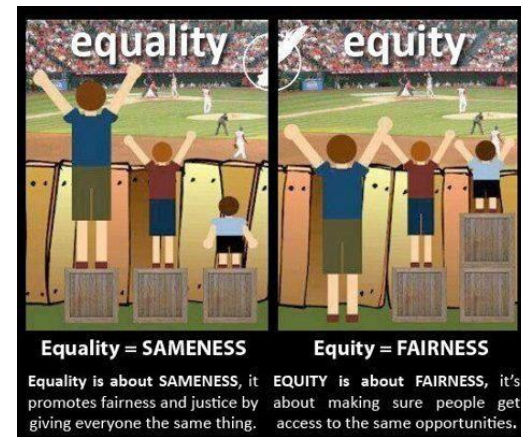
# CONTENTS

1. Introduction – why?
2. City Parks' Guide for Investment – where?
3. Fundamentals & method – what & how?
4. SmartPark Projects
  - Mandela Park, Khayelitsha
  - Symphony Way, Delft
  - NY110, Gugulethu



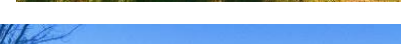
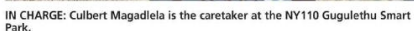
# 1. Introduction – why?

- Cape Town's 'green' spaces
- Vision to action





## Popular area for all, to park off, play and exercise



## 2. Guide for Investment

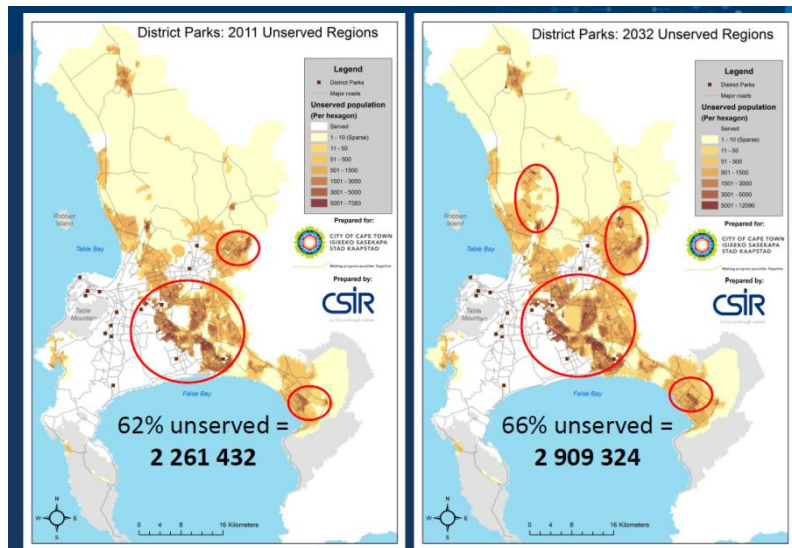
### Principles

- Focus on developing and upgrading parks in the most **underserved communities** to facilitate equitable access to parks at a city wide scale.
- Develop selected **high quality, unique and user friendly** parks that respond to the recreational needs of the communities they serve
- Contribute to **integrated public investment** in parks and other infrastructure and promotes partnerships which seek to maximise the use of limited resources



## 2. Guide for Investment – where?

- Research and modelling
- Underserved areas
- Spatial informants
- Priority investment areas



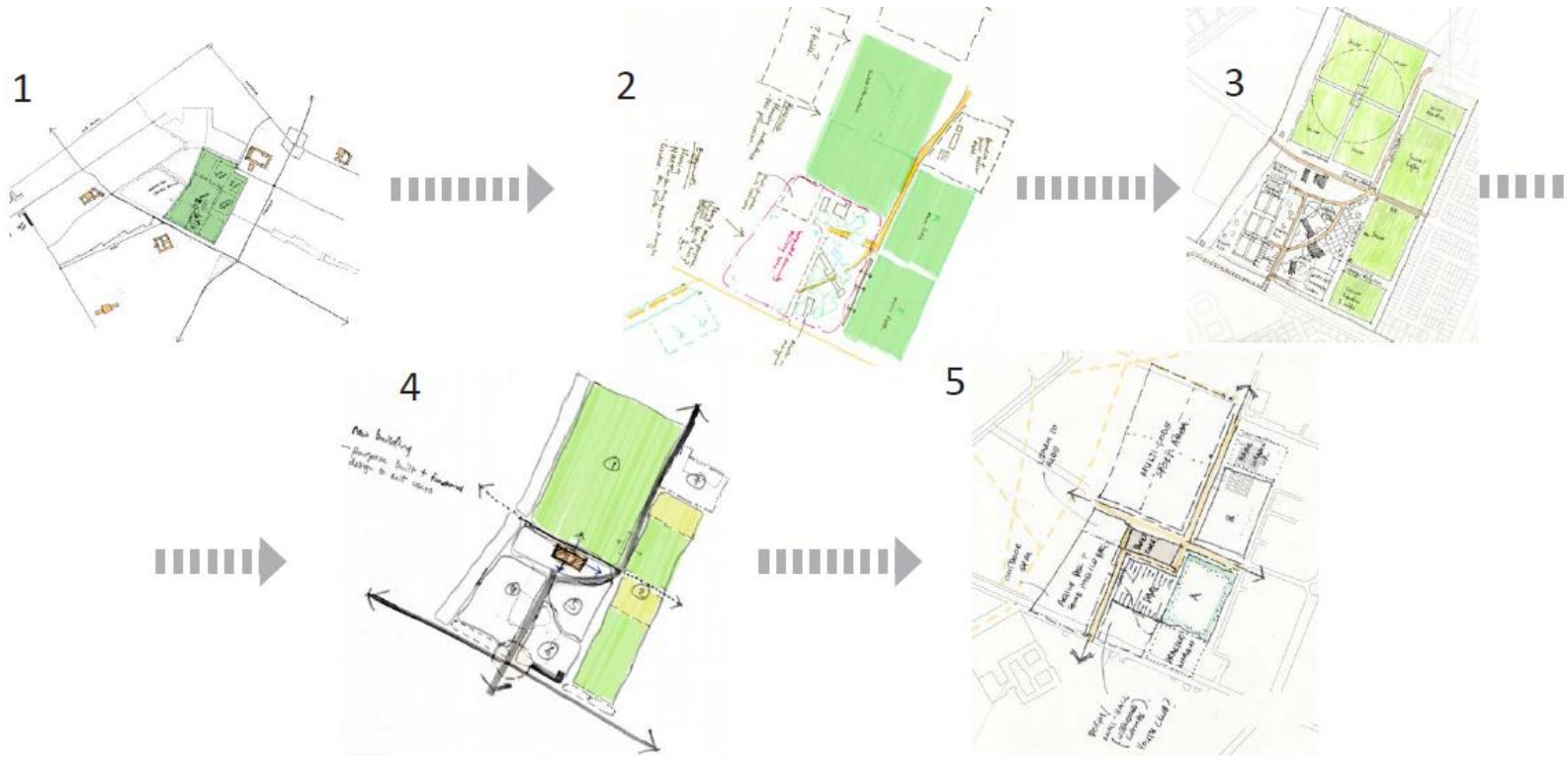
### 3. Fundamental Elements and Method

- **Team** – multidisciplinary team
- **Design approach**– respect context & 'fit', simplicity, robustness
- **Participative** - workshops with residents, workshops with kids
- **Quality & impact** - design, materials, something special



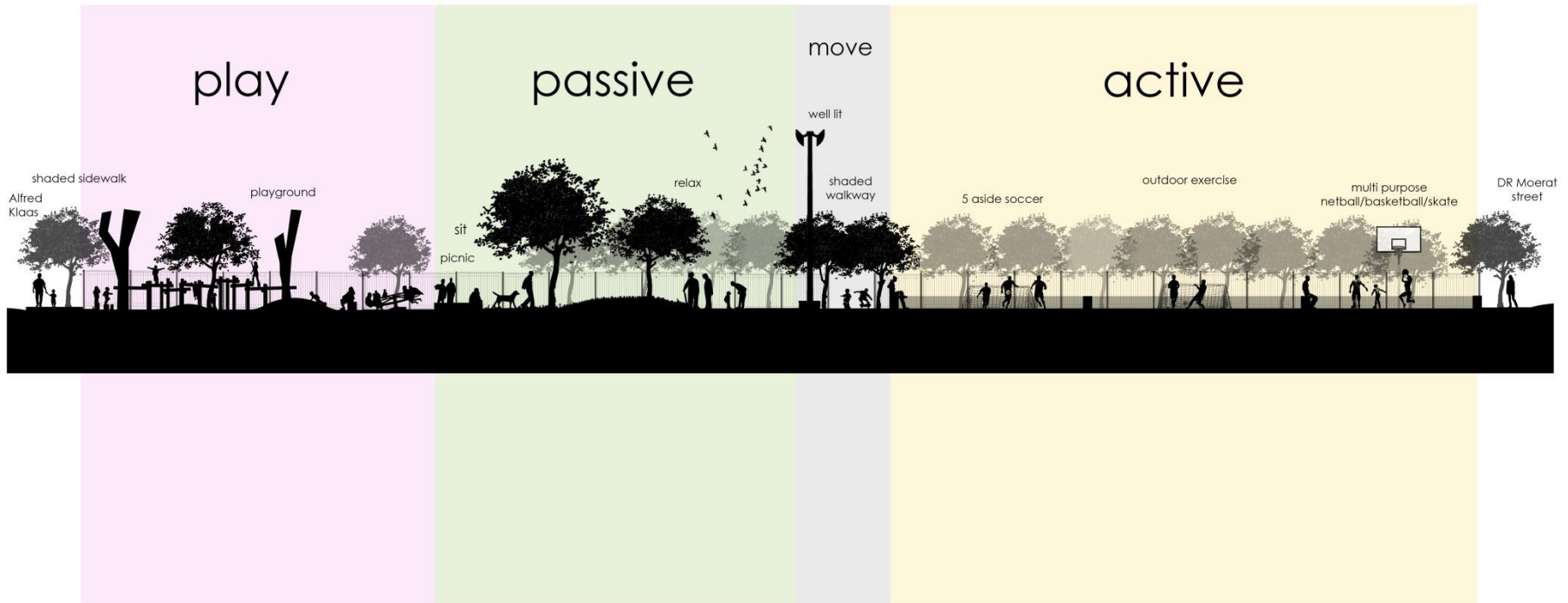
### 3. Fundamental Elements and Method

- **Team** – multidisciplinary team
- **Design approach**– respect context & 'fit', simplicity, robustness
- **Participative** - workshops with residents, workshops with kids
- **Quality & impact** - design, materials, something special



### 3. Fundamental Elements and Method

- **Team** – multidisciplinary team
- **Design approach**– respect context & 'fit', simplicity, robustness
- **Participative** - workshops with residents, workshops with kids
- **Quality & impact** - design, materials, something special



### 3. Fundamental Elements and Method

- **Team** – multidisciplinary team
- **Design approach**– respect context & 'fit', simplicity, robustness
- **Participative** - workshops with residents, workshops with kids
- **Quality & impact** - design, materials, something special

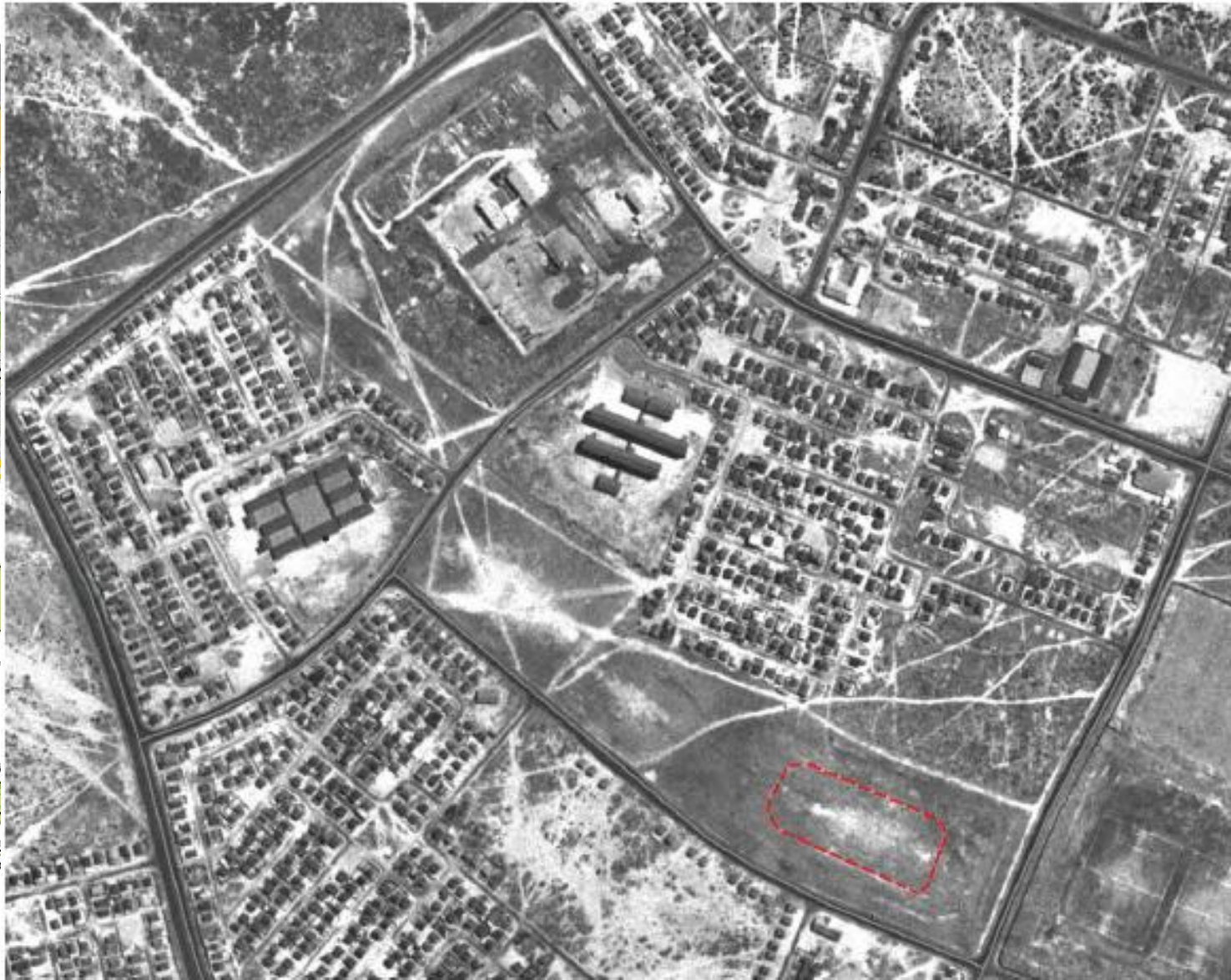
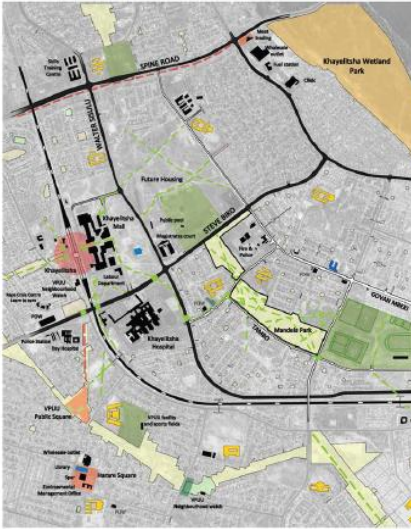


### 3. Fundamental Elements and Method

- **Team** – multidisciplinary team
- **Design approach**– respect context & 'fit', simplicity, robustness
- **Participative** - workshops with residents, workshops with kids
- **Quality & impact** - design, materials, something special



## 4. Smart Park Projects – Mandela Park, Khayelitsha



# PARK UPGRADE & DEVELOPMENT

## MANDELA PARK, KHAYELITSHA

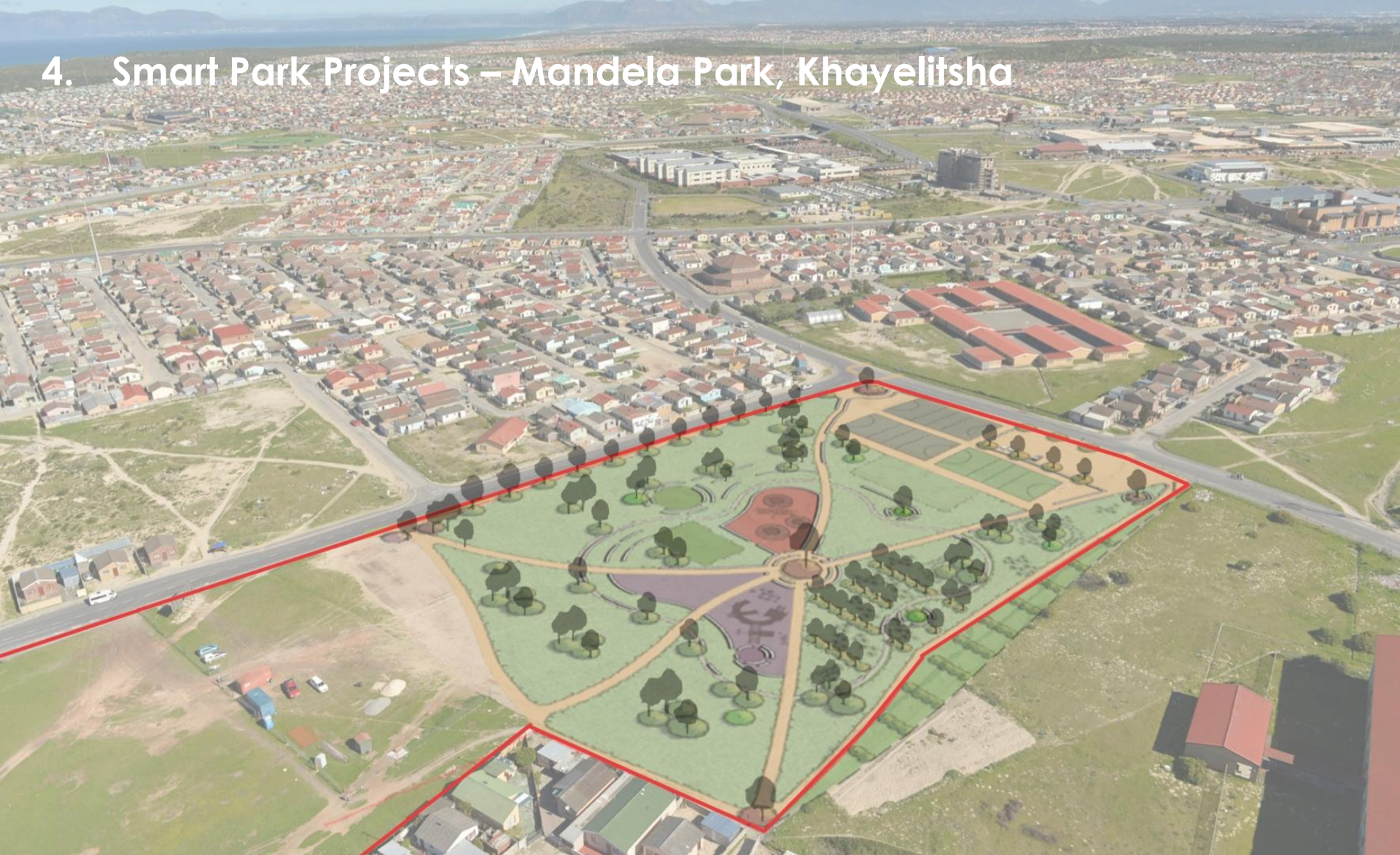


ACTIVE AREAS

RELAXATION/PICNIC AREAS

PLAY AREAS

## 4. Smart Park Projects – Mandela Park, Khayelitsha



PHASE ONE



MOVEMENT



PASSIVE RECREATION



ACTIVE RECREATION



PLAY

## 4. Smart Park Projects – Mandela Park, Khayelitsha



## 4. Smart Park Projects – Mandela Park, Khayelitsha













# PUBLIC OPEN SPACE UPGRADE SYMPHONY WAY TRA, DELFT



CITY OF CAPE TOWN  
ISIXEKO SASEKAPA  
STAD KAAPSTAD

Making progress possible. Together.



CENTRAL PARK UPGRADE



ACTIVE AREAS

RELAXATION/PICNIC AREAS

PLAY AREAS

## 4. Smart Parks Projects - Symphony Way Park, Delft



## 4. Smart Parks Projects - Symphony Way Park, Delft



## 4. Smart Parks Projects - Symphony Way Park, Delft



### Smart Park has brightened up their lives, say residents

Staff Writer

**BLIKKINDORP** residents have welcomed the opening of a Smart Park as a beacon of hope in the impoverished and crime-ravaged settlement.

The Smart Parks concept is a World Design Capital project that uses "design-led" thinking to help transform the way public spaces are developed, according to Belinda Walker.

mayoral committee member for community services.

The Blikkindorp park, which opened earlier this month, includes a paved, low-wall seating, large trees to provide shade, and picnic sites.

The Smart Park project has been piloted in Blikkindorp, Khayelitsha and Gugulethu.

"I feel that this park is the only sort of tangible hope we have here. It is so beautiful and

my children simply love it. I went there a few times for a picnic and it is really nice. We now don't have to go the long distance to enjoy ourselves," Blikkindorp resident Nanaema Sello said.

Another resident, Bill Plimden, said the park would keep children off the streets.

"Finally the kids have something to make their world a bit brighter. Love this

park. Blikkindorp was built at a cost of roughly R30 million by the city in 2007 under the municipality of Helen Zille. It was meant to be a temporary relocation area, but now contains approximately 1 600 one-room structures," he said.

Each Smart Park would include custom-made play areas with robust play equipment.

Walker said.

"We want to develop cen-

trative and fun spaces that appeal to the communities in which they are situated and Smart Parks allow us to do just that."

"The Smart Park has seen the transformation of a vacant area into a comfortable and interesting communal space where people can meet and relax, and importantly where children can play in a safe environment," Walker said.

### City is getting smart with parks so residents can have more fun

BEILINDA WALKER

SOCIETIES today are committed to the idea of "smart" living. Whether it involves improving things with the latest smart phone, using a smart table to read a timeline of events, or even joining the family to watch a movie on a newly mounted smart television, "smart" is regarded as the trend to follow.

The City Parks Department has the expanded activities that support smart living. The concept of Smart Parks is one of the city's World Design Capital

and actively decide on the nature and form of the facilities. Three Smart Parks are being piloted in Blikkindorp, each unique in its design to suit the available space and the community's needs.

City Parks is conscious of the immense value that parks have in neighbourhoods where residents have little or no garden space in areas where there aren't many spaces for children to play. These parks will provide them with a space to call their own.

Residents have shown that play and recreational activities are critical to children's development. Each of the parks will include custom made play

areas incorporating the latest ideas about creating a space where the imagination of children and teenagers can be active.

The play areas will be made of robust, with durable and creative play equipment similar to that provided in the Green Point Urban Park.

The Symphony Way Park in Blikkindorp has at its core a focus on children, this is central and accessible position. Trees, paving, low wall seating and picnic sites will add value to the park and provide places for people to meet and play.

Essentially a previously difficult environment will be transformed

into a comfortable and interesting communal space.

The two larger Smart Parks - Khayelitsha Park in Gugulethu and Mandela Park in Khayelitsha - will offer a lot of spaces for residents to visit these parks.

For those who enjoy spending their free time being active, sports facilities will be available in the form of multi-purpose courts and basketball courts. For those who are just looking to relax and enjoy the fresh air, the parks will be a network of pathways.

City Parks will not be overlooking the activities and features that would draw residents to the park.

Meaningful engagement is critical to the building community ownership and a sense of pride. This is seen in the way that the city is taking a long-term view of the park's long-term sustainability.

Continued use of the public engagement for the first Smart Parks, the Gugulethu Smart Park will include outdoor gym equipment at the sports field and a community garden.

The community of Khayelitsha Park will be specifically for exercise that does not require equipment, such as walking and jogging. The park will also include an amphitheatre for use as an outdoor education site and is expected to be popular with the two nearby schools.

In each of these parks, large trees will be planted in order to give them an immediate sense of place and a sense of shade.

The amenities provided for communities demonstrate our commitment to the well-being of our residents. The City Parks Department hopes to ensure that accessibility, safety and convenience are all elements associated with the Smart Parks concept, and that communities will benefit from and enjoy spending time in their new Smart Parks.

● Belinda Walker is the executive committee member for community services and special projects for the City of Cape Town.



# PARK UPGRADE & DEVELOPMENT

## NY110 PARK, GUGULETHU



PLAY AREAS



RELAXATION/PICNIC AREAS

ACTIVE AREAS

## 4. Smart Park Projects – NY110, Gugulethu











LEFT: KID KIDS: Parents say the park means their children don't have to play in the street. RIGHT: GUGULETHU: Resident Andiswa Mkhize pushes her niece, Amagatha-Magwaza, 5, on the swings.

The Gugulethu Smart Park is the third of several parks across the greater Cape Town that the Cape Argus will be featuring over the coming weeks

# Popular area for all, to park off, play and exercise



KID TOY: The city spent 10 on upgrading the park, adding slides, jungle gyms, four new soccer fields and a basketball hoop.



IN CHARGE: Culbert Magadela is the caretaker at the NY110 Gugulethu Smart Park.



IN CHARGE: Culbert Magadela is the caretaker at the NY110 Gugulethu Smart Park.



IN CHARGE: Culbert Magadela is the caretaker at the NY110 Gugulethu Smart Park.

