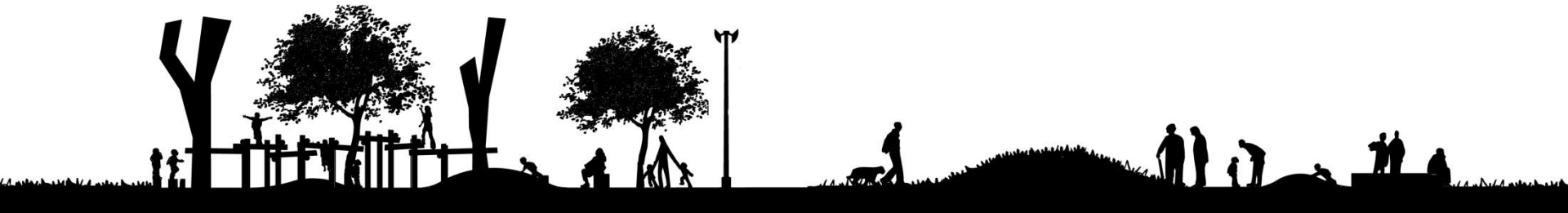




CITY OF CAPE TOWN
ISIXEKO SASEKAPA
STAD KAAPSTAD



Smart Parks – An Approach to Planning of Public Parks

WUP & IERM Congress 2016 – Cape Town

City Parks Department
Planning and Development Unit
Community Services
Bradley Burger



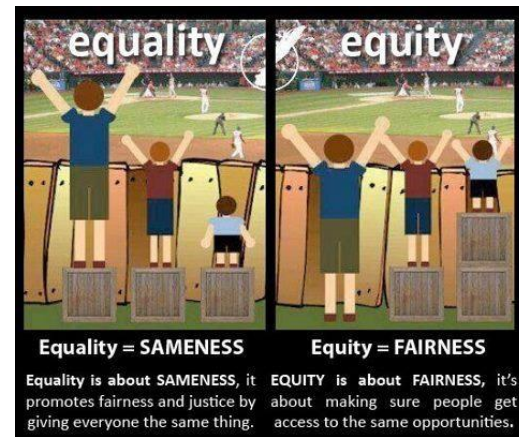
CONTENTS

1. Introduction – why?
2. City Parks' Guide for Investment – where?
3. Fundamentals & method – what & how?
4. SmartPark Projects
 - Phase 1: Mandela Park, Khayelitsha; Symphony Way, Delft; NY110, Gugulethu
 - Phase 2: Seawinds Park, Atlantis



1. Introduction – why?

- Cape Town's 'green' spaces
- Vision to action





LEFT: FOR KIDS: Parents say the park means their children don't have to play in the street. RIGHT: GUGULETHU: Resident Andiswa Mkhize pushes her niece, Amangeli-Matengeni, 5, on the swings.

The Gugulethu Smart Park is the third of several parks across the greater Cape Town that the Cape Argus will be featuring over the coming weeks

Popular area for all, to park off, play and exercise

Debra Randall
Cape Argus Staff Writer

Cape Town's 2017 Integrated Urban Development Strategy (IUDS) has set a goal to create 100 new parks and recreational spaces across the city by 2030. The Gugulethu Smart Park, which opened in May 2016, is the third of several parks across the greater Cape Town that the Cape Argus will be featuring over the coming weeks. The park is a popular area for all, to park off, play and exercise. It features a variety of facilities including a playground, a basketball court, a tennis court, a soccer field, and a community center. The park is also a popular spot for picnics and family outings. The park is located in the Gugulethu area, which is a densely populated neighborhood. The park is a great place for families to spend time together and for the community to come together. The park is a testament to the city's commitment to providing quality recreational spaces for its residents.



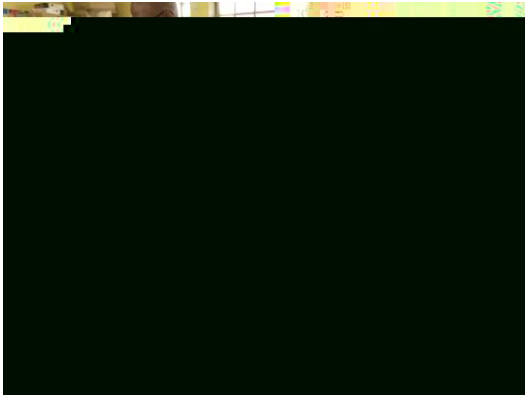
BLACK TULIP: The City spent 10.5m upgrading the park, adding clubs, jungle gym, five new soccer fields and a basketball hall.



IN CHARGE: Culbert Magadela is the caretaker at the NY110 Gugulethu Smart Park. RIGHT: KIDS: Parents say the park means their children don't have to play in the street.



IN CHARGE: Culbert Magadela is the caretaker at the NY110 Gugulethu Smart Park.



2. Guide for Investment

Principles

- Focus on developing and upgrading parks in the most **underserved communities** to facilitate equitable access to parks at a city wide scale.
- Develop selected **high quality, unique and user friendly** parks that respond to the recreational needs of the communities they serve
- Contribute to **integrated public investment** in parks and other infrastructure and promotes partnerships which seek to maximise the use of limited resources



2. Guide for Investment – where?

- Research and modelling
- Underserved areas
- Spatial informants
- Priority investment areas



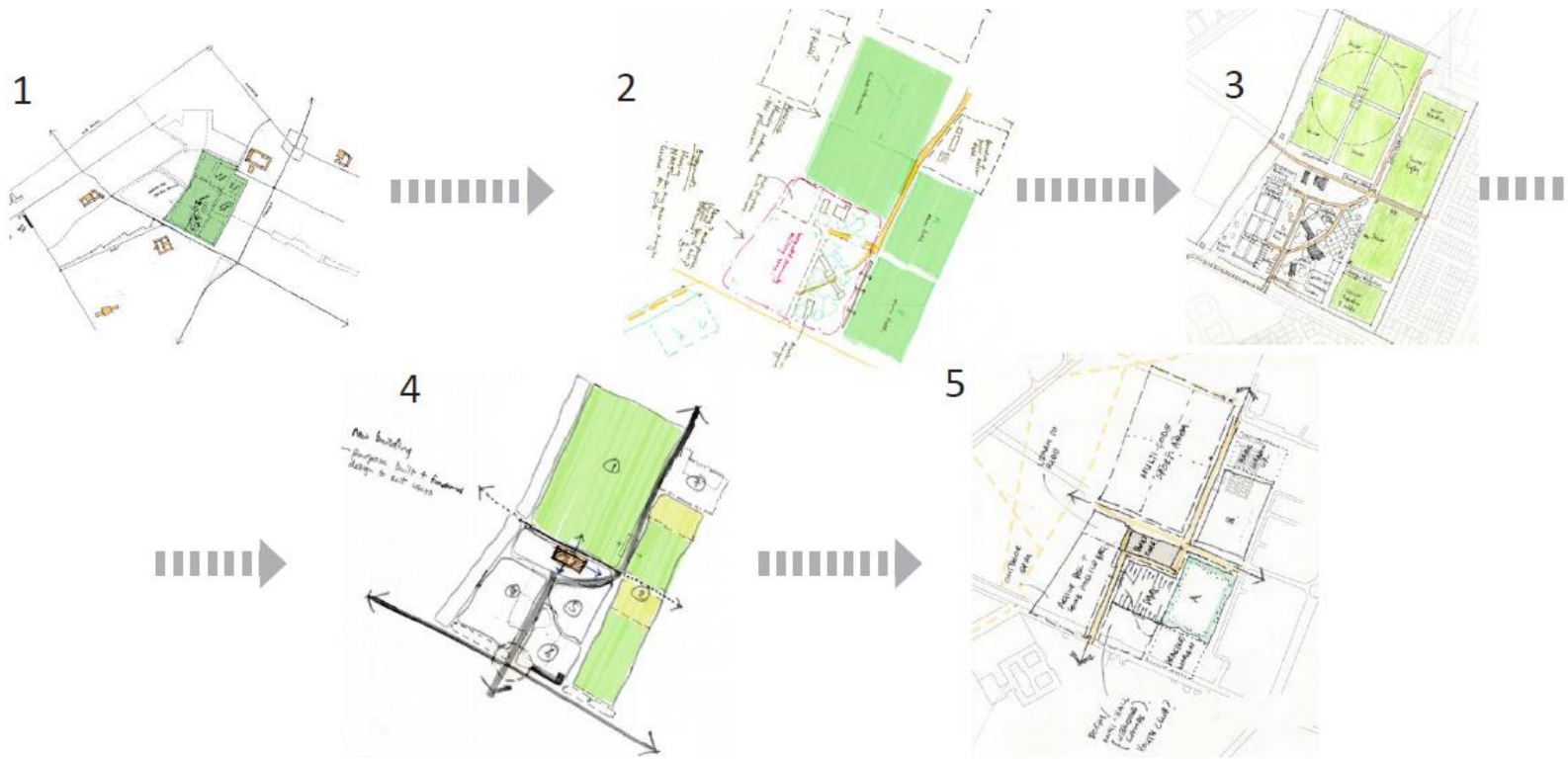
3. Fundamental Elements and Method

- **Team** – multidisciplinary team
- **Design approach**– respect context & 'fit', simplicity, robustness
- **Participative** - workshops with residents, workshops with kids
- **Quality & impact** - design, materials, something special



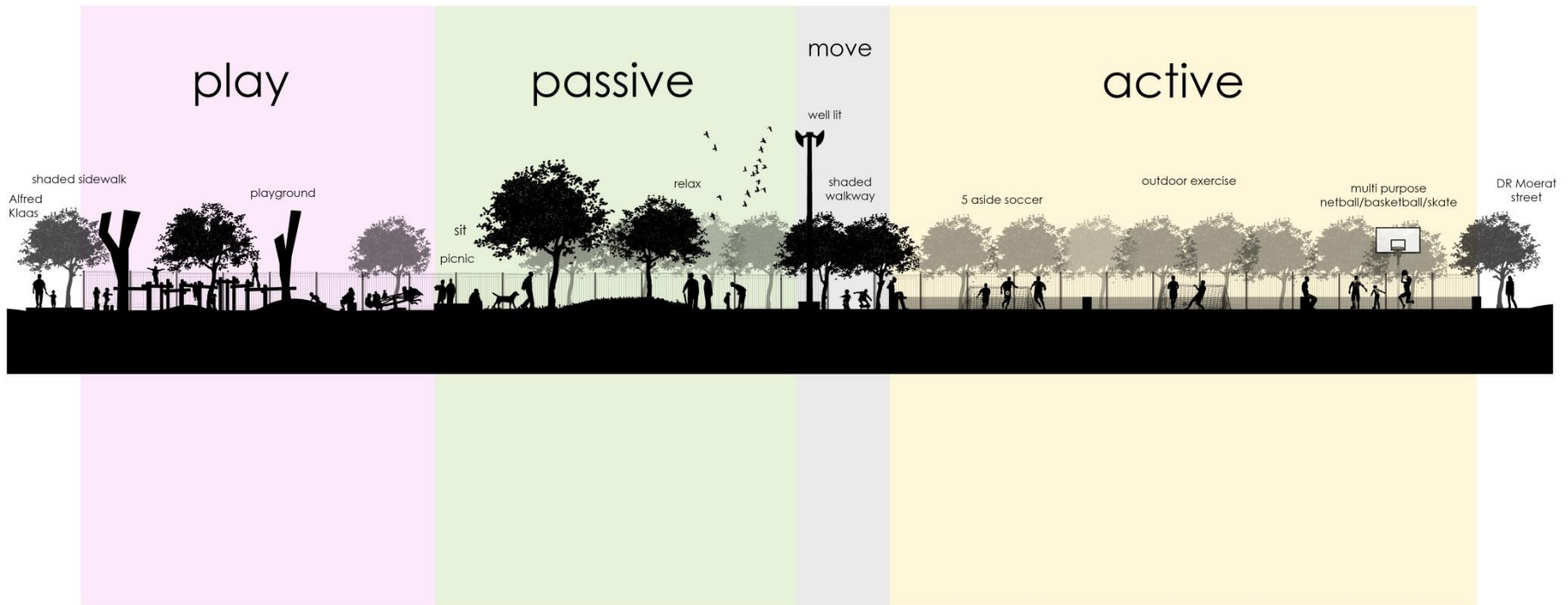
3. Fundamental Elements and Method

- **Team** – multidisciplinary team
- **Design approach**– respect context & 'fit', simplicity, robustness
- **Participative** - workshops with residents, workshops with kids
- **Quality & impact** - design, materials, something special



3. Fundamental Elements and Method

- **Team** – multidisciplinary team
- **Design approach**– respect context & 'fit', simplicity, robustness
- **Participative** - workshops with residents, workshops with kids
- **Quality & impact** - design, materials, something special



3. Fundamental Elements and Method

- **Team** – multidisciplinary team
- **Design approach**– respect context & 'fit', simplicity, robustness
- **Participative** - workshops with residents, workshops with kids
- **Quality & impact** - design, materials, something special

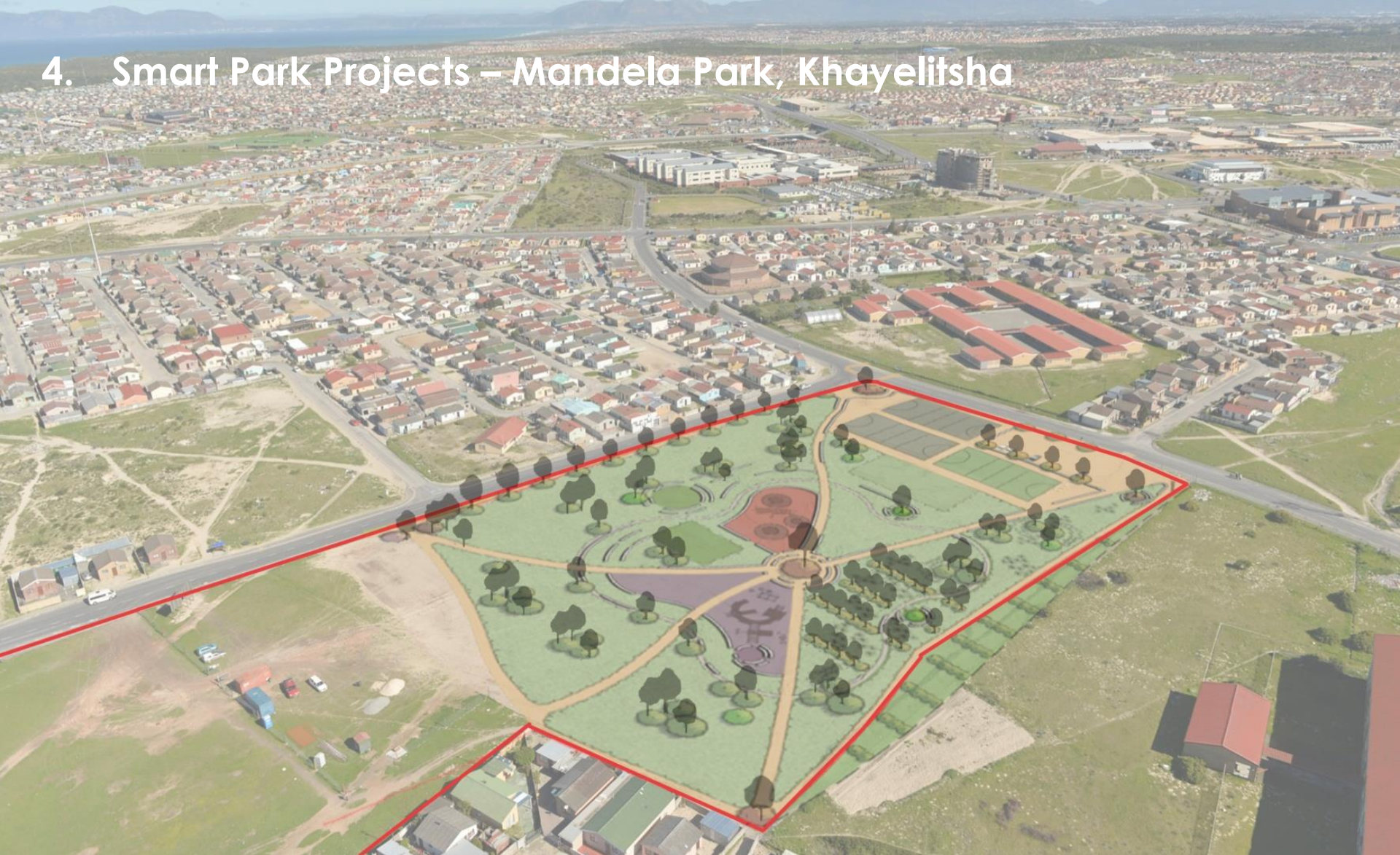


3. Fundamental Elements and Method

- **Team** – multidisciplinary team
- **Design approach**– respect context & 'fit', simplicity, robustness
- **Participative** - workshops with residents, workshops with kids
- **Quality & impact** - design, materials, something special



4. Smart Park Projects – Mandela Park, Khayelitsha



PHASE ONE



MOVEMENT



PASSIVE RECREATION



ACTIVE RECREATION



PLAY

4. Smart Park Projects – Mandela Park, Khayelitsha









PUBLIC OPEN SPACE UPGRADE SYMPHONY WAY TRA, DELFT



CITY OF CAPE TOWN
ISIXEKO SASEKAPA
STAD KAAPSTAD

Making progress possible. Together.



CENTRAL PARK UPGRADE



ACTIVE AREAS

RELAXATION/PICNIC AREAS

PLAY AREAS

4. Smart Parks Projects - Symphony Way Park, Delft



4. Smart Parks Projects - Symphony Way Park, Delft



4. Smart Parks Projects - Symphony Way Park, Delft



Smart Park has brightened up their lives, say residents

Staff Writer

BLIKKESDORP residents have welcomed the opening of a Smart Park as a beacon of hope in the impoverished and crime-ravaged settlement.

The Smart Parks concept is a World Design Capital project that uses "design-led" thinking to help transform the way public spaces are developed, according to Belinda Walker, mayoral committee member for community services.

The Blikkiesdorp park which opened earlier this month includes paving, low-wall seating, large trees to provide shade, and picnic sites.

The Smart Park project has been piloted in Blikkiesdorp, Khayelitsha and Gugulethu.

"I feel that this park is the only sort of tangible hope we have here. It is so beautiful and my children simply love it. I went there a few times for a picnic and it is really nice. We now don't have to go the long way to enjoy ourselves," Blikkiesdorp resident Nomsa Ndle said.

Another resident, Bill Pindang, said the park would keep children off the streets.

"Finally the kids have something to make their world a bit brighter. We love this park. Blikkiesdorp was built as a shack of roughly R20 million by the city in 2007 under the mayorship of Helen Zille. It was meant to be a temporary relocation area, but now contains approximately 1 900 one-room structures," he said.

Each Smart Park would include custom-made play areas with robust play equipment, Walker said.

"We want to develop creative and fun spaces that appeal to the communities in which they are situated and Smart Parks allow us to do just that."

"The Smart Park has seen the transformation of a vacant area into a comfortable and interesting communal space where people can meet and visit, and importantly where children can play in a safe environment," Walker said.

City is getting smart with parks so residents can have more fun

BEILINDA WALKER

As (WDC) 2014 projects demonstrate, actively decide on the nature and areas incorporating the latest ideas into a comfortable and interesting environment. Meaningful engagement is critical. In each of these parks, large trees

The Smart Parks concept is a World Design Capital project that uses "design-led" thinking to help transform the way public spaces are developed, according to Belinda Walker, mayoral committee member for community services.

The Blikkiesdorp park which opened earlier this month includes paving, low-wall seating, large trees to provide shade, and picnic sites.

The Smart Park project has been piloted in Blikkiesdorp, Khayelitsha and Gugulethu.

"I feel that this park is the only sort of tangible hope we have here. It is so beautiful and my children simply love it. I went there a few times for a picnic and it is really nice. We now don't have to go the long way to enjoy ourselves," Blikkiesdorp resident Nomsa Ndle said.

Another resident, Bill Pindang, said the park would keep children off the streets.

"Finally the kids have something to make their world a bit brighter. We love this park. Blikkiesdorp was built as a shack of roughly R20 million by the city in 2007 under the mayorship of Helen Zille. It was meant to be a temporary relocation area, but now contains approximately 1 900 one-room structures," he said.

Each Smart Park would include custom-made play areas with robust play equipment, Walker said.

"We want to develop creative and fun spaces that appeal to the communities in which they are situated and Smart Parks allow us to do just that."

"The Smart Park has seen the transformation of a vacant area into a comfortable and interesting communal space where people can meet and visit, and importantly where children can play in a safe environment," Walker said.



4. Smart Park Projects – NY110, Gugulethu







LESSONS



LESSONS



CITY OF CAPE TOWN
ISIXEKO SASEKAPA
STAD KAAPSTAD

LESSONS



LESSONS



Integrated planning & design approach

- Mixed use urban centres and facility clusters
- Multi-sectoral (transport, health, education, residential etc).
- Public investment as catalyst
- Incremental process



Types of Integrated Facilities

- **Node**

or

Precinct



- **Integration**

- Spatial & physical
- Operational model(programmes, maintenance)
- Working together



CITY OF CAPE TOWN
ISIXEKO SASEKAPA
STAD KAAPSTAD

4. Smart Parks – phase 2: Seawinds



CITY OF CAPE TOWN
ISIXEKO SASEKAPA
STAD KAAPSTAD

4. Smart Parks – phase 2: Seawinds



CITY OF CAPE TOWN
ISIXEKO SASEKAPA
STAD KAAPSTAD

4. Smart Parks – phase 2: Atlantis



CITY OF CAPE TOWN
ISIXEKO SASEKAPA
STAD KAAPSTAD

4. Smart Parks – phase 2: Atlantis



CITY OF CAPE TOWN
ISIXEKO SASEKAPA
STAD KAAPSTAD