



GEORGE MUNICIPALITY: PARKS AND PLAYPARKS - A TEN YEAR PLAN

Priscilla Burgoyne, Parks & Recreation, George Municipality

If home is where the heart is ... a garden is where the soul is.

It has been proven that nations preserving their trees and green spaces such as the Black Forest in Germany are more able to be productive citizens as published in the journal *Science* in 2016



Introduction

- Approximately 150 open green spaces within the urban edge of George.
- Many of these spaces have had play parks erected in the past but due to on-going vandalism and lack of resources for upkeep, much of the equipment is no longer in a functional state.



Introduction

- **Now finally the Municipality has the ability to implement an upgrade to parks.**
- **Will happen systematically as the budgetary constraints allow repairs and upgrades to only a few play parks at a time.**

Introduction



- Play parks that have been chosen for repairs are those that are currently utilized, and are spread over the entire George urban area.
- The challenge is to erect equipment that will not be vandalised & comprised from materials that are not attractive to recyclers

Introduction



- Other areas ripe with promise are the green spaces around rivers which have the potential of being
- The singular most important factor in the success of this endeavour is the support of local communities

Introduction

Two parks of note within our urban area

- **Garden Route Botanical Garden (local municipal nature reserve)**
- **Van Rhiebeeck Garden (Arboretum of indigenous and non-indigenous trees)**

Needs

Chipper...needed as the organic material that fills up the dump is needed to turn into compost mulch for gardens in George



Needs

Signage... bylaws cannot be upheld unless signage is present



Challenges

Dumping is on the rise and is difficult to monitor and fine



Green spaces



- George is a city with an extensive network of green spaces that are mainly interconnected due to the river systems that are present in the city.
- These green spaces around rivers will be cleaned of alien invasive plants and trees trimmed so that the under storey is open so that these spaces can be enjoyed by local residents.

Green spaces



- They can be used for trail runs, hiking and some need to also be wheel chair friendly.
- Some can even be adapted to have treetop playparks
- Challenges include keeping vandals out and the human safety factor.



Budgetary constraints



- Allow only a few upgrades at a time
- If we get creative we can save a huge amount of money



Budgetary constraints



- It is envisioned to partner with a government department to introduce interactive equipment called “mental floss” pushing the spacial limits of early learners enabling them to become more proficient in the sciences

Collaborations



- With the current trend in fitness and health conscious living we want to investigate collaborations with business partners to roll out gym trim apparatus

Other possibilities -- coastal areas

Salinas (Blue Flag beach)

Leentjiesklip

Victoria Bay (our Events beach)

Herold's Bay

Gwaiing

Some challenges include

Need upgrading

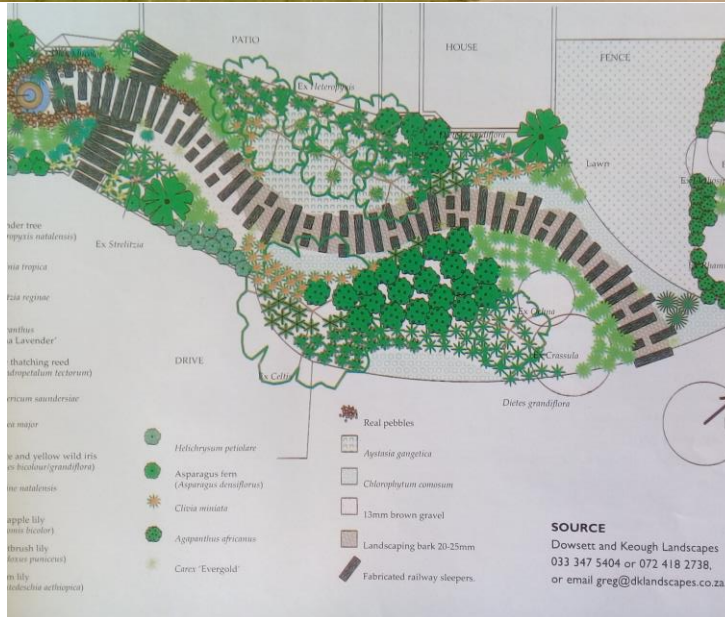
Homeless

vagrants/vandalism/safety

Some strengths - committed residents / clean ablutions



Plan



- Management plans and landscaping is vital with implementation in a three year test programme extended to 10 year plan
- Important - Designing indestructible apparatus
- Funding and collaborations
- By 2029 we aim to be fully operational

Conclusion

- Our staff are dedicated to the relentless pursuit of a better world
- For George that means a SAFE, CLEAN GREEN George

References

- **Positive biodiversity-productivity relationship predominant in global forests. Liang, J. , Crowther, T.W. *et al.* 2016. *Science*, 354(6309).**

"That's all Folks!"