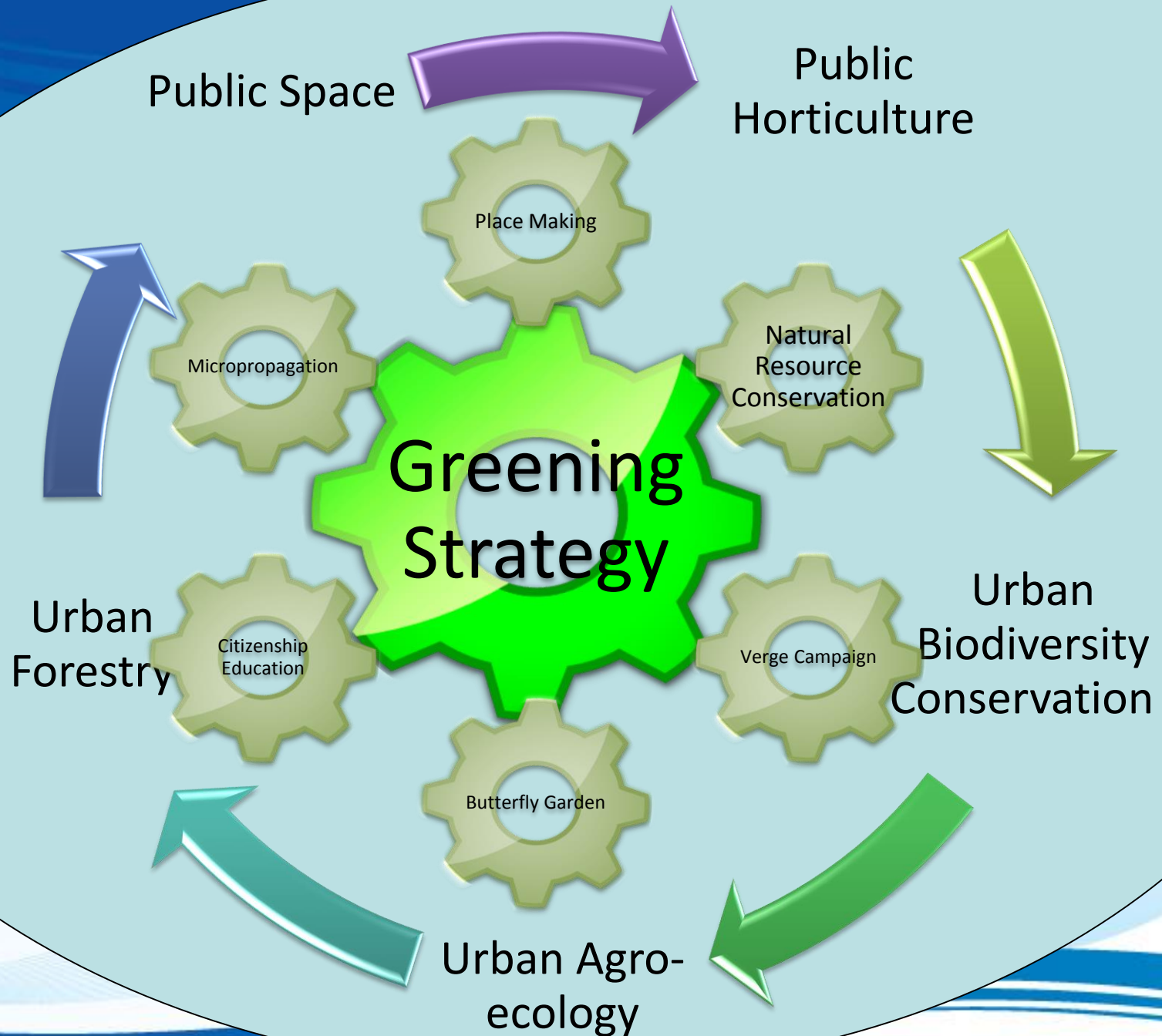




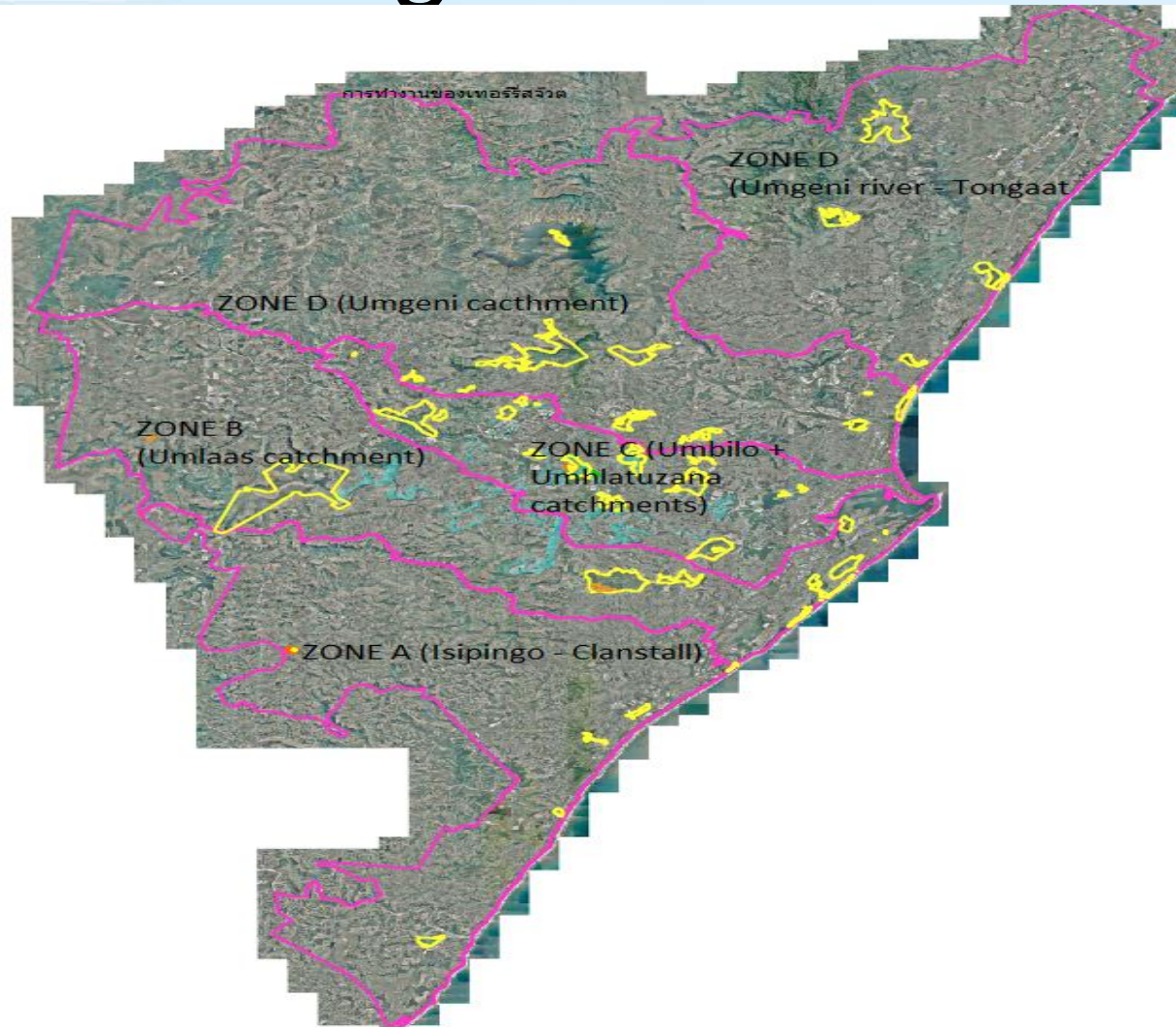
**By 2030 eThekweni will be Africa's
most caring and liveable city**



BIODIVERSITY CONSERVATION IN URBAN CONTEXT



Management Area





Mandate:

- ☐ **NEMPA**
- ☐ **Develop Nature Reserve within the city**
- ☐ **Management of land with Conservation significant (D moss)**
- ☐ **Develop and implement management plans**
- ☐ **NEMBA**
- ☐ **Manage and control the utilization of plants and animals (CITES)**
- ☐ **Ensure protection of threatened and protected species (TOPs)**
- ☐ **CARA**
- ☐ **Control of alien invasive species**



Species Survival



- ❖ Conserving viable populations of rare and threatened species.

(Red and blue duikers, pulmnut vultures, cycads.)



- ❖ Conservation of different threatened terrestrial habitat.

(grasslands, coastal forests, Ridge n hills.)



- ❖ Conservation of aquatic ecosystems. *(wetlands, estuaries, rivers and dams.)*

Challenges

- Vagrants and Squatters
- Poaching of flora and fauna
- Sand mining
- Infrastructural damage (fence cut)
- illegal burials in the Conservation areas



Medicinal plants collectors

One of the challenges we experience in our natural areas are vagrants who are poaching. This man was found by Field Rangers during their patrols with bags full of different plants materials collected and ready for transportation and was chased away and his belongings were taken to the dumping site.



VAGRANTS

Who said storm water drains are used for channeling water **only?!!!!** A vagrant emerging from a storm water drain which has become a home to him. Field Rangers have warned him to stop and we are monitoring the situation.



MORTALITY

This animals were accidentally hit by a car whilst crossing the road.





Long term Solutions

- Proclamation (10 Nature reserves)
- Linkages through (Parks, Cemeteries, water bodies, Golf courses and play lots)
- Training of Environmental monitors (EMI)
- Community involvement (Friends of, Conservancies)
- Awareness
- Benefit sharing
- Partnership with universities for Research



ILLEGAL ACTIVITIES





INTERVENTION

- **Ethekhini traditional healers association:-** Traditional healers, Muthi gatherers, Herb sellers, NGO`s, Faith groups, “Community outreach program”.





Mitigation to specific problems

- Silverglen medicinal nursery (partnered with MUT and Traditional healers)
- New Germany Bird aviary
- Animal rehabilitation centres /New Germany nature reserve (MoE with Crow)



By laws

- Land invasion
- Problem animal control
- Natural resource harvesting
- Alien plants removal
- Nuisance



Thank you

