

CRITERIA FOR EPIP PROJECT FUNDING MODE AND IMPLEMENTATION

WUP & IERM CONGRESS
CAPE TOWN
27/09/2016

MR. MP GAVHI



environmental affairs

Department:
Environmental Affairs
REPUBLIC OF SOUTH AFRICA



ENVIRONMENTAL PROTECTION &
INFRASTRUCTURE PROGRAMMES



EXPANDED PUBLIC WORKS PROGRAMME

Outline

- Background of EPIP
- Programme Focus Areas
- Process for soliciting EPIP projects
- Criteria for EPIP projects
- Planning phase
- Implementation



environmental affairs
Department:
Environmental Affairs
REPUBLIC OF SOUTH AFRICA



ENVIRONMENTAL PROTECTION &
INFRASTRUCTURE PROGRAMMES



EXPANDED PUBLIC WORKS PROGRAMME

Departmental Mandate

The mandate of the Department is underpinned by the Constitution and all other relevant legislation and policies

Section 24 (b) of the Constitution:

All South Africans have a Constitutional right to an environment that is not harmful to their health or well-being, and to have the environment protected, for the benefit of present and future generations



environmental affairs

Department:
Environmental Affairs
REPUBLIC OF SOUTH AFRICA

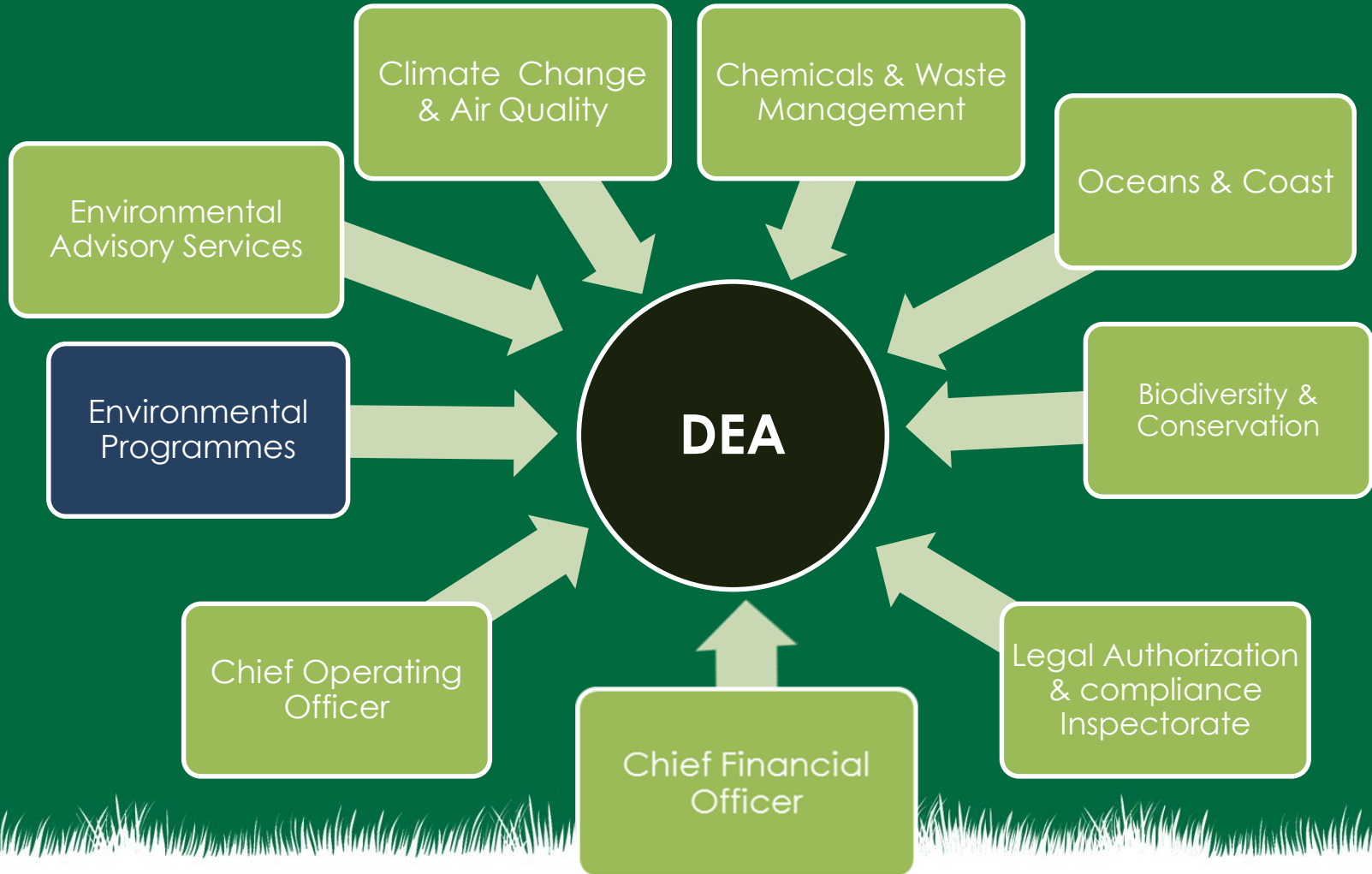


ENVIRONMENTAL PROTECTION &
INFRASTRUCTURE PROGRAMMES



EXPANDED PUBLIC WORKS PROGRAMME

DEA Organogram (9)



environmental affairs

Department:
Environmental Affairs
REPUBLIC OF SOUTH AFRICA

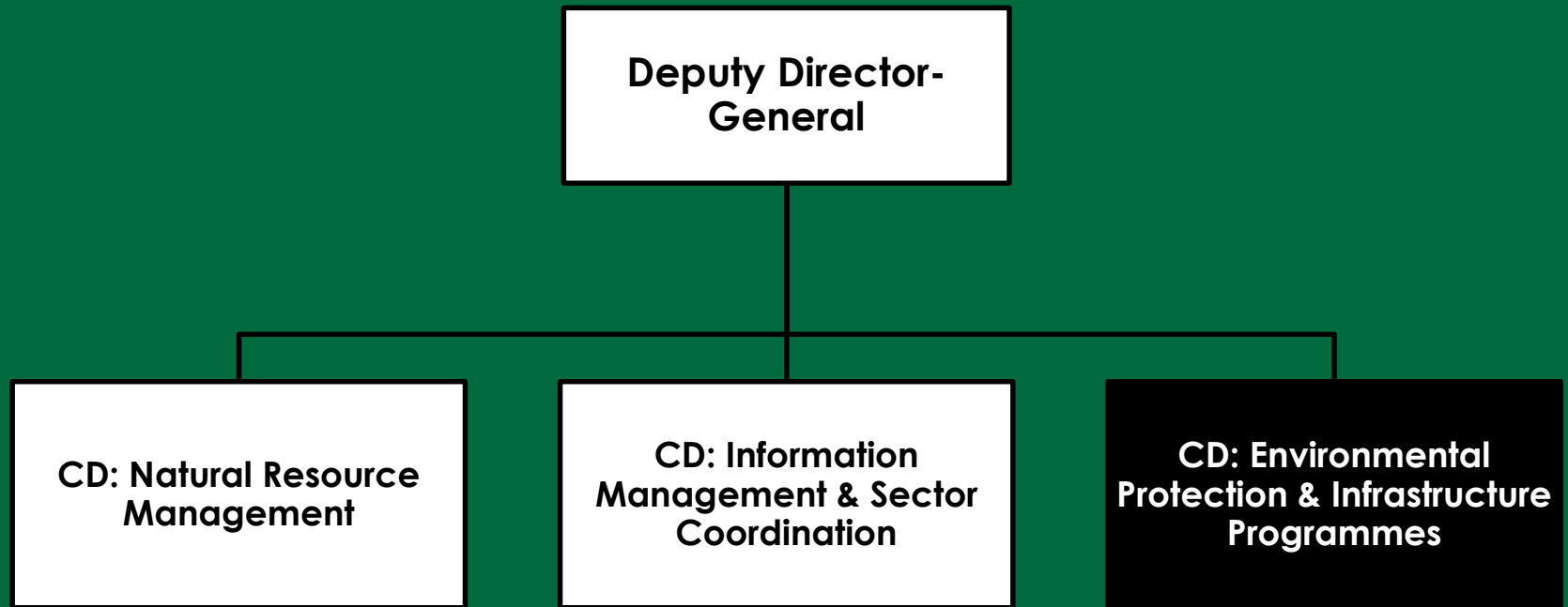


ENVIRONMENTAL PROTECTION &
INFRASTRUCTURE PROGRAMMES



EXPANDED PUBLIC WORKS PROGRAMME

Environmental Programmes (EP) Branch



environmental affairs

Department:
Environmental Affairs
REPUBLIC OF SOUTH AFRICA

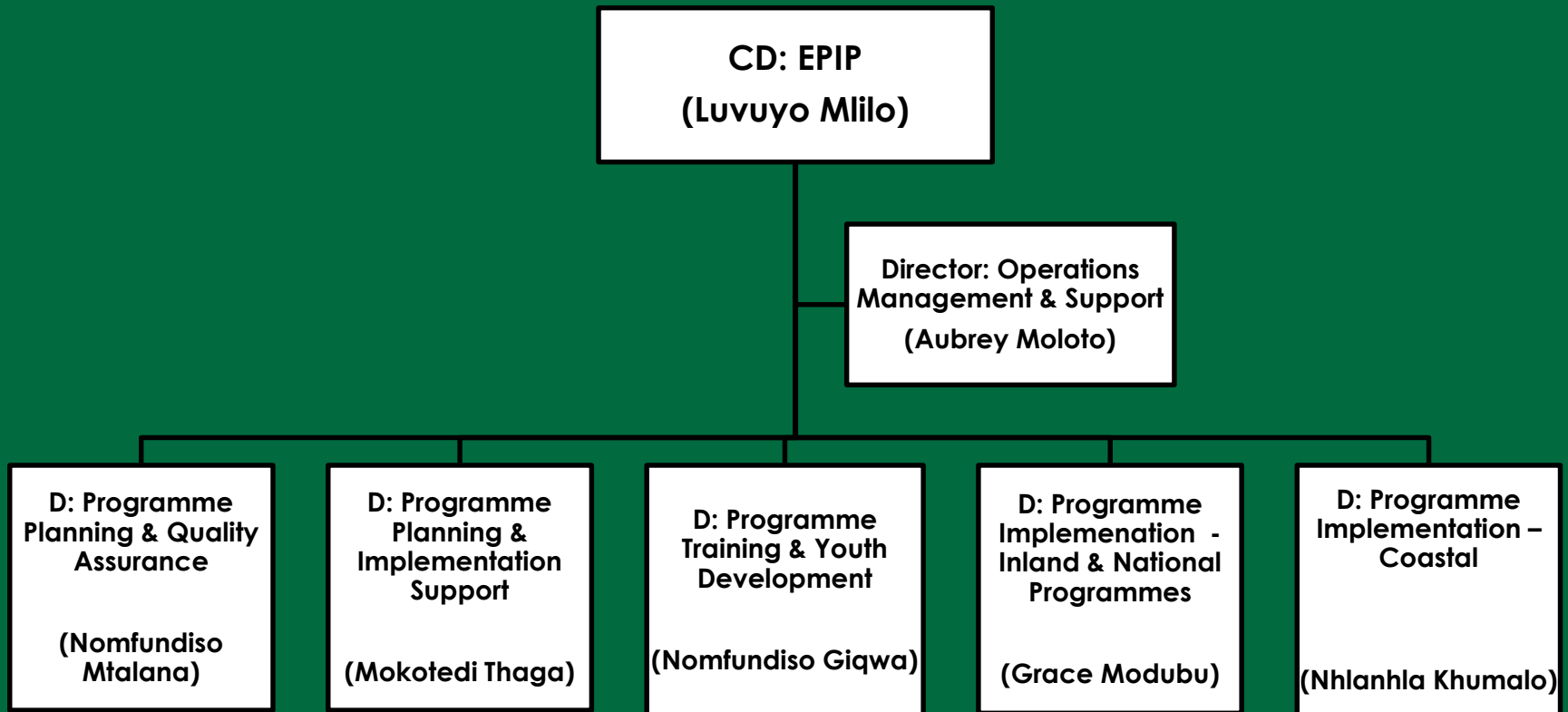


ENVIRONMENTAL PROTECTION &
INFRASTRUCTURE PROGRAMMES



EXPANDED PUBLIC WORKS PROGRAMME

EPIP Organogram



environmental affairs

Department:
Environmental Affairs
REPUBLIC OF SOUTH AFRICA



ENVIRONMENTAL PROTECTION &
INFRASTRUCTURE PROGRAMMES



EXPANDED PUBLIC WORKS PROGRAMME

EPIP DIRECTORATES FUNCTIONS

DIRECTORATE	PURPOSE	FUNCTIONS
1. Operations Management and Support	Provide management support in the operations of the Chief Directorate: EPIP	Manage projects business plan review and amendments.
2. Programme Planning and Quality Assurance	Identify and guide planning of projects and provide support to the implementation of the EPIP of DEA as well as the programme's policy development and review through research.	Undertake all engagements relating to the initiation of projects with all affected stakeholders including other spheres of government.
3. Programme Planning and Implementation Support	Offer technical financial and contract administration support in planning and implementation of EPIP within EP Branch.	Provide technical support to the planning and implementation of EPIP in a form of Architectural, Horticultural, Engineering and Quantity Surveying Services.

Background (cont.)

EPIP Directorates

DIRECTORATE	PURPOSE	FUNCTIONS
4. Programme Training and Youth Development	Guide, coordinate and manage the planning and reporting of accredited, non-accredited training and the Youth Environmental Service projects within the EPIP.	Manage the process of planning and quality assurance for all training interventions for sub-programmes within EPIP.
5. Programme Implementation: Inland and National Programmes	Manage the implementation of all EPIP National programmes and projects within the Inland Provinces i.e. Gauteng; North-West; Mpumalanga; Limpopo; and Free State.	Manage the implementation of projects within the EPIP National programmes and projects across all the Inland provinces in line with approved business plans.
6. Programme Implementation: Coastal	Manage the implementation of all EPIP projects within the Coastal Provinces i.e. KwaZulu-Natal; Eastern Cape; Western Cape and Northern Cape.	Manage the implementation of projects within the EPIP across the Coastal provinces in line with approved business plans.

Purpose & Goal of EPIP

Purpose:

To manage the identification, planning and implementation of the Environmental Protection and Infrastructure Programmes throughout the country under the Expanded Public Works Programme using labour intensive methods targeting the unemployed, youth, women, people with disabilities while promoting SMMEs

Goal: Poverty alleviation



environmental affairs

Department:
Environmental Affairs
REPUBLIC OF SOUTH AFRICA



ENVIRONMENTAL PROTECTION &
INFRASTRUCTURE PROGRAMMES



EXPANDED PUBLIC WORKS PROGRAMME

Overall Objectives of EPIP

- Better environmental management practices
- Job creation
- SMME Support Development
- Skills Development



environmental affairs
Department:
Environmental Affairs
REPUBLIC OF SOUTH AFRICA



ENVIRONMENTAL PROTECTION &
INFRASTRUCTURE PROGRAMMES



EXPANDED PUBLIC WORKS PROGRAMME

EPIP Focus Areas (7)

- Greening & Open Space Management
- People & Parks
- Wildlife Economy
- Working for the Coast
- Working for Land
- Working on Waste
- *Youth Environmental Service*



environmental affairs

Department:
Environmental Affairs
REPUBLIC OF SOUTH AFRICA



ENVIRONMENTAL PROTECTION &
INFRASTRUCTURE PROGRAMMES



EXPANDED PUBLIC WORKS PROGRAMME

Greening & Open Space Management

Strategic Objectives

- Restoration, enhancing and rehabilitation of open spaces
- Maximize measures towards pollution mitigation
- Improve climate change adaptation through minimization of biodiversity loss
- Encourage use of greener technologies to mitigate against environmental degradation



environmental affairs

Department:
Environmental Affairs
REPUBLIC OF SOUTH AFRICA



ENVIRONMENTAL PROTECTION &
INFRASTRUCTURE PROGRAMMES



EXPANDED PUBLIC WORKS PROGRAMME

People & Parks Focus Area



Strategic Objectives

- Biodiversity conserved, protected and threats mitigated.
- Fair access and equitable sharing of benefits from biological resource promoted.
- Biological resources sustainably utilized and regulated.
- Improved socio-economic benefits within the environmental sector.



environmental affairs

Department:
Environmental Affairs
REPUBLIC OF SOUTH AFRICA



ENVIRONMENTAL PROTECTION &
INFRASTRUCTURE PROGRAMMES



EXPANDED PUBLIC WORKS PROGRAMME

Wildlife Economy Focus Area



Strategic Objectives

- Fair access and equitable sharing of benefits arising from bio prospecting involving indigenous biological resources promoted
- Biological resources sustainability utilized and regulated.
- Improved socio-economic benefits within the environmental sector.



ENVIRONMENTAL PROTECTION &
INFRASTRUCTURE PROGRAMMES



EXPANDED PUBLIC WORKS PROGRAMME

Working for the coast



Strategic Objectives

- Dune belt Management—where there are signs of trampling, erosion etc.
- Implementation of estuary management plans
- Erosion Management in catchments (dongas)



environmental affairs
Department:
Environmental Affairs
REPUBLIC OF SOUTH AFRICA



ENVIRONMENTAL PROTECTION &
INFRASTRUCTURE PROGRAMMES



EXPANDED PUBLIC WORKS PROGRAMME

Working for Land Focus Area



Strategic Objectives

- To restore and rehabilitate degraded land
- To encourage biodiversity
- Curtailing of bush encroachment
Mitigate Bush Encroachment
- Mitigate loss of top soil which will enhance ecological integrity of the ecosystem
- Encourage better land use practices
- Environmental education and awareness



environmental affairs

Department:
Environmental Affairs
REPUBLIC OF SOUTH AFRICA



ENVIRONMENTAL PROTECTION &
INFRASTRUCTURE PROGRAMMES



EXPANDED PUBLIC WORKS PROGRAMME

Working on Waste

Strategic Objectives

- Create support mechanisms for the protection of environmental quality
- Create sustainable livelihoods through recycling of waste (waste collection & minimization)
- Support the use of environmentally friendly waste disposal technology
- Promote environmental education and awareness to the communities especially as they are the main waste generators



environmental affairs

Department:
Environmental Affairs
REPUBLIC OF SOUTH AFRICA



ENVIRONMENTAL PROTECTION &
INFRASTRUCTURE PROGRAMMES



EXPANDED PUBLIC WORKS PROGRAMME

Funding Qualification /Criteria

- An application form filled on the EPIP **online web-based system**.
- The project must fall within the **mandate of the department (EPIP Focus Areas)**.
- The project must be **endorsed by the municipality (council resolution or a letter signed by the MM for each project)**.
- The budget must be more than **R2.5 Million**.
- An application must not be submitted by an individual for his/her sole benefit i.e. no community involvement, beneficiation and ownership.
- The project must be **labour intensive** (main objective is not to solely purchase land or assets, training, development of plans)
- **Proof of land** dedicated for project implementation (where land is required)



environmental affairs

Department:
Environmental Affairs
REPUBLIC OF SOUTH AFRICA



ENVIRONMENTAL PROTECTION &
INFRASTRUCTURE PROGRAMMES



EXPANDED PUBLIC WORKS PROGRAMME

Process followed for soliciting projects

STAGE 1

SOURCING OF PROJECTS

- Provincial briefing sessions conducted
- Posting of advert in newspapers
- Submission of proposals by owning entities on the EPIP web-based projects management system (PMSII)

- 3-6 Months

STAGE 2

EVALUATION & APPROVAL OF PROJECT PROPOSALS

- Applications received
- Proposals verified
- Proposals evaluated per focus area (7 focus areas)
- Shortlisted projects recommended projects
- Approval of projects by the DG
- Letters issued to project proponents, Districts, Province
- Owning entity MoAs issued

- 3 – 6 Months

STAGE 3

PLANNING & IMPLEMENTATION OF PROJECTS

- Appointment of the IA
- IA Introduced to the OE
- IA gather information and populate online business plan
- Business plan evaluated and approved for implementation
- Project Advisory Committee and Technical Review Committee Established
- Project implementation
- Project hand over to OE

- 18 – 24 Months



environmental affairs

Department:
Environmental Affairs
REPUBLIC OF SOUTH AFRICA



ENVIRONMENTAL PROTECTION &
INFRASTRUCTURE PROGRAMMES



EXPANDED PUBLIC WORKS PROGRAMME

EPIP model



environmental affairs

Department:
Environmental Affairs
REPUBLIC OF SOUTH AFRICA



ENVIRONMENTAL PROTECTION &
INFRASTRUCTURE PROGRAMMES



EXPANDED PUBLIC WORKS PROGRAMME

EPIP implementation model

Planning Phase

Soliciting proposals from municipalities, branches, provincial counterparts, public entities, NPO's

- Approval of projects for funding by the DG
- Appointment of implementing agents
- Extensive stakeholder consultation (internal & external)
- Development & approval of project business plans for implementation
- Recruitment of Participants

Implementation Phase

- Establishment of Project Advisory Committees
- Physical implementation of project deliverables
- Implementation of training (non-accredited & accredited)
- Hand-over of project assets to owning entity



environmental affairs

Department:
Environmental Affairs
REPUBLIC OF SOUTH AFRICA



ENVIRONMENTAL PROTECTION &
INFRASTRUCTURE PROGRAMMES



EXPANDED PUBLIC WORKS PROGRAMME

CRITERIA FOR EPIP PROJECTS IMPLEMENTATION

The approved EPIP project Implementation criteria is as follows:

- Project Management Fees – On a sliding scale of 15% to 18%
- Wages – A minimum of 35%
- Non-accredited Training - A minimum of 2%
- 58% reserved for women,
- 65% reserved for youth between the ages of 16 and 35 years
- 90% reserved for local people
- 2% reserved for persons with disabilities
- 50% of SMMEs used must represent enterprises with at least 70% of equity owned by HDIs



environmental affairs
Department:
Environmental Affairs
REPUBLIC OF SOUTH AFRICA



ENVIRONMENTAL PROTECTION &
INFRASTRUCTURE PROGRAMMES



EXPANDED PUBLIC WORKS PROGRAMME

PLANNING PHASE

"It's not the plan that's important, it's the planning." Dr. Gramme Edwards

- The planning phase is characterized by extensive consultation with all key stakeholders of the project
- Implementer shall be advanced with the initial amount (30%- Project management fee) to ensure swift yet efficient planning (Commencement of planning)
- Project implementer shall be linked to the EPIP project management system (PMSII)
- Introduction of the appointed implementer to the owning entity by the Department
- Establishment of a Project Advisory Committee (PAC)



environmental affairs
Department:
Environmental Affairs
REPUBLIC OF SOUTH AFRICA



PLANNING PHASE (cont.)

- The BP and all supporting documentation must be presented to stakeholders prior submission DEA
- This phase culminates in the submission of a comprehensive business plan with all accompanying documents to DEA as listed in annexure B of the contract
- The planning documents (including online business plan) are allocated for evaluation



environmental affairs

Department:
Environmental Affairs
REPUBLIC OF SOUTH AFRICA



ENVIRONMENTAL PROTECTION &
INFRASTRUCTURE PROGRAMMES



EXPANDED PUBLIC WORKS PROGRAMME

TRANSITION TO IMPLEMENTATION

- **Recruitment of participants based on an approved recruitment strategy**
 - EPIP Recruitment Strategy
 - Public Works: EPWP Practice Note: No.1
- **Upon approval of the business plan, the implementer is issued with a copy to sign as an annexure to the contract**
- **On receipt of the signed business plan the project is advanced with a second payment for implementation (not more than 24% of project budget)**
- **Project moves to implementation**
- ***Unless otherwise stated in the BP, the implementation period of a project funded will not exceed a period of 24 months***



environmental affairs
Department:
Environmental Affairs
REPUBLIC OF SOUTH AFRICA



Monitoring and Evaluation

- Quality Audit are conducted on sampled projects
- Provincial Project Manager (PPM) continues with monitoring and evaluation
- Project Advisory Committee (PAC) meet on a two months basis
- Project Technical Committee meet on a continuous basis
- Deliverables completion certificates are signed and issued by the technical official together with implementer engineer
- Project completion report and /or certificate issued and the project is handed over to the owning entity (Municipality, NGO, NPO, ETC)



environmental affairs

Department:
Environmental Affairs
REPUBLIC OF SOUTH AFRICA



ENVIRONMENTAL PROTECTION &
INFRASTRUCTURE PROGRAMMES



EXPANDED PUBLIC WORKS PROGRAMME

Thank You



environmental affairs
Department:
Environmental Affairs
REPUBLIC OF SOUTH AFRICA



ENVIRONMENTAL PROTECTION &
INFRASTRUCTURE PROGRAMMES



EXPANDED PUBLIC WORKS PROGRAMME



QUESTIONS ??????



environmental affairs

Department:
Environmental Affairs
REPUBLIC OF SOUTH AFRICA



ENVIRONMENTAL PROTECTION &
INFRASTRUCTURE PROGRAMMES



EXPANDED PUBLIC WORKS PROGRAMME