

## CRITERIA FOR EPIP PROJECT FUNDING MODLE AND IMPLEMENTATION

WUP & IERM CONGRESS  
CAPE TOWN  
27/09/2016

MP GAVHI



**environmental affairs**

Department:  
Environmental Affairs  
REPUBLIC OF SOUTH AFRICA



ENVIRONMENTAL PROTECTION &  
INFRASTRUCTURE PROGRAMMES



EXPANDED PUBLIC WORKS PROGRAMME

# Outline

- Background of EPIP
- Programme Focus Areas
- Process for soliciting EPIP projects
- Criteria for EPIP projects
- Planning phase
- Implementation
- End



**environmental affairs**  
Department:  
Environmental Affairs  
REPUBLIC OF SOUTH AFRICA



ENVIRONMENTAL PROTECTION &  
INFRASTRUCTURE PROGRAMMES



EXPANDED PUBLIC WORKS PROGRAMME

# Departmental Mandate

The mandate of the Department is underpinned by the Constitution and all other relevant legislation and policies

## **Section 24 (b) of the Constitution:**

All South Africans have a Constitutional right to an environment that is not harmful to their health or well-being, and to have the environment protected, for the benefit of present and future generations



**environmental affairs**

Department:  
Environmental Affairs  
REPUBLIC OF SOUTH AFRICA



ENVIRONMENTAL PROTECTION &  
INFRASTRUCTURE PROGRAMMES

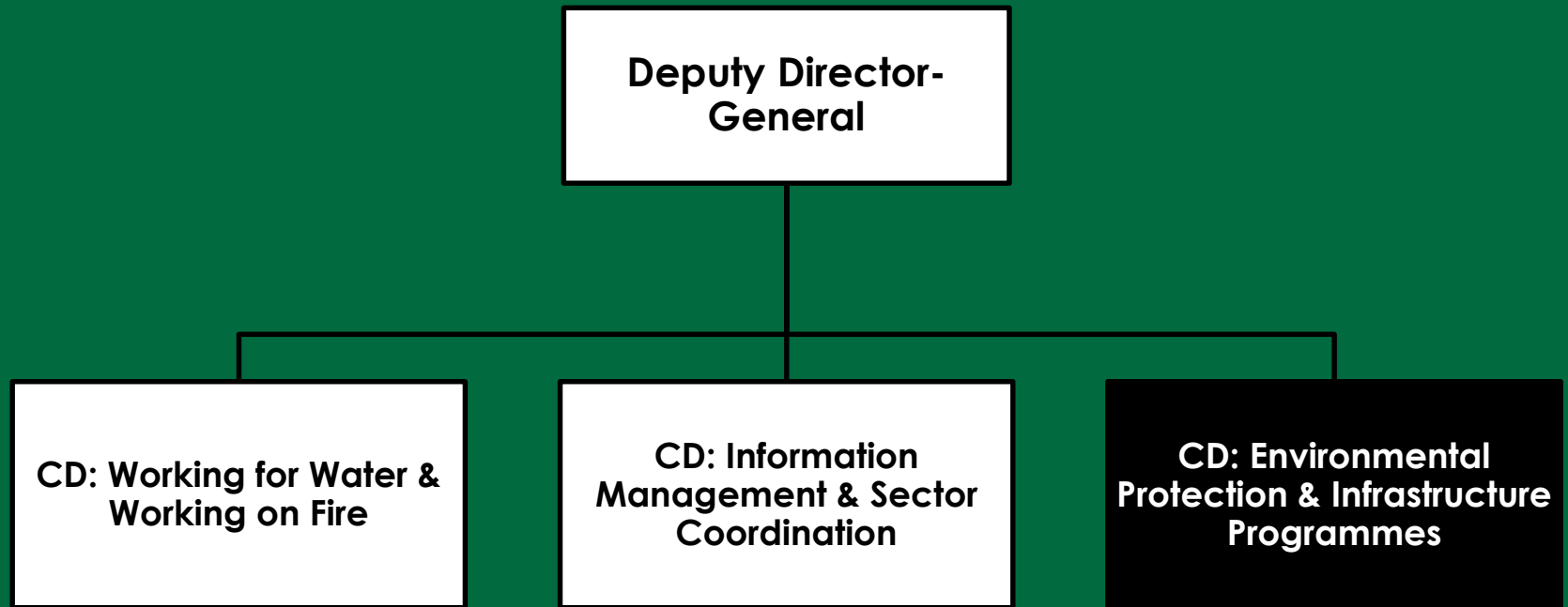


EXPANDED PUBLIC WORKS PROGRAMME

# DEA Organogram



# Environmental Programmes (EP) Branch



**environmental affairs**

Department:  
Environmental Affairs  
REPUBLIC OF SOUTH AFRICA



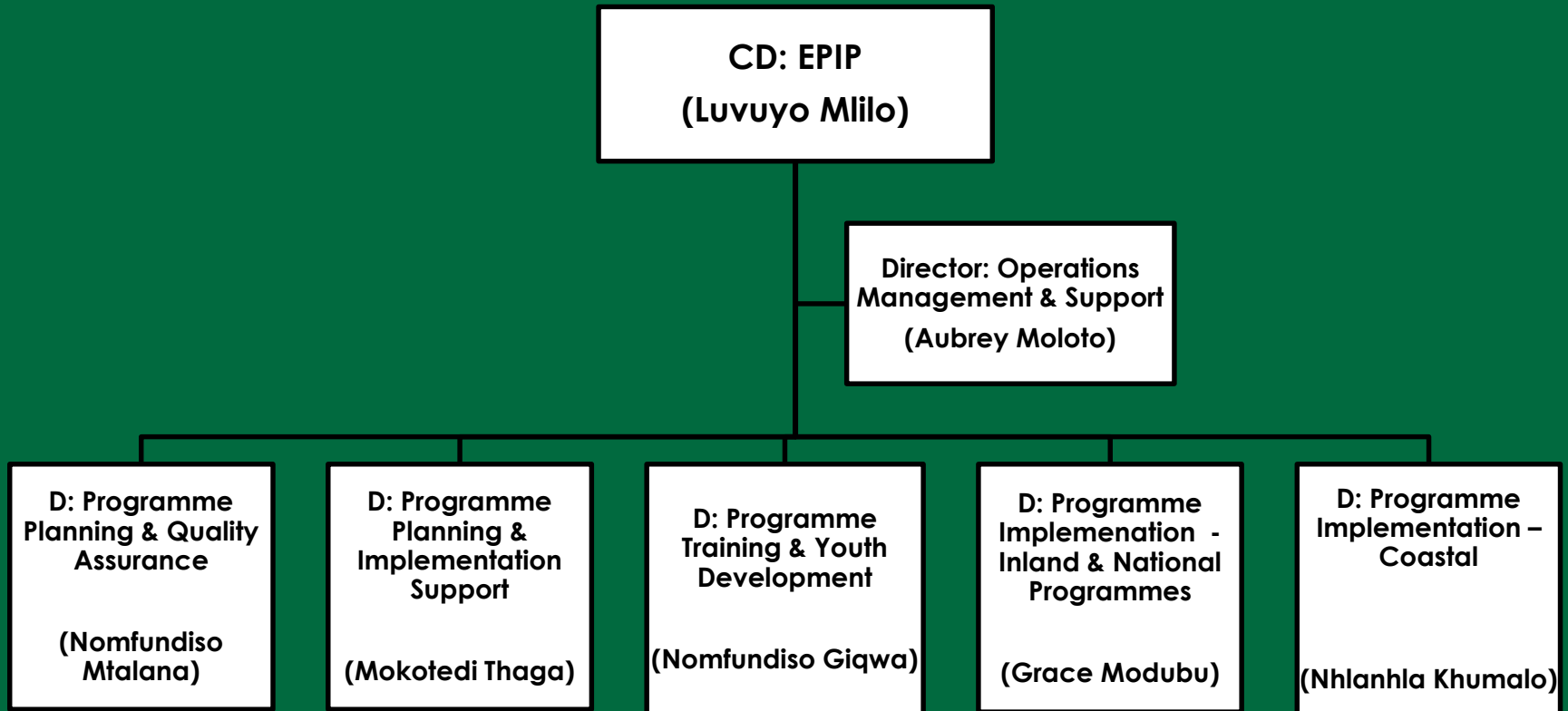
ENVIRONMENTAL PROTECTION &  
INFRASTRUCTURE PROGRAMMES



EXPANDED PUBLIC WORKS PROGRAMME



# EPIP Organogram



**environmental affairs**

Department:  
Environmental Affairs  
REPUBLIC OF SOUTH AFRICA



ENVIRONMENTAL PROTECTION &  
INFRASTRUCTURE PROGRAMMES



EXPANDED PUBLIC WORKS PROGRAMME

# Purpose & Goal of EPIP

## Purpose:

To manage the identification, planning and implementation of the Environmental Protection and Infrastructure Programmes throughout the country under the Expanded Public Works Programme using labour intensive methods targeting the unemployed, youth, women, people with disabilities and SMMEs

## Goal:

Poverty alleviation through a number of interventions



environmental affairs

Department:  
Environmental Affairs  
REPUBLIC OF SOUTH AFRICA



ENVIRONMENTAL PROTECTION &  
INFRASTRUCTURE PROGRAMMES



EXPANDED PUBLIC WORKS PROGRAMME

# Background

## EPIP Directorates

DIRECTORATE	PURPOSE	FUNCTIONS
1. Operations and Management Support	Provide management support in the operations of the Chief Directorate: EPIP	Manage projects business plan review and amendments.
2. Programme Planning and Quality Assurance	Identify and guide planning of projects and provide support to the implementation of the EPIP of DEA as well as the programme's policy development and review through research.	Undertake all engagements relating to the initiation of projects with all affected stakeholders including other spheres of government.
3. Programme Planning and Implementation Support	Offer technical financial and contract administration support in planning and implementation of EPIP within EP Branch.	Provide technical support to the planning and implementation of EPIP in a form of



# Background (cont.)

## EPIP Directorates

DIRECTORATE	PURPOSE	FUNCTIONS
4. Programme Training and Youth Development	Guide, coordinate and manage the planning and reporting of accredited, non-accredited training and the Youth Environmental Service projects within the EPIP.	Manage the process of planning and quality assurance for all training interventions for sub-programmes within EPIP.
5. Programme Implementation: Inland and National Programmes	Manage the implementation of all EPIP National programmes and projects within the Inland Provinces i.e. Gauteng; North-West; Mpumalanga; Limpopo; and Free State.	Manage the implementation of projects within the EPIP National programmes and projects across all the Inland provinces in line with approved business plans.
6. Programme Implementation: Coastal	Manage the implementation of all EPIP projects within the Coastal Provinces i.e. KwaZulu-Natal; Eastern Cape; Western Cape and Northern Cape.	Manage the implementation of projects within the EPIP across the Coastal provinces in line with

# Overall Objectives of EPIP

- Better environmental management practices
- Job creation
- SMME Development
- Skills Development

## Funding Criteria Highlight

- EPIP is an EPWP programme
- **Labour intensive projects – requirement of 35-45 % of budget for wages**



**environmental affairs**

Department:  
Environmental Affairs  
REPUBLIC OF SOUTH AFRICA



ENVIRONMENTAL PROTECTION &  
INFRASTRUCTURE PROGRAMMES



**EXPANDED PUBLIC WORKS PROGRAMME**

# (7) EPIP Focus Areas

- Working on Waste
- Greening & Open Space Management
- Working for Land
- People & Parks
- Wildlife Economy
- Working for the Coast
- Youth Environmental Service



**environmental affairs**

Department:  
Environmental Affairs  
REPUBLIC OF SOUTH AFRICA



ENVIRONMENTAL PROTECTION &  
INFRASTRUCTURE PROGRAMMES



EXPANDED PUBLIC WORKS PROGRAMME

# Working on Waste

## Strategic Objectives

- Create support mechanisms for the protection of environmental quality
- Create sustainable livelihoods through recycling of waste (waste collection & minimization)
- Support the use of environmentally friendly waste disposal technology
- Promote environmental education and awareness to the communities especially as they are the main waste generators



environmental affairs

Department:  
Environmental Affairs  
REPUBLIC OF SOUTH AFRICA



ENVIRONMENTAL PROTECTION &  
INFRASTRUCTURE PROGRAMMES



EXPANDED PUBLIC WORKS PROGRAMME

# Categories of WoW Projects

- Development of Landfill Sites
- Waste Transfer Stations
- Buy-back/Recycling Facilities
- Material Recovery facilities
- Composting facilities
- Street Cleaning
- Domestic Waste Collection
- Greenest Town Municipality Competition
- Integrated Waste Management Plans
- Youth Jobs in Waste



**environmental affairs**

Department:  
Environmental Affairs  
REPUBLIC OF SOUTH AFRICA



ENVIRONMENTAL PROTECTION &  
INFRASTRUCTURE PROGRAMMES



EXPANDED PUBLIC WORKS PROGRAMME



# Greening & Open Space Management

## Strategic Objectives

- Restoration, enhancing and rehabilitation of open spaces
- Maximize measures towards pollution mitigation
- Improve climate change adaptation through minimization of biodiversity loss
- Encourage use of greener technologies to mitigate against environmental degradation



**environmental affairs**

Department:  
Environmental Affairs  
REPUBLIC OF SOUTH AFRICA



ENVIRONMENTAL PROTECTION &  
INFRASTRUCTURE PROGRAMMES



EXPANDED PUBLIC WORKS PROGRAMME



# Categories of G&OSM Projects

- Development & Rehabilitation of Environmentally Friendly Recreational Parks
- Development of Nurseries
- Tree Planting
- Construction of Environmental Education Centres
- Alternative/Greener Technology Initiatives
- Development of management plans



**environmental affairs**  
Department:  
Environmental Affairs  
REPUBLIC OF SOUTH AFRICA



# Working for Land Focus Area



## Strategic Objectives

- To restore and rehabilitate degraded land
- To encourage biodiversity
- Curtailing of bush encroachment  
Mitigate Bush Encroachment
- Mitigate loss of top soil which will enhance ecological integrity of the ecosystem
- Encourage better land use practices
- Environmental education and awareness



**environmental affairs**

Department:  
Environmental Affairs  
REPUBLIC OF SOUTH AFRICA



ENVIRONMENTAL PROTECTION &  
INFRASTRUCTURE PROGRAMMES



EXPANDED PUBLIC WORKS PROGRAMME

# Categories of WfL Projects

- Land rehabilitation and restoration
- Curtailment of bush encroachment



**environmental affairs**

Department:  
Environmental Affairs  
REPUBLIC OF SOUTH AFRICA



ENVIRONMENTAL PROTECTION &  
INFRASTRUCTURE PROGRAMMES



EXPANDED PUBLIC WORKS PROGRAMME



# People & Parks Focus Area



## Strategic Objectives

- Biodiversity conserved, protected and threats mitigated.
- Fair access and equitable sharing of benefits from biological resource promoted.
- Biological resources sustainability utilized and regulated.
- Improved socio-economic benefits within the environmental sector.



**environmental affairs**

Department:  
Environmental Affairs  
REPUBLIC OF SOUTH AFRICA



ENVIRONMENTAL PROTECTION &  
INFRASTRUCTURE PROGRAMMES



EXPANDED PUBLIC WORKS PROGRAMME

# Categories of P&P Projects

- Conservation related projects
- Development and upgrading of infrastructure in and around protected areas
- Development of commercial assets for communities living around parks and protected areas
- Support to subsidiary industries and support the development of BEE/SMME initiatives complimentary to the protected areas



**environmental affairs**

Department:  
Environmental Affairs  
REPUBLIC OF SOUTH AFRICA



ENVIRONMENTAL PROTECTION &  
INFRASTRUCTURE PROGRAMMES



EXPANDED PUBLIC WORKS PROGRAMME

# Wildlife Economy Focus Area



## Strategic Objectives

- Fair access and equitable sharing of benefits arising from bio prospecting involving indigenous biological resources promoted
- Biological resources sustainability utilized and regulated.
- Improved socio-economic benefits within the environmental sector.



ENVIRONMENTAL PROTECTION &  
INFRASTRUCTURE PROGRAMMES



EXPANDED PUBLIC WORKS PROGRAMME



# Categories of WE Projects

- Game ranching and breeding facilities
- Hunting outfitters
- Venison processing
- Bio-trade and bio-prospecting
- Environmental Monitors



**environmental affairs**  
Department:  
Environmental Affairs  
REPUBLIC OF SOUTH AFRICA



ENVIRONMENTAL PROTECTION &  
INFRASTRUCTURE PROGRAMMES



EXPANDED PUBLIC WORKS PROGRAMME

# Working for the Coast Deliverables



**environmental affairs**

Department:  
Environmental Affairs  
REPUBLIC OF SOUTH AFRICA



ENVIRONMENTAL PROTECTION &  
INFRASTRUCTURE PROGRAMMES



**EXPANDED PUBLIC WORKS PROGRAMME**

# Rehabilitation of degraded areas



- Dune belt – where there are signs of trampling, erosion etc.
- Implementation of estuary management plans
- Erosion in catchments (dongas)



Department:  
Environmental Affairs  
REPUBLIC OF SOUTH AFRICA



ENVIRONMENTAL PROTECTION &  
INFRASTRUCTURE PROGRAMMES



EXPANDED PUBLIC WORKS PROGRAMME

# Funding Qualification Criteria

- An application form filled on the EPIP online web-based system.
- The project must fall within the mandate of the department (EPIP Focus Areas).
- The project must be endorsed by the municipality (council resolution or a letter signed by the MM for each project).
- The budget must be more than R2.5 Million.
- An application must not be submitted by an individual for his/her sole benefit i.e. no community involvement, beneficiation and ownership.
- The project must be labour intensive (main objective is not to solely purchase land or assets, training, development of plans)
- Proof of land dedicated for project implementation (where land is required)



**environmental affairs**

Department:  
Environmental Affairs  
REPUBLIC OF SOUTH AFRICA



ENVIRONMENTAL PROTECTION &  
INFRASTRUCTURE PROGRAMMES

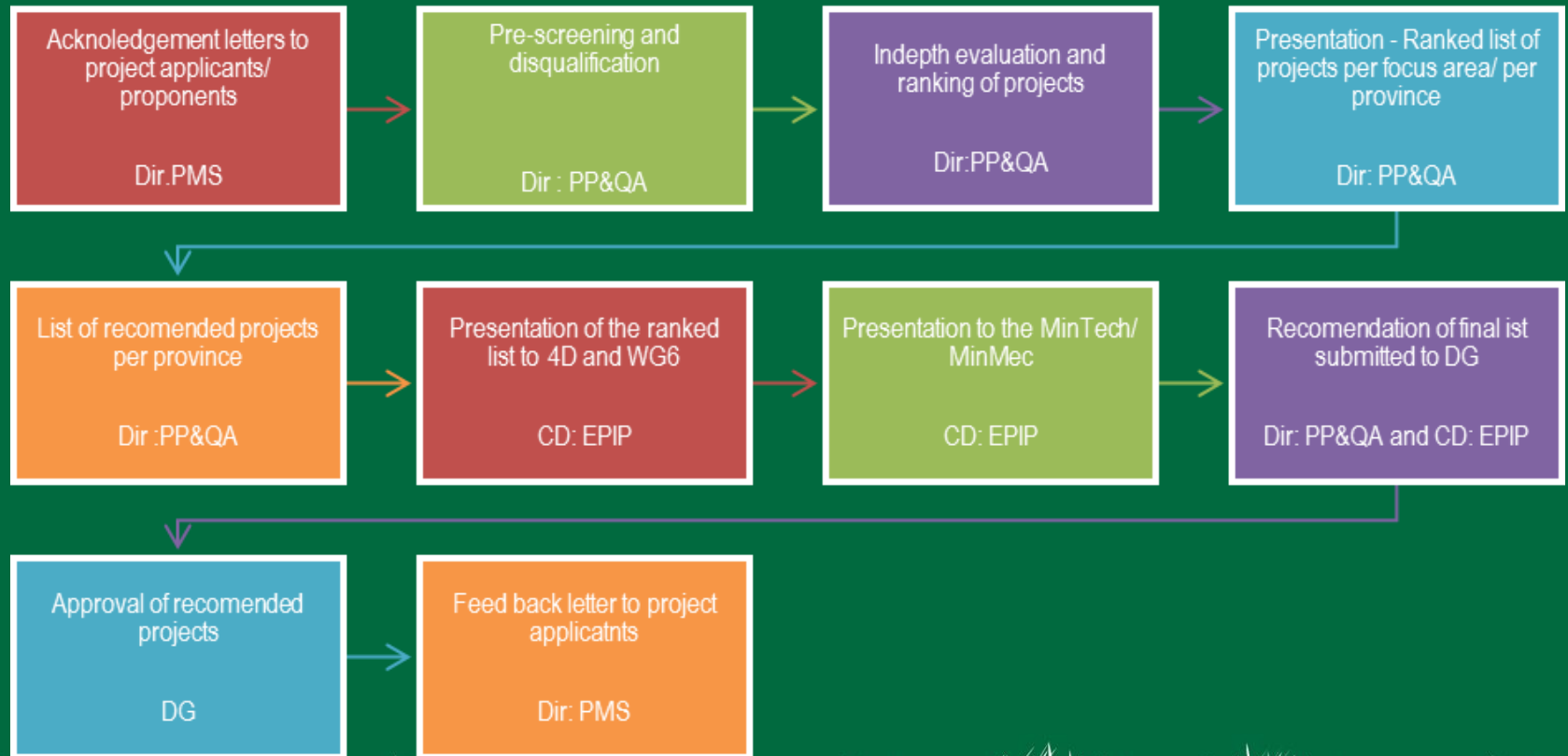


EXPANDED PUBLIC WORKS PROGRAMME



# Sourcing of projects for funding – solicitation, screening and evaluation (cont.)

## Application vetting process



# Process followed for soliciting projects

## STAGE 1

### SOURCING OF PROJECTS

- Provincial briefing sessions conducted
- Posting of advert in newspapers
- Submission of proposals by owning entities on the EPIP web-based projects

## STAGE 2

### EVALUATION & APPROVAL OF PROJECT PROPOSALS

- Applications received
- Proposals verified
- Proposals evaluated per focus area (5 focus areas)
- Shortlist of recommended projects
- Approval of projects by the DG
- Letters issued to project proponents, Districts, Province
- Owing entity MoAs issued

## STAGE 3

### PLANNING & IMPLEMENTATION OF PROJECTS

- Appointment of the IA
- IA Introduced to the OE
- IA gather information and populate online business plan
- Business plan evaluated and approved for implementation
- Project Advisory Committee and Technical Review Committee Established
- Project implementation
- Project hand over to OE



**environmental affairs**

Department:  
Environmental Affairs  
REPUBLIC OF SOUTH AFRICA



ENVIRONMENTAL PROTECTION &  
INFRASTRUCTURE PROGRAMMES



**EXPANDED PUBLIC WORKS PROGRAMME**



# EPIP Implementation model



**environmental affairs**  
Department:  
Environmental Affairs  
REPUBLIC OF SOUTH AFRICA



ENVIRONMENTAL PROTECTION &  
INFRASTRUCTURE PROGRAMMES



EXPANDED PUBLIC WORKS PROGRAMME

# EPIP implementation model

## Planning Phase

- Soliciting proposals from municipalities, branches, provincial counterparts, public entities, NPO's
- Approval of projects for funding by the DG
- Appointment of implementing agents
- Extensive stakeholder consultation (internal & external)
- Development & approval of project business plans for implementation
- Recruitment of Participants

## Implementation Phase

- Establishment of Project Advisory Committees
- Physical implementation of project deliverables
- Implementation of training (non-accredited & accredited)
- Hand-over of project assets to owning entity



**environmental affairs**

Department:  
Environmental Affairs  
REPUBLIC OF SOUTH AFRICA



ENVIRONMENTAL PROTECTION &  
INFRASTRUCTURE PROGRAMMES



EXPANDED PUBLIC WORKS PROGRAMME

# CRITERIA FOR EPIP PROJECTS

The approved EPIP project criteria is as follows:

- Project Management Fees – On a sliding scale of 15% to 18%
- Wages – A minimum of 35%
- Non-accredited Training - A minimum of 2%
- 58% reserved for women,
- 65% reserved for youth between the ages of 16 and 35 years
- 90% reserved for local people
- 2% reserved for persons with disabilities
- 50% of SMMEs used must represent enterprises with at least 70% of equity owned by HDIs



**environmental affairs**

Department:  
Environmental Affairs  
REPUBLIC OF SOUTH AFRICA



ENVIRONMENTAL PROTECTION &  
INFRASTRUCTURE PROGRAMMES



EXPANDED PUBLIC WORKS PROGRAMME

# PLANNING PHASE

*“A good plan culminates to a good product”*

- The planning phase is characterized by extensive consultation with all key stakeholders of the project
- Implementer shall be advanced with the initial amount to ensure swift yet efficient planning ( Commencement of planning)
- Project implementer shall be linked to the EPIP project management system
- Introduction of the appointed implementer to the owning entity by the Department



**environmental affairs**

Department:  
Environmental Affairs  
REPUBLIC OF SOUTH AFRICA



ENVIRONMENTAL PROTECTION &  
INFRASTRUCTURE PROGRAMMES



EXPANDED PUBLIC WORKS PROGRAMME

# PLANNING PHASE (cont.)

- The BP and all supporting documentation must be presented to stakeholders prior submission
- This phase culminates in the submission of a comprehensive business plan with all accompanying documents to DEA as listed in annexure B of the contract
- The planning documents ( including business plan) are allocated for evaluation



**environmental affairs**  
Department:  
Environmental Affairs  
REPUBLIC OF SOUTH AFRICA



ENVIRONMENTAL PROTECTION &  
INFRASTRUCTURE PROGRAMMES



EXPANDED PUBLIC WORKS PROGRAMME

# TRANSITION TO IMPLEMENTATION

- **Establishment of a Project Advisory Committee**
- **Recruitment of participants based on an approved recruitment strategy**
  - EPIP Recruitment Strategy
  - Public Works: EPWP Practice Note: No.001
- **Upon approval of the business plan, the implementer is issued with a copy to sign as an annexure to the contract**
- **On receipt of the signed business plan the project is advanced with a second payment for implementation**
- **Project moves to implementation**
- **Unless otherwise stated in the BP, the implementation period of a project funded will not exceed a period of 24 months**



**environmental affairs**

Department:  
Environmental Affairs  
REPUBLIC OF SOUTH AFRICA



ENVIRONMENTAL PROTECTION &  
INFRASTRUCTURE PROGRAMMES



**EXPANDED PUBLIC WORKS PROGRAMME**



# Monitoring and Evaluation

- Quality Audit are conducted on the sampled projects
- Provincial Project Manager (PPM) continues with monitoring and evaluation
- Project Advisory Committee (PAC) meet in a two months basis
- Project Technical Committee meet in a continues basis
- Deliverables completion certificates are signed and issued by the technical people
- Project completion report and /or certificate issued and the project is handed to the owning entity



**environmental affairs**

Department:  
Environmental Affairs  
REPUBLIC OF SOUTH AFRICA



ENVIRONMENTAL PROTECTION &  
INFRASTRUCTURE PROGRAMMES



EXPANDED PUBLIC WORKS PROGRAMME

# Thank You



**environmental affairs**  
Department:  
Environmental Affairs  
REPUBLIC OF SOUTH AFRICA



ENVIRONMENTAL PROTECTION &  
INFRASTRUCTURE PROGRAMMES



EXPANDED PUBLIC WORKS PROGRAMME



# QUESTIONS ??????



**environmental affairs**

Department:  
Environmental Affairs  
REPUBLIC OF SOUTH AFRICA



ENVIRONMENTAL PROTECTION &  
INFRASTRUCTURE PROGRAMMES



**EXPANDED PUBLIC WORKS PROGRAMME**