

# EPIP Projects Funding and Implementation Model

Mashudu Gavhi  
Date: 29/09/2015



**environmental affairs**

Department:  
Environmental Affairs  
REPUBLIC OF SOUTH AFRICA



ENVIRONMENTAL PROTECTION &  
INFRASTRUCTURE PROGRAMMES



EXPANDED PUBLIC WORKS PROGRAMME

# Outline

- Background of EPIP
- Programme Focus Areas
- Process for soliciting EPIP projects
- Criteria for EPIP projects
- Planning phase
- Problem Statement
- Transition to implementation



**environmental affairs**  
Department:  
Environmental Affairs  
REPUBLIC OF SOUTH AFRICA



ENVIRONMENTAL PROTECTION &  
INFRASTRUCTURE PROGRAMMES



EXPANDED PUBLIC WORKS PROGRAMME

# Departmental Mandate

The mandate of the Department is underpinned by the Constitution and all other relevant legislation and policies

## **Section 24 (b) of the Constitution:**

All South Africans have a Constitutional right to an environment that is not harmful to their health or well-being, and to have the environment protected, for the benefit of present and future generations



**environmental affairs**

Department:  
Environmental Affairs  
REPUBLIC OF SOUTH AFRICA

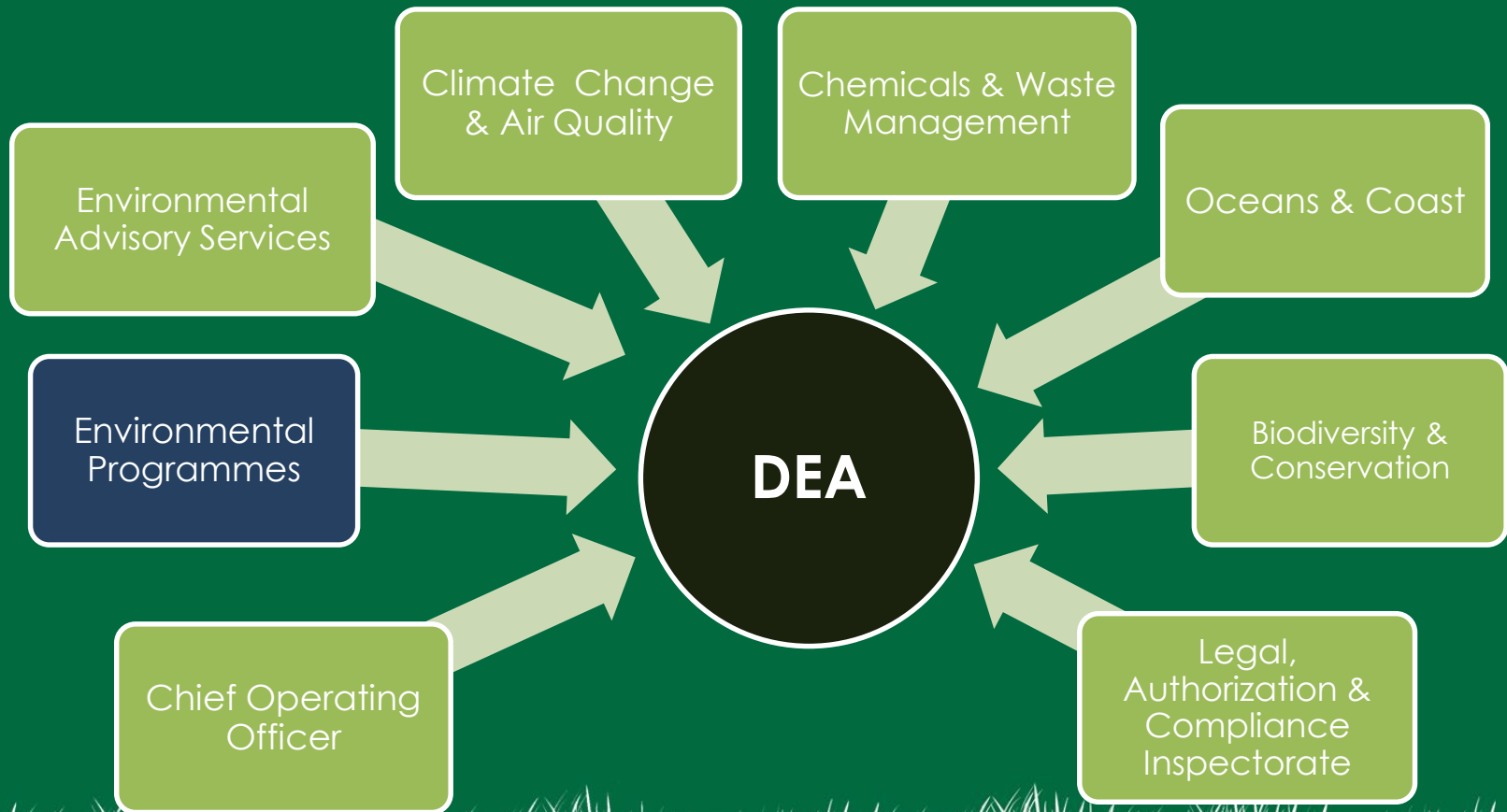


ENVIRONMENTAL PROTECTION &  
INFRASTRUCTURE PROGRAMMES



EXPANDED PUBLIC WORKS PROGRAMME

# DEA Organogram



**environmental affairs**

Department:  
Environmental Affairs  
REPUBLIC OF SOUTH AFRICA

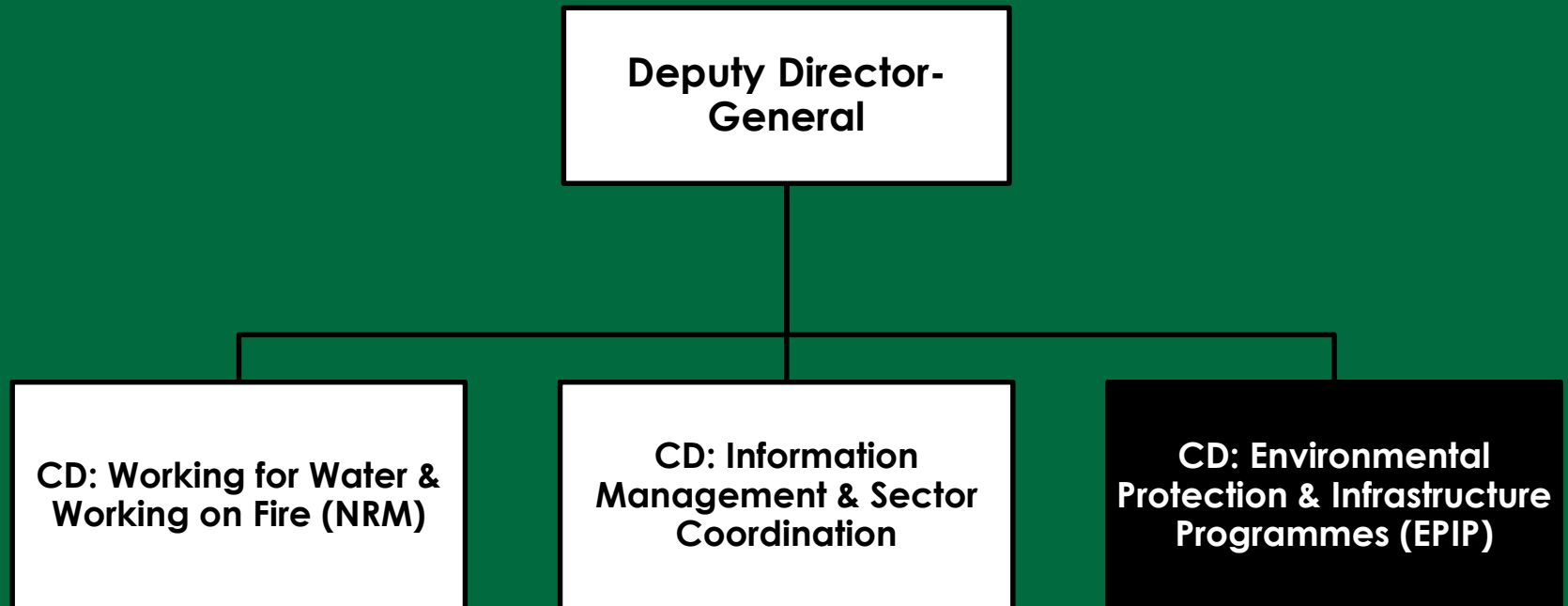


ENVIRONMENTAL PROTECTION &  
INFRASTRUCTURE PROGRAMMES



EXPANDED PUBLIC WORKS PROGRAMME

# Environmental Programmes (EP) Branch



**environmental affairs**

Department:  
Environmental Affairs  
REPUBLIC OF SOUTH AFRICA



ENVIRONMENTAL PROTECTION &  
INFRASTRUCTURE PROGRAMMES



EXPANDED PUBLIC WORKS PROGRAMME



# EPIP



**environmental affairs**

Department:  
Environmental Affairs  
REPUBLIC OF SOUTH AFRICA

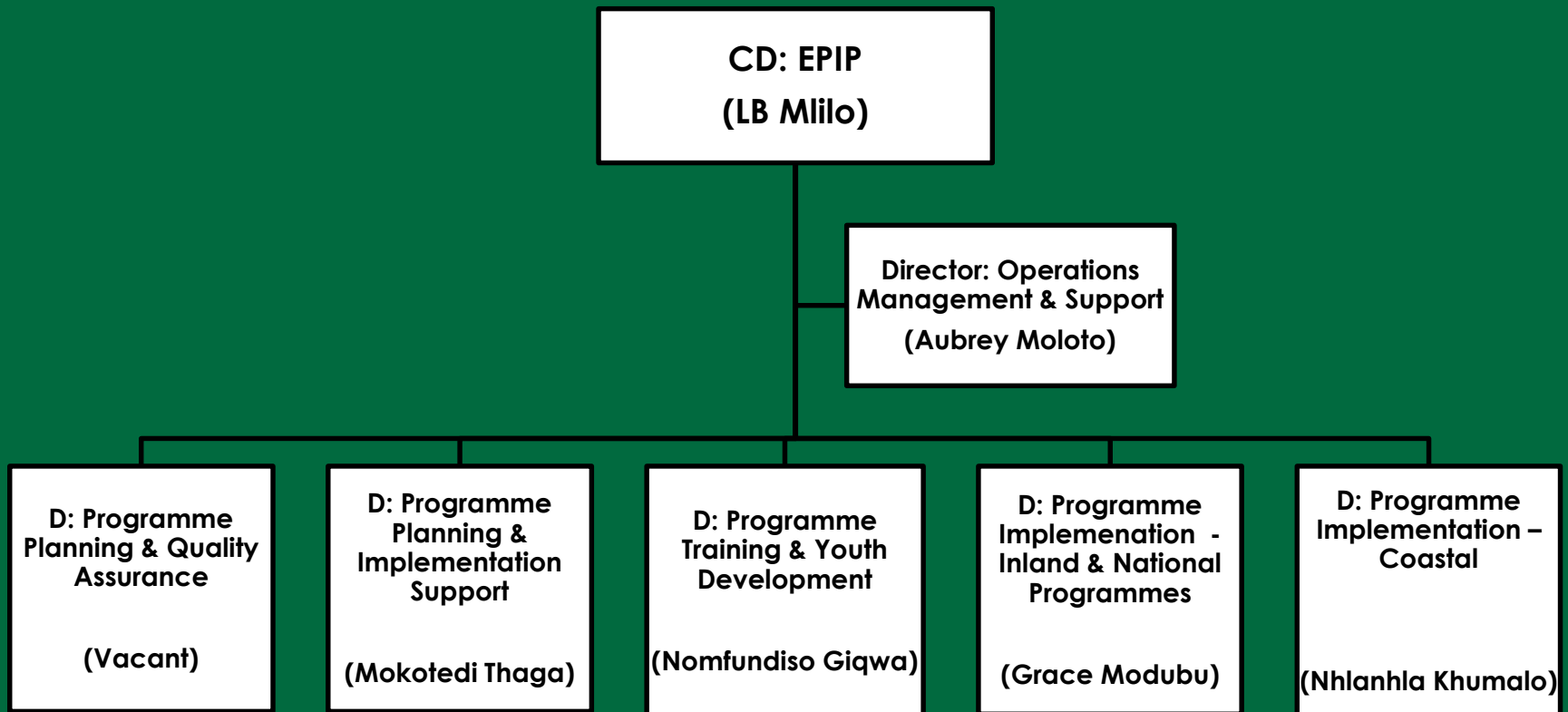


ENVIRONMENTAL PROTECTION &  
INFRASTRUCTURE PROGRAMMES



**EXPANDED PUBLIC WORKS PROGRAMME**

# EPIP Organogram



**environmental affairs**

Department:  
Environmental Affairs  
REPUBLIC OF SOUTH AFRICA



ENVIRONMENTAL PROTECTION &  
INFRASTRUCTURE PROGRAMMES



EXPANDED PUBLIC WORKS PROGRAMME

# Purpose & Goal of EPIP

## Purpose:

To manage the *identification*, *planning* and *implementation* of the Environmental Protection and Infrastructure Programmes throughout the country under the Expanded Public Works Programme using labour intensive methods targeting the *unemployed*, *youth*, *women*, *people with disabilities* and *SMMEs*

## Goal:

Poverty alleviation through a number of interventions



environmental affairs

Department:  
Environmental Affairs  
REPUBLIC OF SOUTH AFRICA



ENVIRONMENTAL PROTECTION &  
INFRASTRUCTURE PROGRAMMES



EXPANDED PUBLIC WORKS PROGRAMME



# Overall Objectives of EPIP

- Better environmental management practices
- Job creation
- SMME Development
- Skills Development

## Funding Criteria Highlight

- EPIP is an EPWP programme
- **Labour intensive projects – requirement of 35-45 % of budget for wages (Treasury wants 60 %)**



**environmental affairs**

Department:  
Environmental Affairs  
REPUBLIC OF SOUTH AFRICA



ENVIRONMENTAL PROTECTION &  
INFRASTRUCTURE PROGRAMMES



EXPANDED PUBLIC WORKS PROGRAMME

# EPIP Focus Areas

- Working on Waste
- Greening & Open Space Management
- Working for Land
- People & Parks
- Wildlife Economy
- Working for the Coast
- Youth Environmental Service
- Greenest Municipality Competition



**environmental affairs**  
Department:  
Environmental Affairs  
REPUBLIC OF SOUTH AFRICA



ENVIRONMENTAL PROTECTION &  
INFRASTRUCTURE PROGRAMMES



EXPANDED PUBLIC WORKS PROGRAMME

# Working on Waste

## Strategic Objectives

- Create and support mechanisms and for the protection of environmental quality
- Create sustainable livelihoods through recycling of waste (waste collection & minimization)
- Support the use of environmentally friendly waste disposal technology
- Promote environmental education and awareness to the communities especially as they are the main waste generators



**environmental affairs**  
Department:  
Environmental Affairs  
REPUBLIC OF SOUTH AFRICA



ENVIRONMENTAL PROTECTION &  
INFRASTRUCTURE PROGRAMMES



EXPANDED PUBLIC WORKS PROGRAMME

# Categories of WoW Projects

- Development of Landfill Sites
- Waste Transfer Stations
- Buy-back/Recycling Facilities
- Material Recovery facilities
- Composting facilities
- Street Cleaning
- Domestic Waste Collection
- Greenest Town Municipality Competition
- Integrated Waste Management Plans
- Youth Jobs in Waste



**environmental affairs**

Department:  
Environmental Affairs  
REPUBLIC OF SOUTH AFRICA



ENVIRONMENTAL PROTECTION &  
INFRASTRUCTURE PROGRAMMES



**EXPANDED PUBLIC WORKS PROGRAMME**



# Greening & Open Space Management

## Strategic Objectives

- Restoration, enhancing and rehabilitation of open spaces
- Maximize measures towards pollution mitigation
- Improve climate change adaptation through minimization of biodiversity loss
- Encourage use of greener technologies to mitigate against environmental degradation



**environmental affairs**  
Department:  
Environmental Affairs  
REPUBLIC OF SOUTH AFRICA



ENVIRONMENTAL PROTECTION &  
INFRASTRUCTURE PROGRAMMES



EXPANDED PUBLIC WORKS PROGRAMME

# Categories of G&OSM Projects

- Development & Rehabilitation of Environmentally Friendly Recreational Parks
- Development of Nurseries
- Tree Planting/Greening
- Construction of Environmental Education Centres
- Alternative/Greener Technology Initiatives



**environmental affairs**

Department:  
Environmental Affairs  
REPUBLIC OF SOUTH AFRICA



ENVIRONMENTAL PROTECTION &  
INFRASTRUCTURE PROGRAMMES



EXPANDED PUBLIC WORKS PROGRAMME



# Working for Land Focus Area



## Strategic Objectives

- To restore and rehabilitate degraded land
- To encourage biodiversity
- Curtailing of bush encroachment  
Mitigate Bush Encroachment
- Mitigate loss of top soil which will enhance ecological integrity of the ecosystem
- Encourage better land use practices
- Environmental education and awareness



**environmental affairs**

Department:  
Environmental Affairs  
REPUBLIC OF SOUTH AFRICA



ENVIRONMENTAL PROTECTION &  
INFRASTRUCTURE PROGRAMMES



EXPANDED PUBLIC WORKS PROGRAMME

# Categories of WfL Projects

- Land rehabilitation and restoration
- Curtailment of bush encroachment



**environmental affairs**  
Department:  
Environmental Affairs  
REPUBLIC OF SOUTH AFRICA



ENVIRONMENTAL PROTECTION &  
INFRASTRUCTURE PROGRAMMES



EXPANDED PUBLIC WORKS PROGRAMME

# People & Parks Focus Area



## Strategic Objectives

- Biodiversity conserved, protected and threats mitigated.
- Fair access and equitable sharing of benefits from biological resource promoted.
- Biological resources sustainability utilized and regulated.
- Improved socio-economic benefits within the environmental sector.



**environmental affairs**

Department:  
Environmental Affairs  
REPUBLIC OF SOUTH AFRICA



ENVIRONMENTAL PROTECTION &  
INFRASTRUCTURE PROGRAMMES



EXPANDED PUBLIC WORKS PROGRAMME



# Categories of P&P Projects

- Conservation related projects
- Development and upgrading of infrastructure in and around protected areas
- Development of commercial assets for communities living around parks and protected areas
- Support to ancillary industries and BEE/SMME development initiatives complimentary to the protected areas



**environmental affairs**

Department:  
Environmental Affairs  
REPUBLIC OF SOUTH AFRICA



ENVIRONMENTAL PROTECTION &  
INFRASTRUCTURE PROGRAMMES



EXPANDED PUBLIC WORKS PROGRAMME

# Wildlife Economy Focus Area



## Strategic Objectives

- Fair access and equitable sharing of benefits arising from bio prospecting involving indigenous biological resources promoted
- Biological resources sustainability utilized and regulated.
- Improved socio-economic benefits within the environmental sector.



**environmental affairs**

Department:  
Environmental Affairs  
REPUBLIC OF SOUTH AFRICA



ENVIRONMENTAL PROTECTION &  
INFRASTRUCTURE PROGRAMMES



EXPANDED PUBLIC WORKS PROGRAMME

# Categories of WE Projects

- Game ranching and breeding facilities
- Hunting outfitters
- Venison processing
- Bio-trade and bio-prospecting
- Environmental Monitors



**environmental affairs**  
Department:  
Environmental Affairs  
REPUBLIC OF SOUTH AFRICA



ENVIRONMENTAL PROTECTION &  
INFRASTRUCTURE PROGRAMMES



EXPANDED PUBLIC WORKS PROGRAMME



# EPIP Implementation model



**environmental affairs**  
Department:  
Environmental Affairs  
REPUBLIC OF SOUTH AFRICA

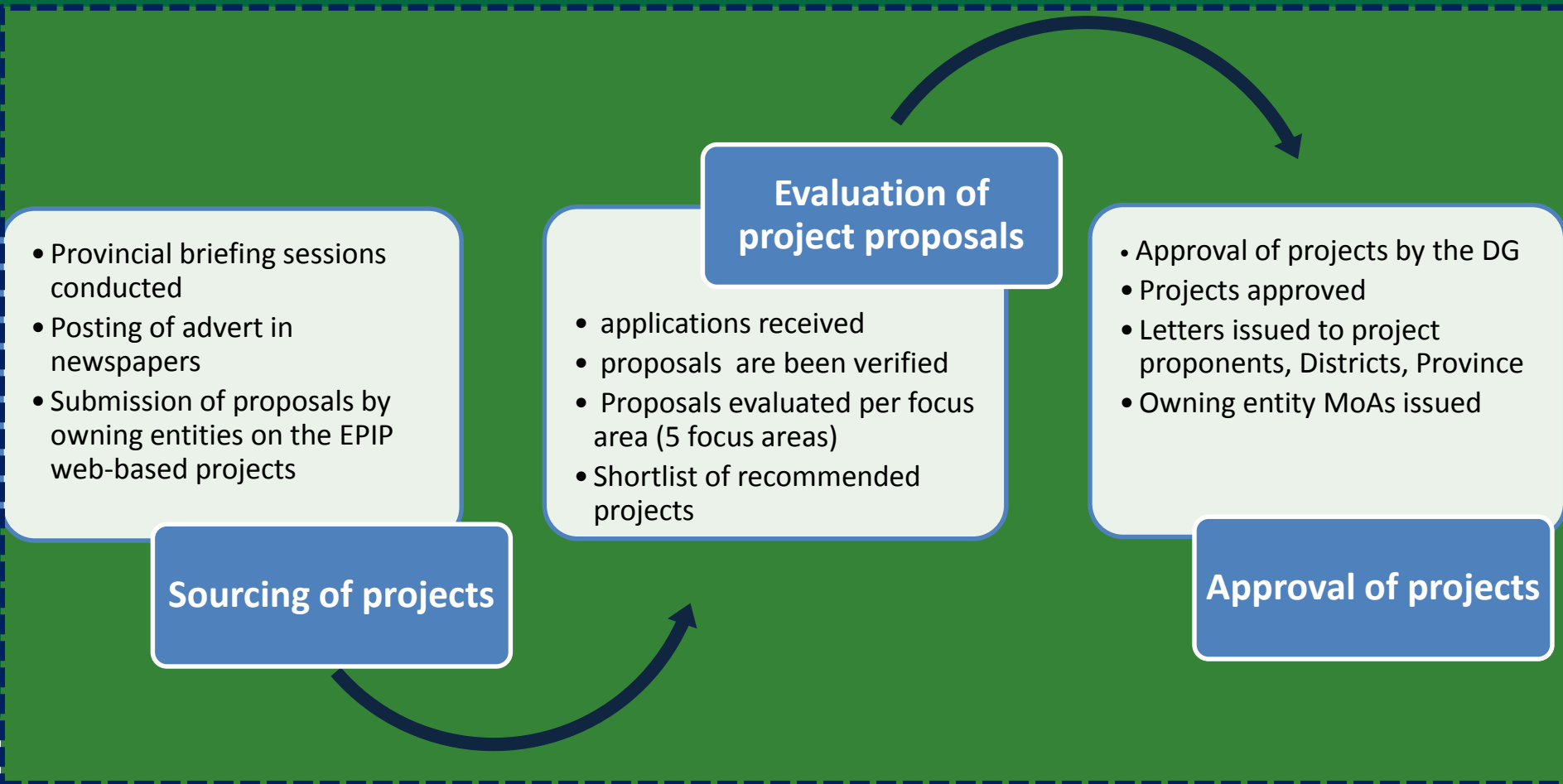


ENVIRONMENTAL PROTECTION &  
INFRASTRUCTURE PROGRAMMES



EXPANDED PUBLIC WORKS PROGRAMME

# Process followed for soliciting projects



**environmental affairs**

Department:  
Environmental Affairs  
REPUBLIC OF SOUTH AFRICA



ENVIRONMENTAL PROTECTION &  
INFRASTRUCTURE PROGRAMMES



EXPANDED PUBLIC WORKS PROGRAMME

# Funding Qualification Criteria

- An application form filled on the EPIP online web-based system.
- The project must fall within the mandate of the department (EPIP Focus Areas).
- The project must be endorsed by the municipality (council resolution or a letter signed by the MM for each project). Copy of IDP
- The budget must be more than R2.5 Million.
- An application must not be submitted by an individual for his/her sole benefit i.e. no community involvement, beneficiation and ownership.
- The project must be labour intensive (main objective is not to solely purchase land or assets, training, development of plans)
- Proof of land dedicated for project implementation (where land is required)



**environmental affairs**

Department:  
Environmental Affairs  
REPUBLIC OF SOUTH AFRICA



ENVIRONMENTAL PROTECTION &  
INFRASTRUCTURE PROGRAMMES



EXPANDED PUBLIC WORKS PROGRAMME

# EPIP implementation model

## Planning Phase

- Soliciting proposals from municipalities, branches, provincial counterparts, public entities, NPO's
- Approval of projects for funding by the DG
- Appointment of implementing agents
- Extensive stakeholder consultation (internal & external)
- Development & approval of project business plans for implementation

## Implementation Phase

- Establishment of Project Advisory Committees
- Recruitment of beneficiaries
- Physical implementation of project deliverables
- Implementation of training (non-accredited & accredited)
- Hand-over of project assets to owning entity



**environmental affairs**

Department:  
Environmental Affairs  
REPUBLIC OF SOUTH AFRICA



ENVIRONMENTAL PROTECTION &  
INFRASTRUCTURE PROGRAMMES



EXPANDED PUBLIC WORKS PROGRAMME

# CRITERIA FOR EPIP PROJECTS

The approved EPIP project criteria is as follows:

- **Project Management Fees – On a sliding scale of 15% to 18% catering for, but not limited to the following:**
  - Administration and reporting
  - Any professional services during planning and implementation of the project
  - Implementation fees etc.
- **Wages – A minimum of 35% of the project budget must be utilized for wages as referred to in the Memorandum of Agreement**
- **Training - A minimum of 2% of the total Project budget shall be utilized for non-accredited training by the Implementer**



**environmental affairs**

Department:  
Environmental Affairs  
REPUBLIC OF SOUTH AFRICA



ENVIRONMENTAL PROTECTION &  
INFRASTRUCTURE PROGRAMMES



EXPANDED PUBLIC WORKS PROGRAMME

# CRITERIA FOR EPIP PROJECTS (CONT.)

- 55% of temporary job days must be reserved for women, 65% for youth between the ages of 16 and 35 years
- 90% of temporary job days must be reserved for local people
  - ✓ EPIP Recruitment strategy
  - ✓ EPWP: Practice note 001 of 2013
- 2% of temporary job days must be reserved for persons with disabilities
- 50% of SMMEs used must represent enterprises with at least 70% of equity owned by HDIs (Historically Disadvantaged Individuals)



**environmental affairs**  
Department:  
Environmental Affairs  
REPUBLIC OF SOUTH AFRICA





# PLANNING PHASE

*“A good plan culminates to a good product”*

- The planning phase is characterized by extensive consultation with all key stakeholders of the project
- Implementer shall be advanced with the initial amount to ensure swift yet efficient planning ( Commencement of planning)
- Project implementer shall be linked to the EPIP project management system
- Introduction of the appointed implementer to the owning entity by the Department



**environmental affairs**

Department:  
Environmental Affairs  
REPUBLIC OF SOUTH AFRICA



ENVIRONMENTAL PROTECTION &  
INFRASTRUCTURE PROGRAMMES



EXPANDED PUBLIC WORKS PROGRAMME

# PLANNING PHASE (cont.)

- The BP and all supporting documentation must be presented to stakeholders prior submission and a letter to confirm such shall be presented to the Department as part of the supporting documents
- This phase culminates in the submission of a comprehensive business plan with all accompanying documents to DEA as listed in annexure B of the contract
  - Confirmation of land
  - Letters (support and ratification / endorsement of project deliverables)
  - After care documentation
  - IDP inclusion with the council approval /resolution
  - PIP and Detailed costing (Bill of Quantities)
  - Approved detailed working drawings (signed by authorities)
- The planning documents ( including business plan) are allocated for evaluation



**environmental affairs**  
Department:  
Environmental Affairs  
REPUBLIC OF SOUTH AFRICA



# PLANNING PHASE: TRANSITION TO IMPLEMENTATION

- Establishment of a Project Advisory Committee
- Recruitment of beneficiaries based on an approved recruitment strategy
  - EPIP Recruitment Strategy
  - Public Works: EPWP Practice Note: No.001
- Upon approval of the business plan, the implementer is issued with a copy to sign as an annexure to the contract
- On receipt of the signed business plan the project is advanced with a second payment for implementation
- Project moves to implementation
- Unless otherwise stated in the BP, the implementation period of a project funded will not exceed a period of 24 months



**environmental affairs**  
Department:  
Environmental Affairs  
REPUBLIC OF SOUTH AFRICA



# CHALLENGES

- Compliance Documents
- Site / land
- Municipality processes
- Municipality Staff turnover
- Political instability



**environmental affairs**  
Department:  
Environmental Affairs  
REPUBLIC OF SOUTH AFRICA



# Thank You



**environmental affairs**  
Department:  
Environmental Affairs  
REPUBLIC OF SOUTH AFRICA



ENVIRONMENTAL PROTECTION &  
INFRASTRUCTURE PROGRAMMES



EXPANDED PUBLIC WORKS PROGRAMME