

# **21 YEARS OF DEMOCRACY AND OF PARK AND RECREATION DEVELOPMENT**

by

**JOHAN BARNARD**

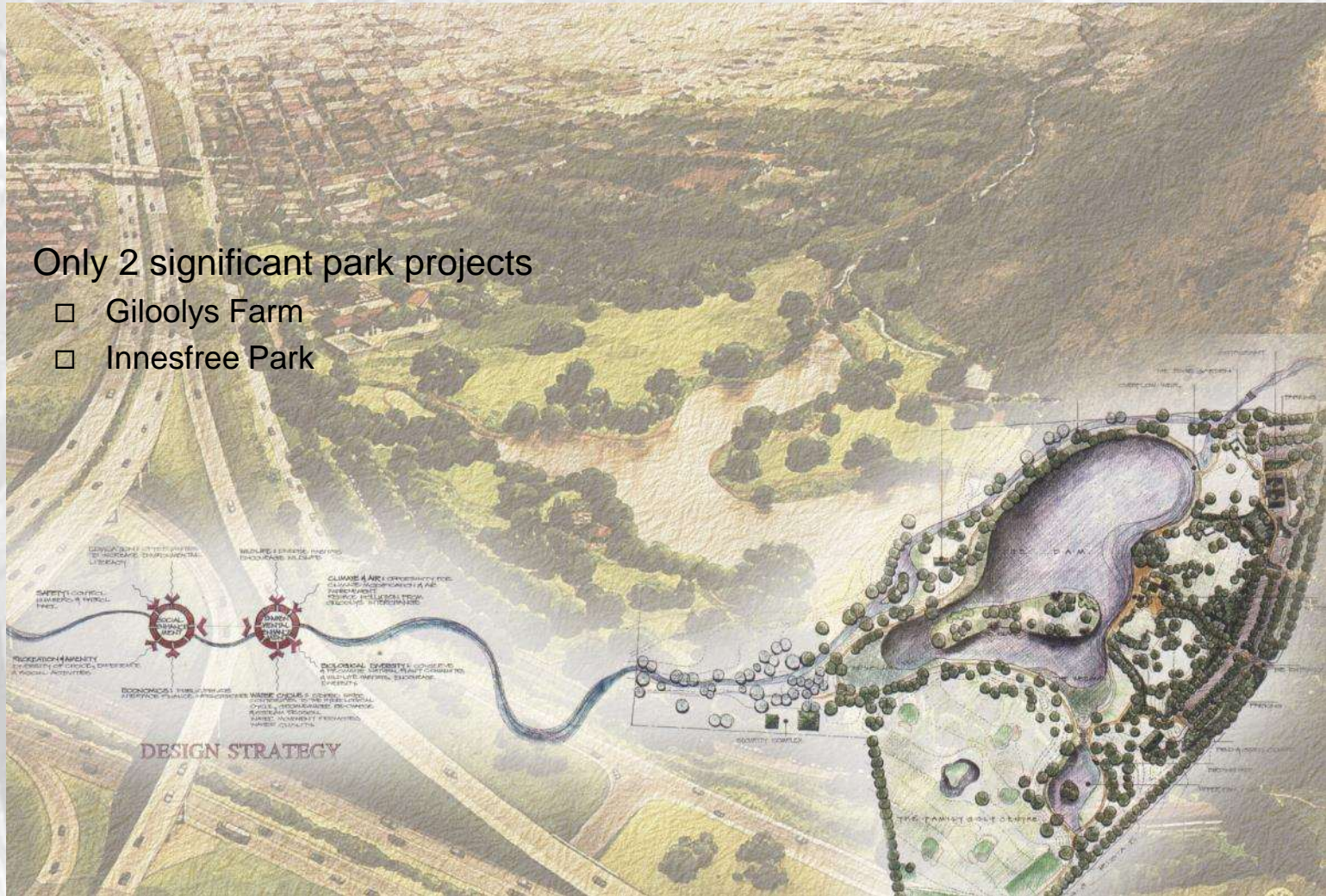
IERM Convention 2015

28 September 2015



- Only 2 significant park projects

- Giloolys Farm
- Innesfree Park

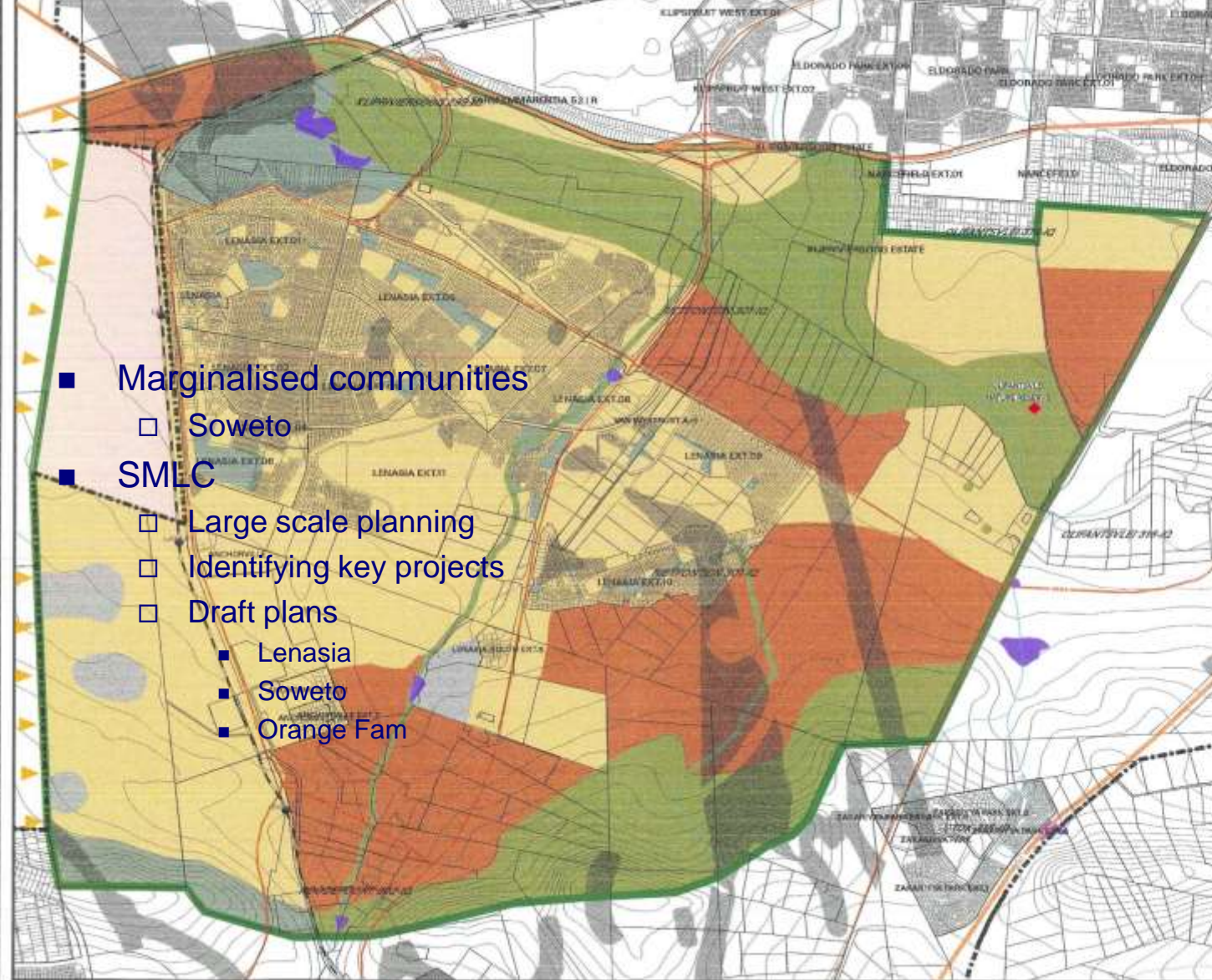






**EARLY DAYS: Focus on CBD**





**LEGEND**

- Proposed National Roads
- Existing National Roads
- Major Roads
- Railway Lines
- 10m Contours
- Rivers
- Study Area
- SMLC Boundary
- Dam
- Urban Development
- Recreation
- Conservation
- Existing Quarry Land
- Agriculture
- Military
- High Risk Delineate Areas
- Conservation Area
- Regulated Urban Edge

**Figure 10: Optimal Land Use**

**Lenasia Development Framework**

**Geographic Information Systems**

**Scale 1:50,000**

**N**

**5.1.5**

**Geographic Information Systems**

- Marginalised communities
  - Soweto
- SMLC
  - Large scale planning
  - Identifying key projects
  - Draft plans
    - Lenasia
    - Soweto
    - Orange Farm





**FIGURE 4**  
**KLIPSPRUIT**

Klipspruit Open Space Framework





# MOROKA DAM & THOKOZA PARK - SOWETO



Newtown Landscape Architects  
[www.newla.co.za](http://www.newla.co.za)



Moroka Dam Precinct





Moroka Dam Precinct





Moroka Dam Precinct







[illegible]

# Mapetla Wetland Park





Mapetla Wetland Park





Mapetla Wetland Park Phase 3





Wilgeheuwel Extreme Park Makeover





Wilgeheuwel Extreme Park Makeover





**Wilgeheuwel Extreme Park Makeover**





the origin of the Jukskei river &  
the host of large moving crowds.

**Stadium Square**







Ellis Park Sports Precinct







more than  
650 trees  
planted in  
GEPD







End Street Park







**Bertrams School Park**





Maurice Freeman Park

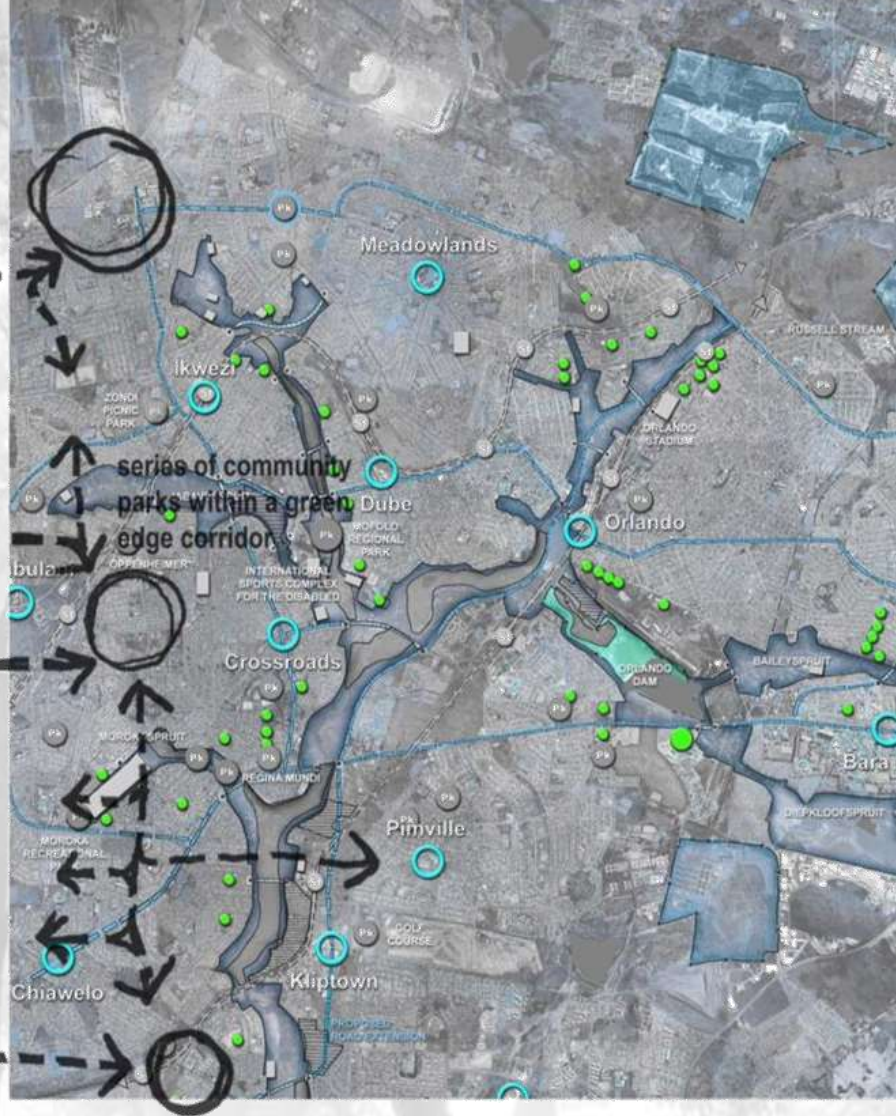






Fuller Park

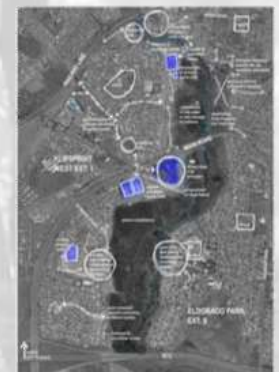




ubuntu kraai regional park



dhlamini kiptown regional park



klipspruit west regional park



# KLIPSPRUIT KLIPRIVER FRAMEWORK





**Dhlamini Eco Park Masterplan**





Dhlamini Eco Park





Dhlabini Eco Park





Dhlamini Eco Park



# 03C. Framework Plan

The Consolidated Framework, reflecting the overall intent of the Strategic Area Framework, is illustrated below:

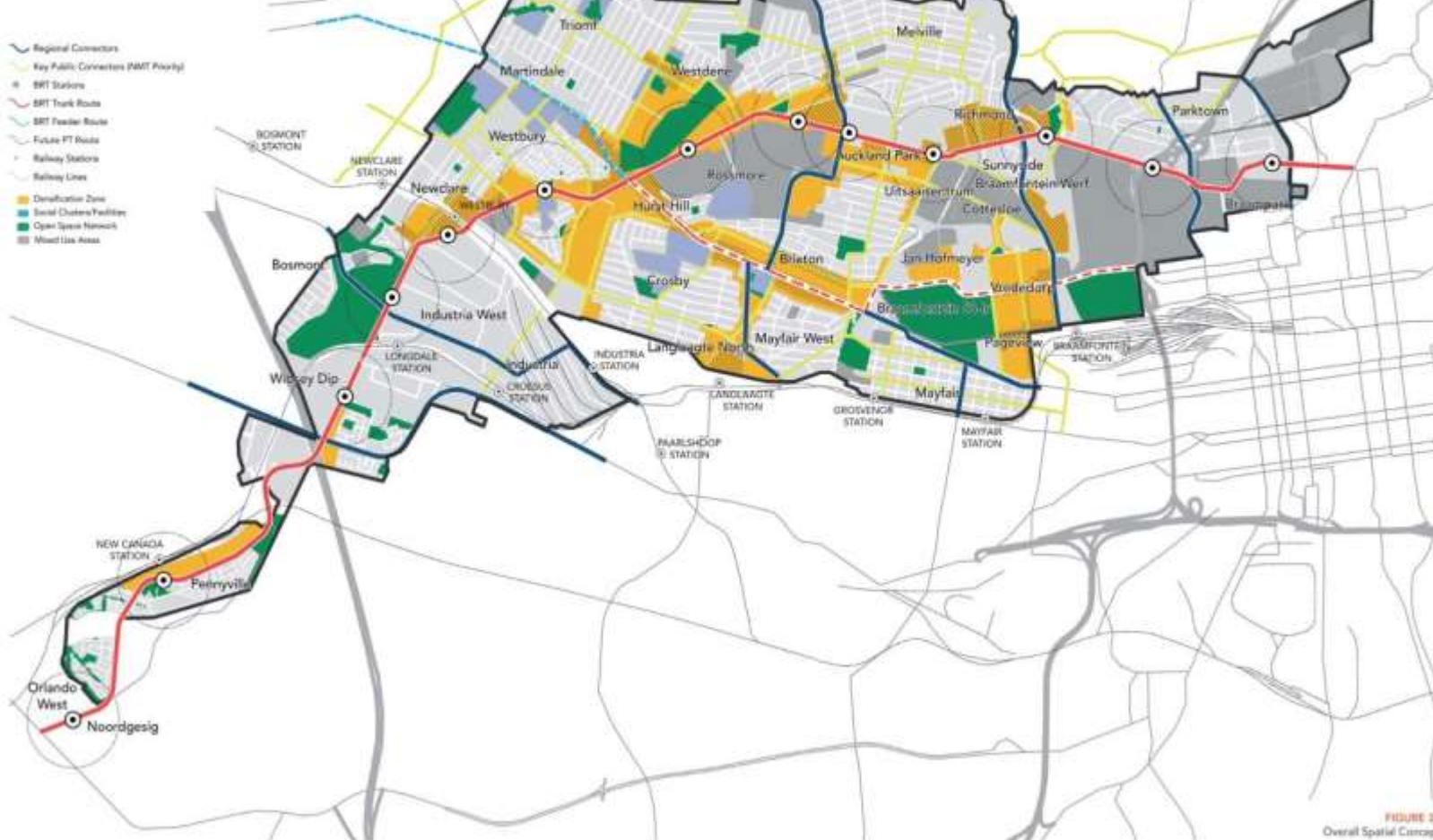


FIGURE 26  
Overall Spatial Concept





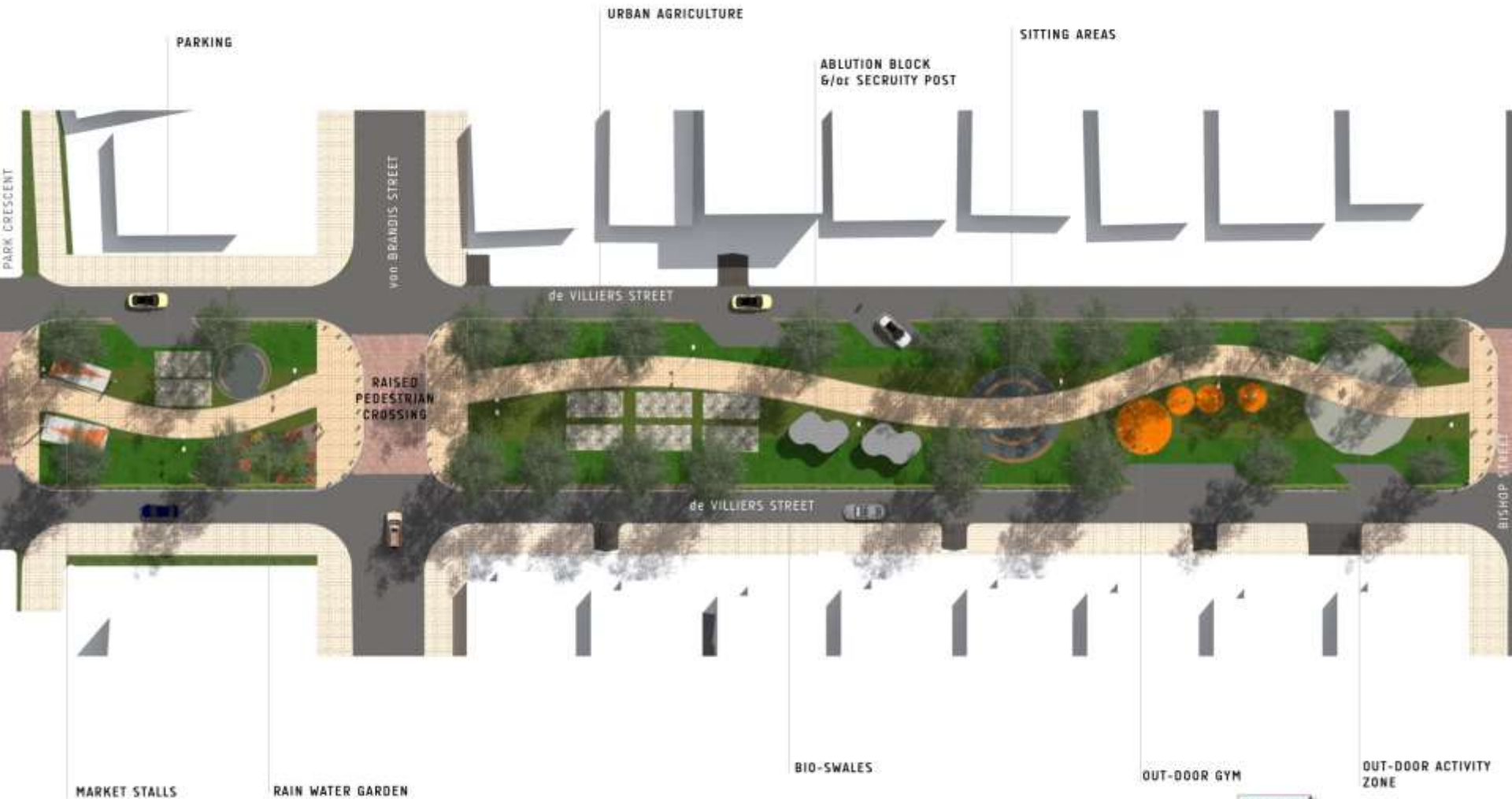
## Aucklandpark Corridor: Westdene Green Framework





Wetsdene Dam Design Sections









Turffontein De Villers street park

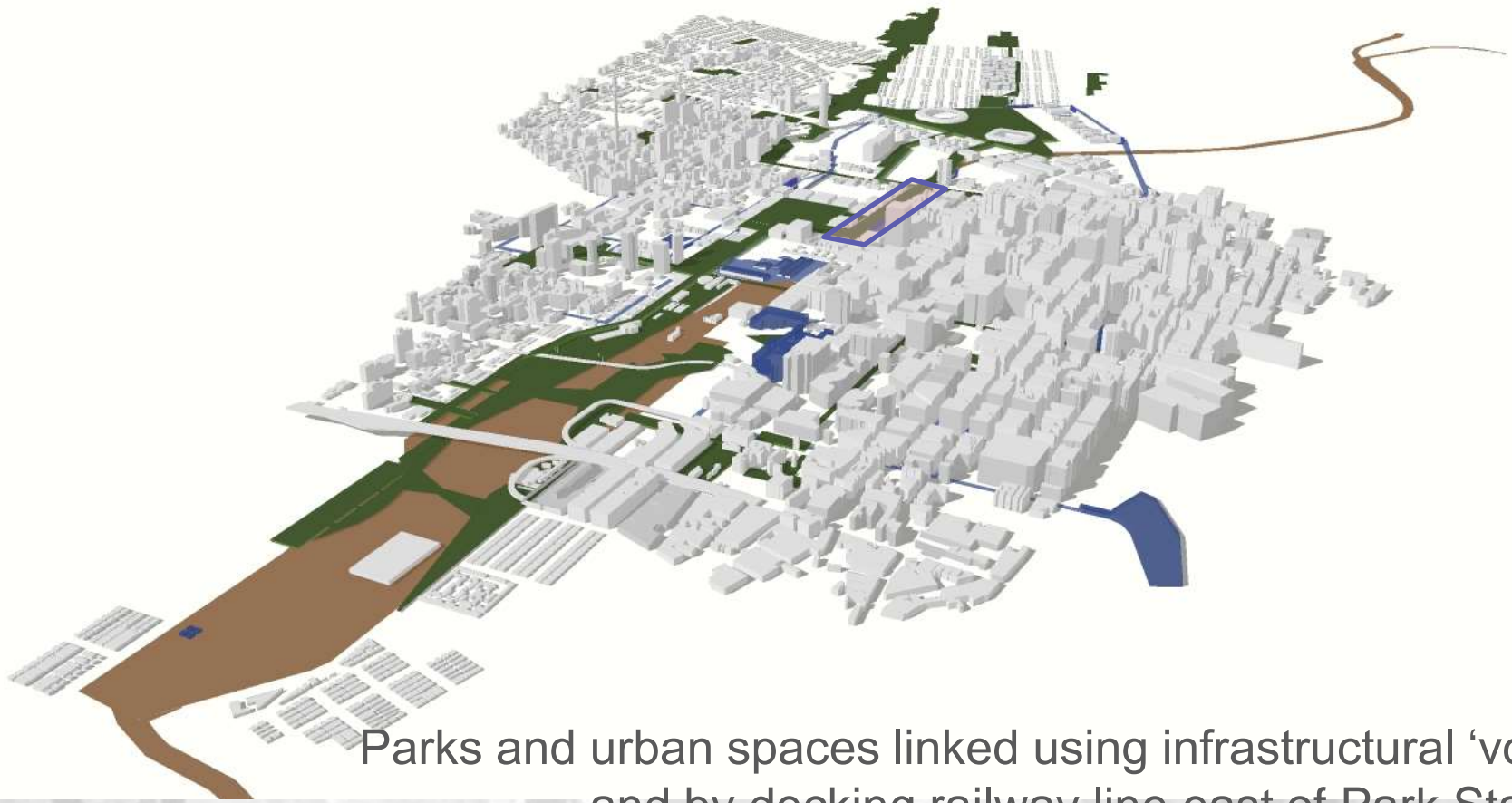




**Tapestry Competition Entry: Using the park as the integrated bridging device to connect Braamfontein with the CBD**

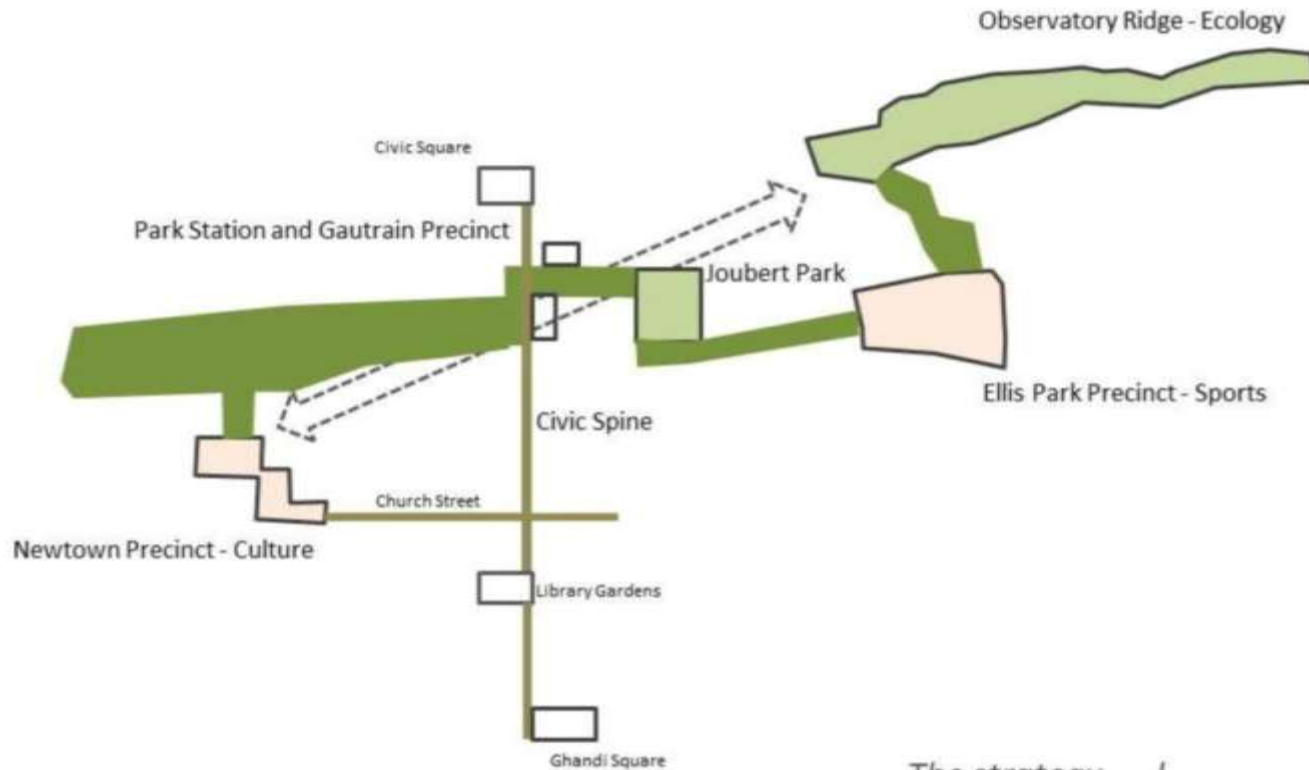
**Inner City Public Park Vision**





Parks and urban spaces linked using infrastructural 'voids'  
and by decking railway line east of Park Station





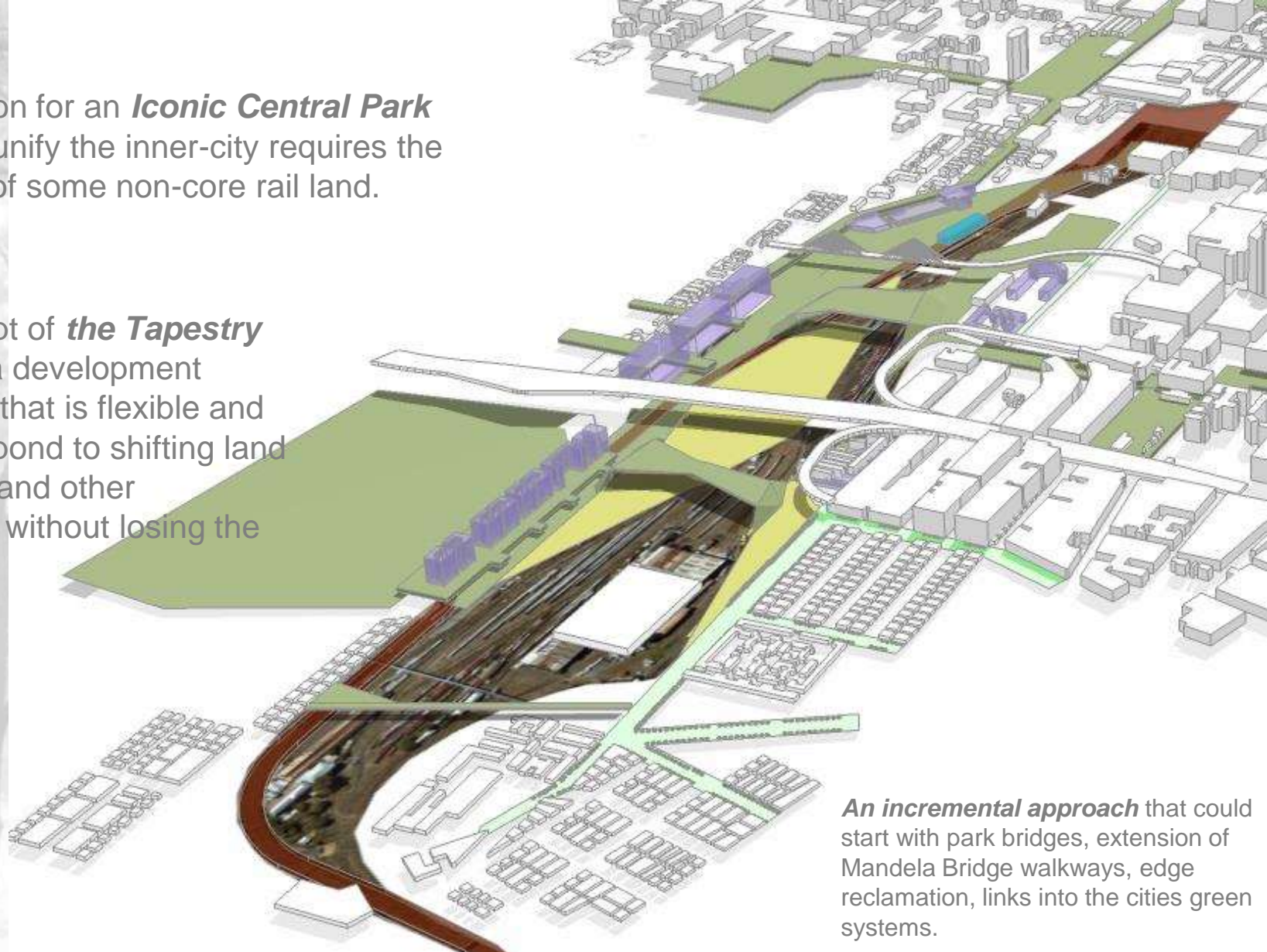
*The strategy ... !*

Strategy for the THE SEAM, which will ultimately connect Observatory Ridge to Newtown Cultural Precinct through a number of park and urban space interventions



The Vision for an **Iconic Central Park** that will unify the inner-city requires the release of some non-core rail land.

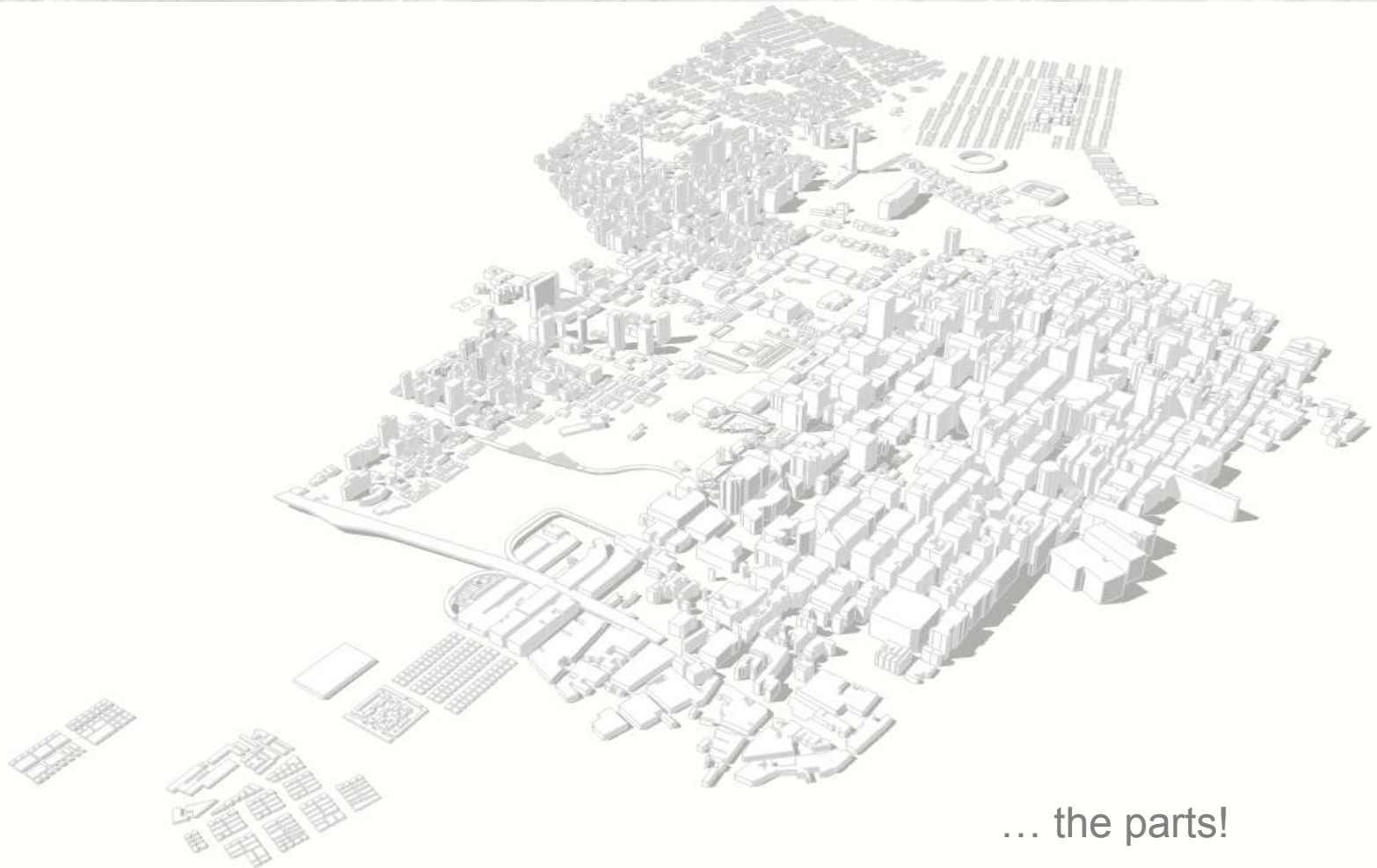
The concept of ***the Tapestry*** allows for a development framework that is flexible and able to respond to shifting land ownership and other constraints without losing the vision.



***An incremental approach*** that could start with park bridges, extension of Mandela Bridge walkways, edge reclamation, links into the cities green systems.

MMA + NLA + Fiona Garson + Cohen and Judin





... the parts!



*Observatory Ridge*



*Natural Ecology*

**Inner City Public Park**





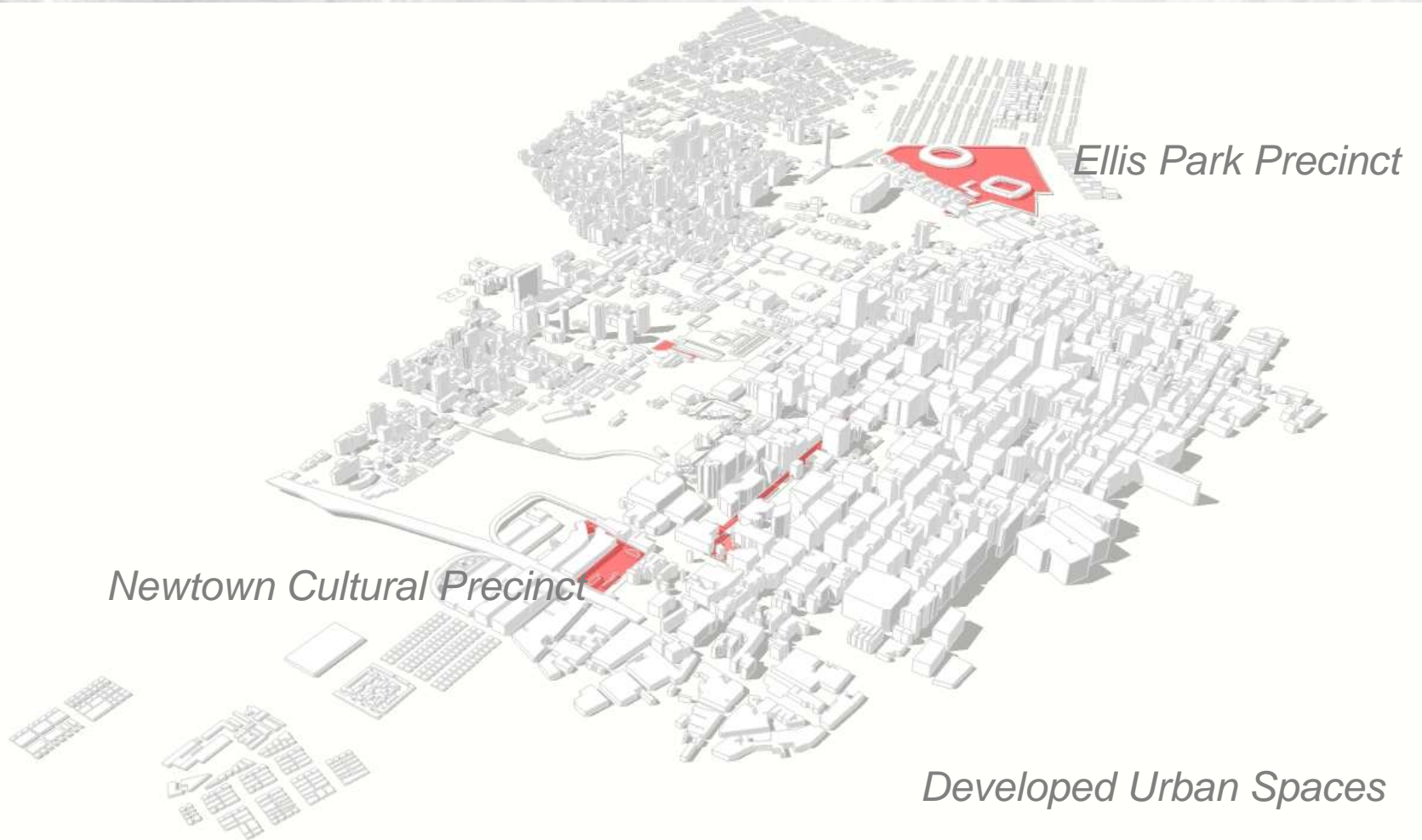


*Developed Parks*

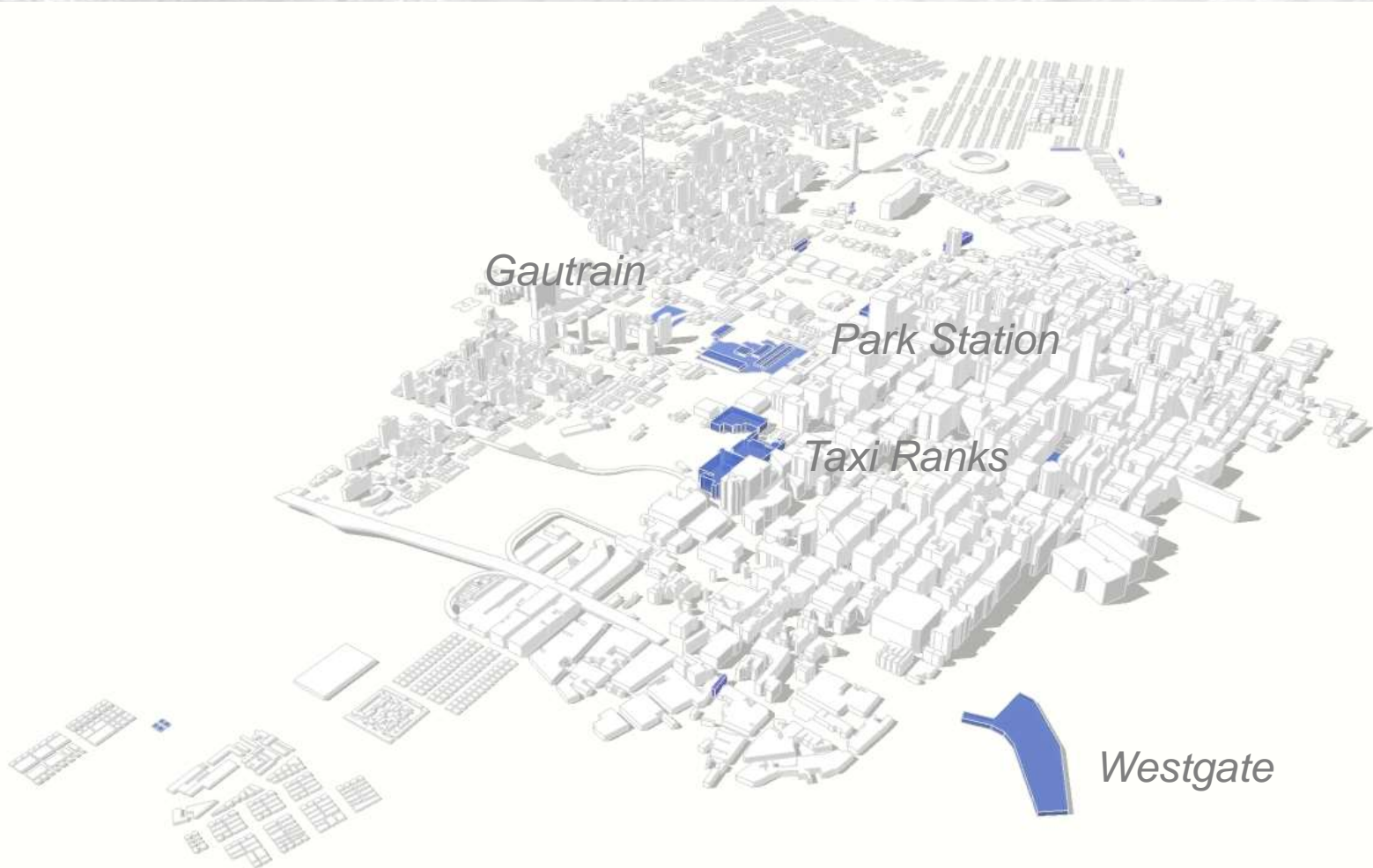
**Inner City Public Park Vision**









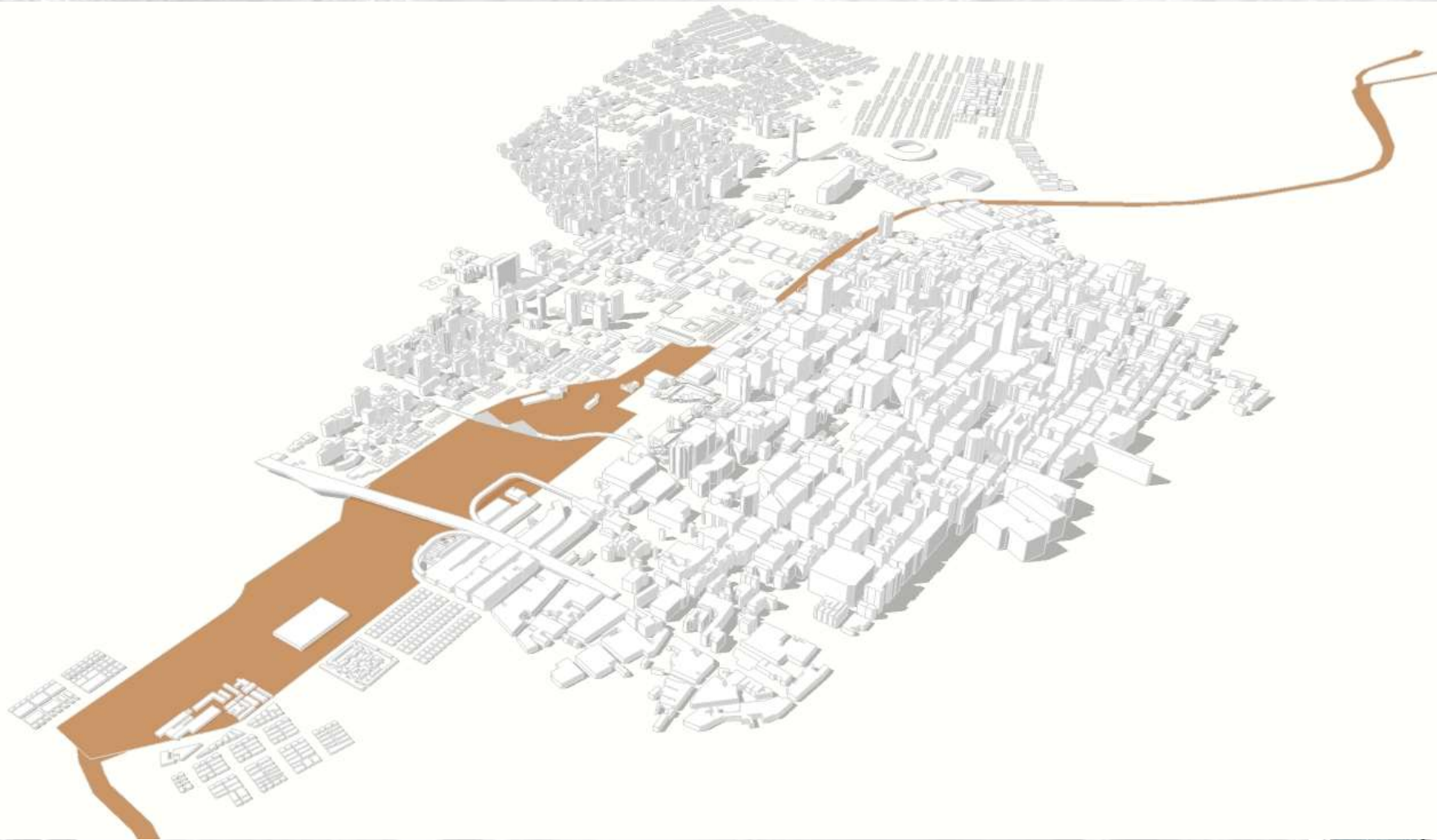


*Transportation nodes*

**Inner City Public Park**







*Railway and shunting yards*

**Inner City Public Park**







*Parts put together .... the beginning ... !*

Inner City Public Park







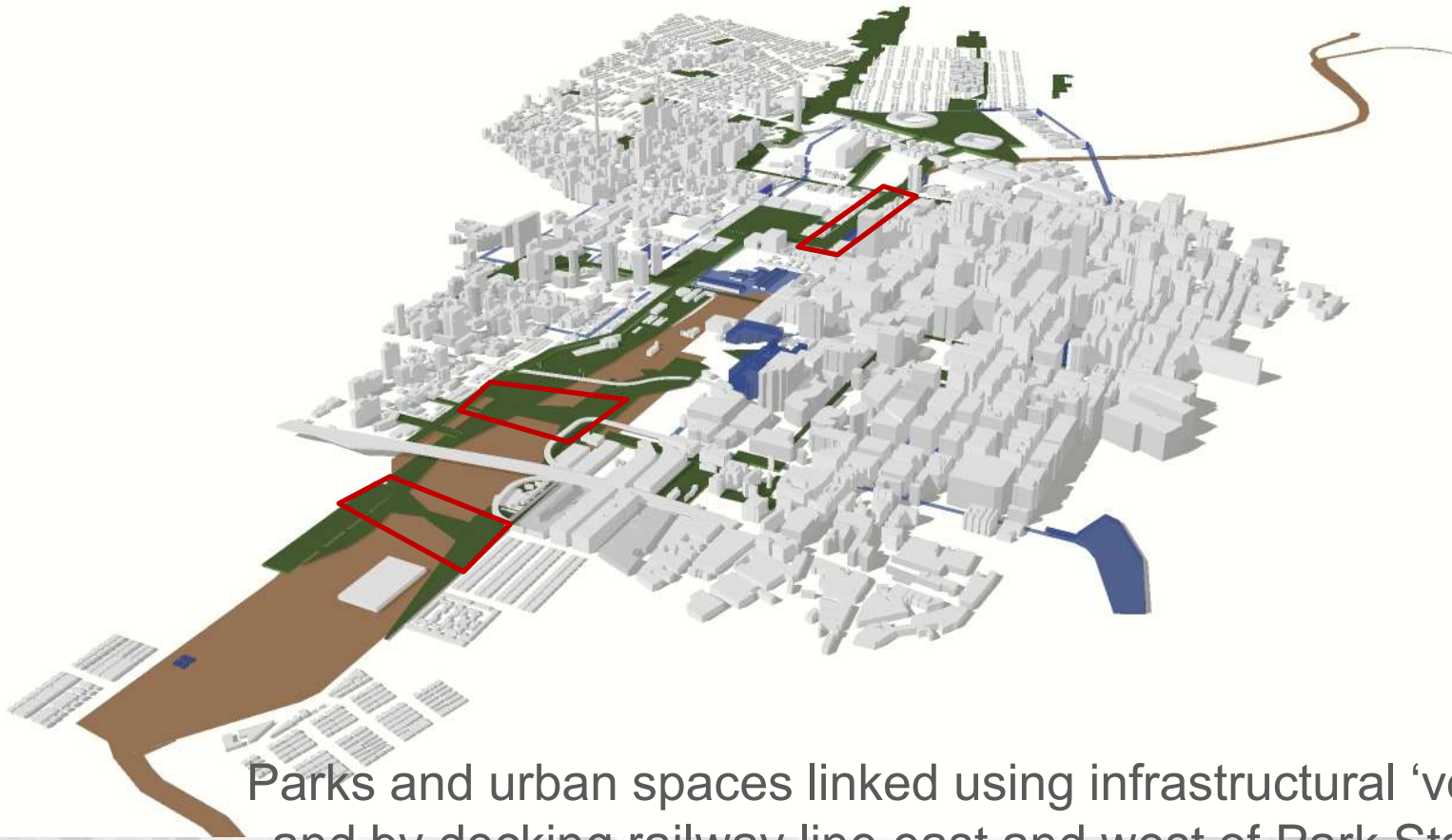
Railway line bridged with multi-functional urban park: *Tapestry*



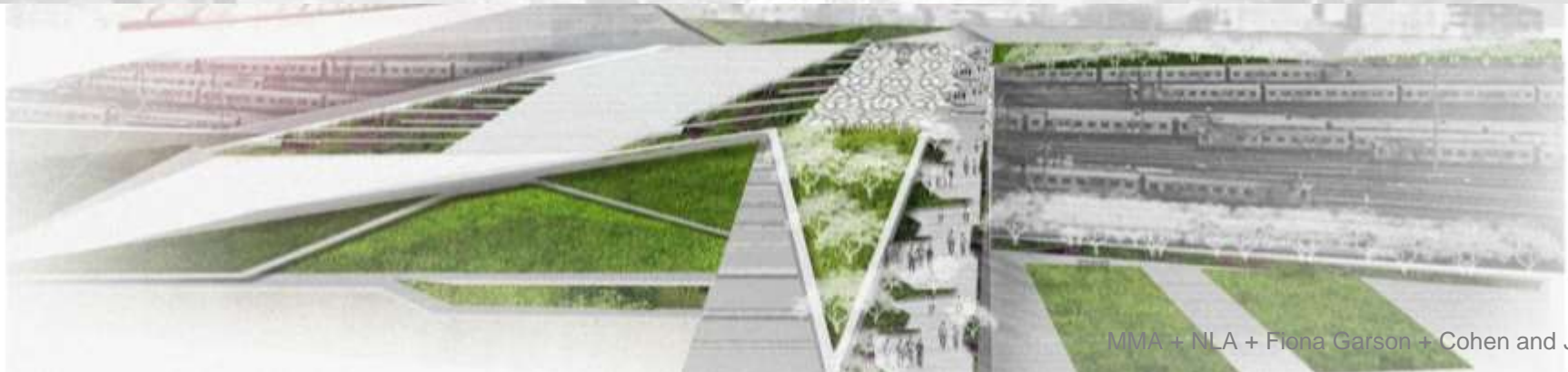
MMA + NLA + Fiona Garson + Cohen and J. Lee



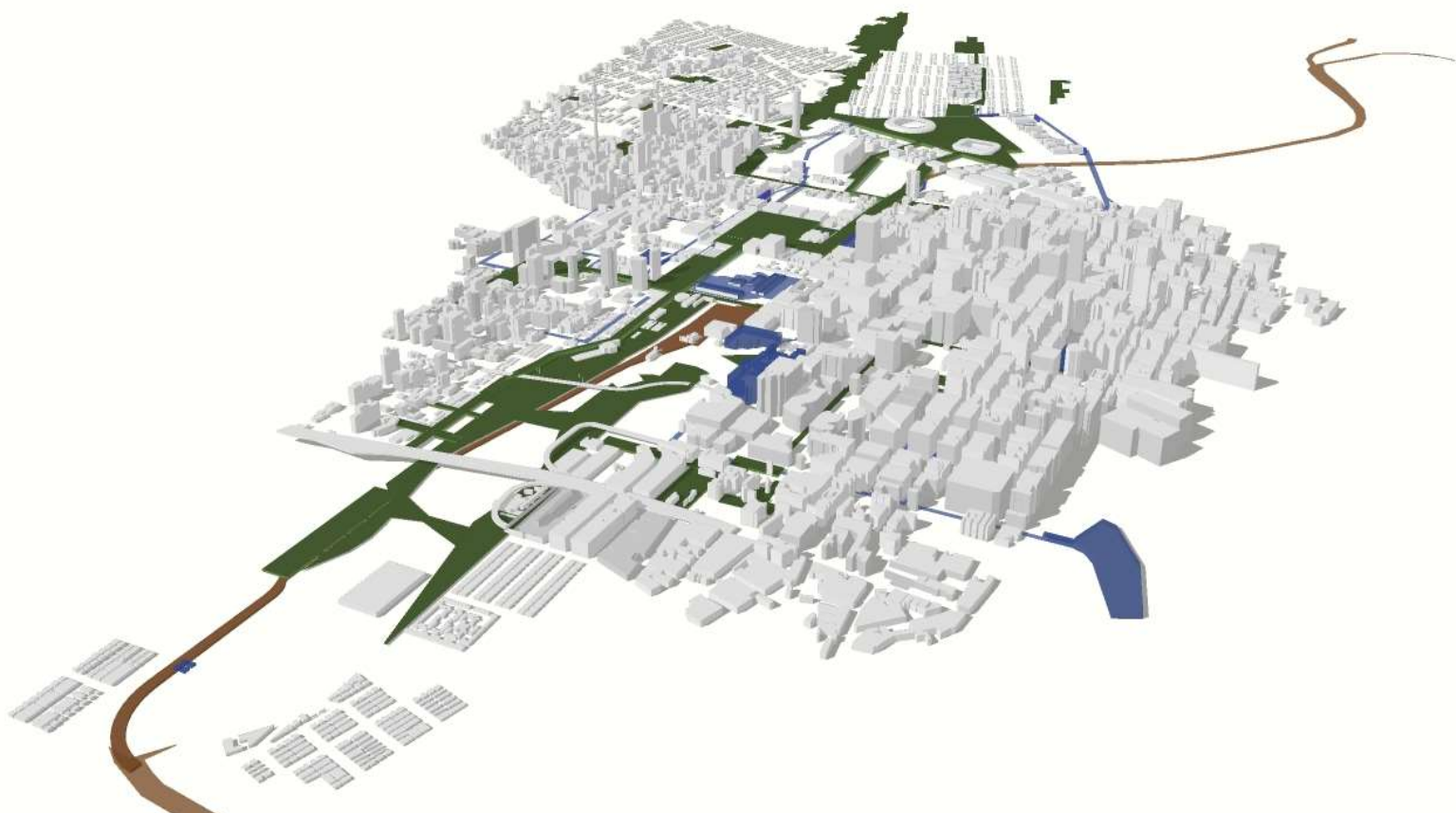




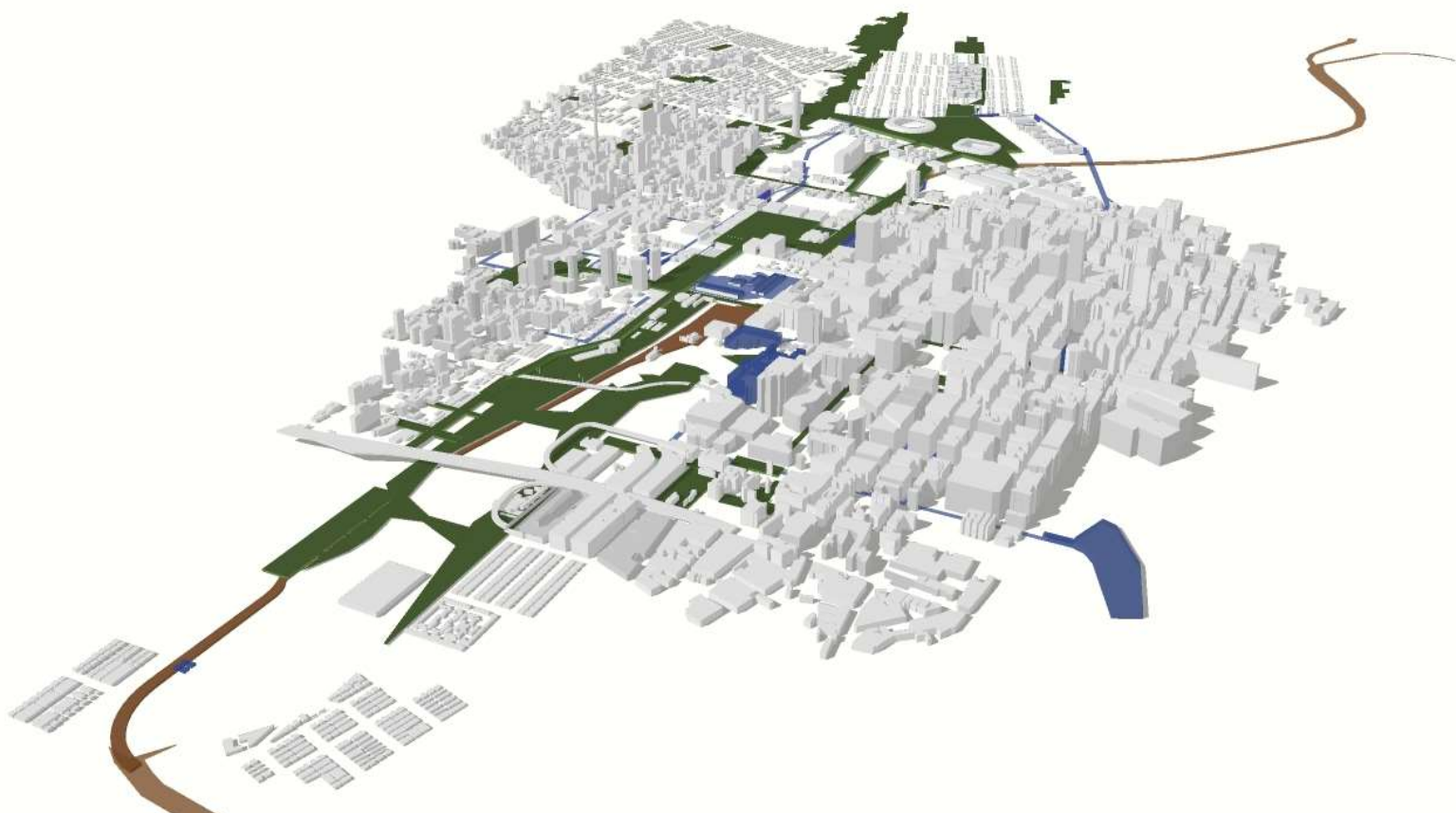
Parks and urban spaces linked using infrastructural 'voids' and by decking railway line east and west of Park Station



















*Tapestry Park*



MMA + NLA + Fiona Garson + Cohen and Judin







*Tapestry Park – Final Phase*

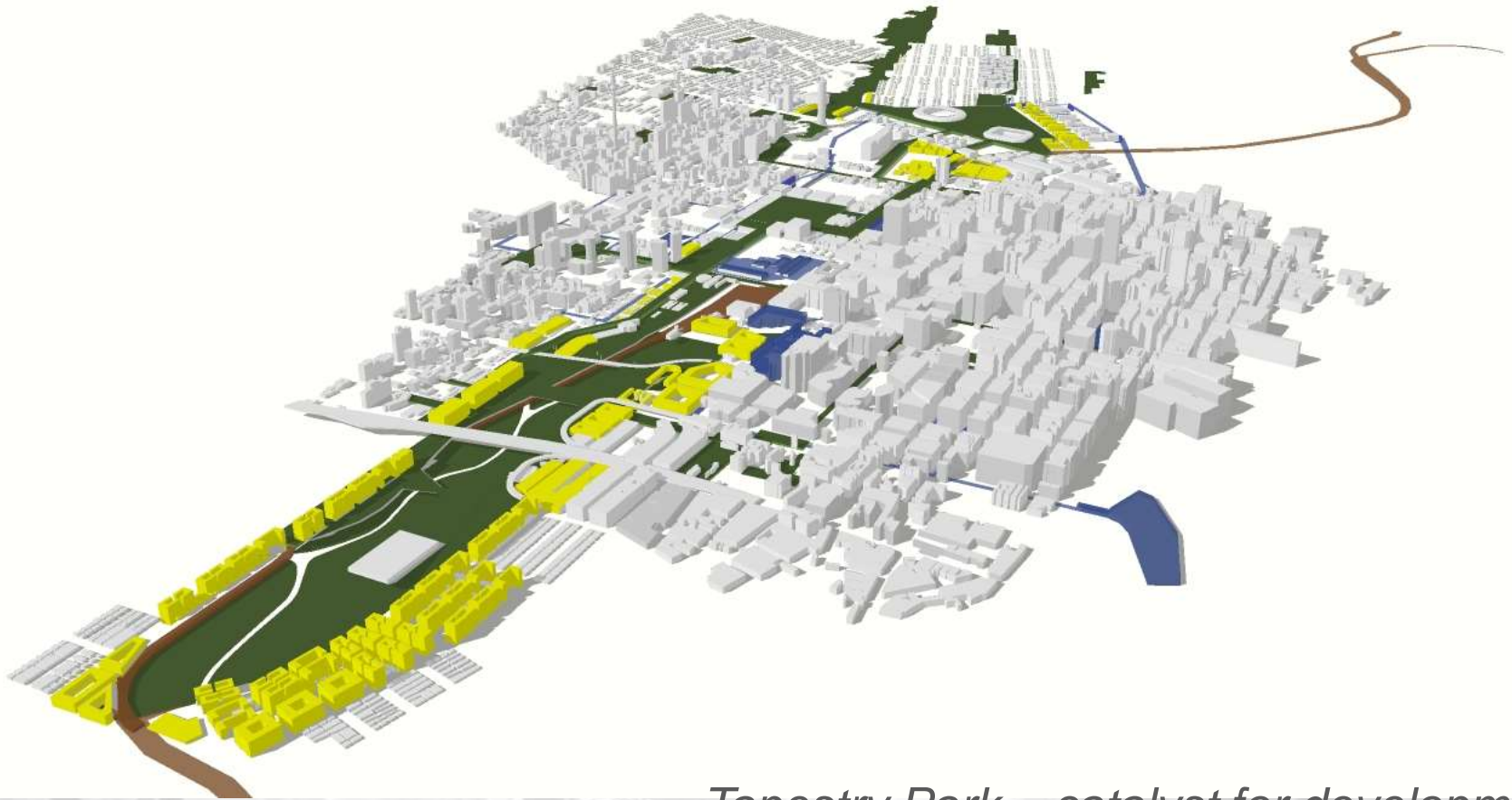


MMA + NLA + Fiona Garson + Cohen and Judin









*Tapestry Park – catalyst for development*



MMA + NLA + Fiona Garson + Cohen and Judin



## Newtown Landscape Architects

since 1994

Landscape Architecture  
Environmental Planning  
Urban Design



369 Government Road  
Johannesburg North

PO Box 36  
Fourways  
2055

(t) +27 11 462 6967  
(f) +27 11 462 9284

