



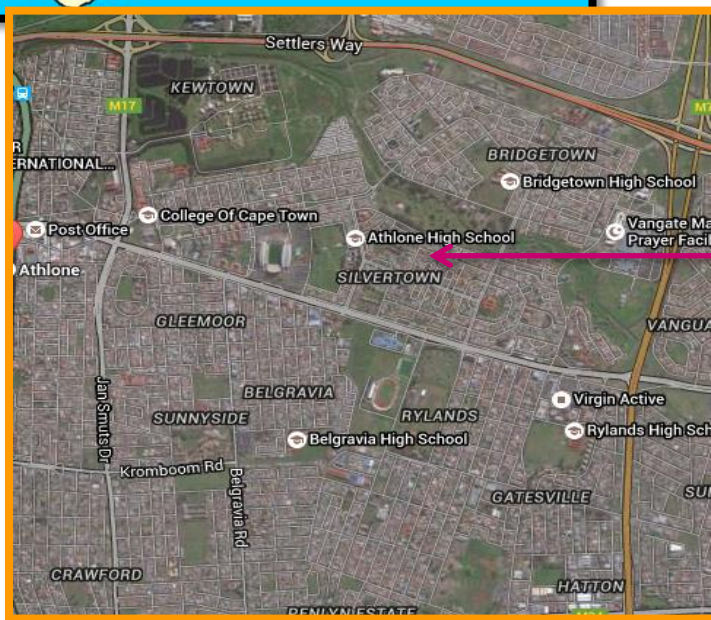
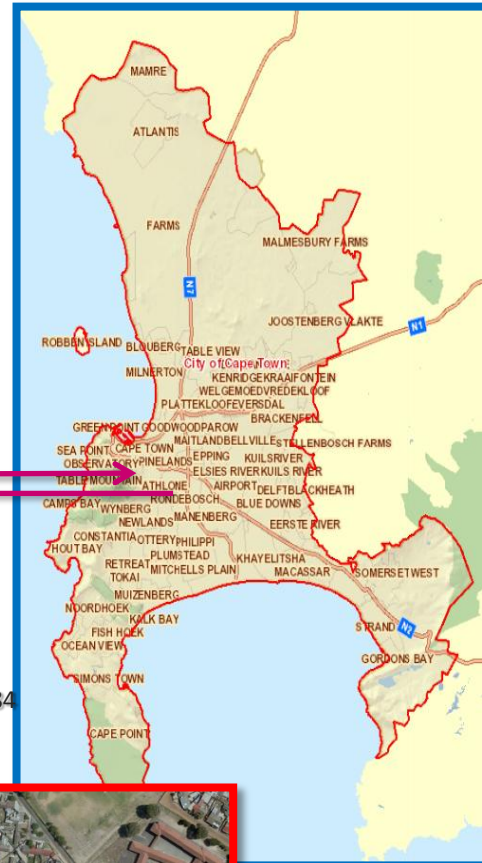
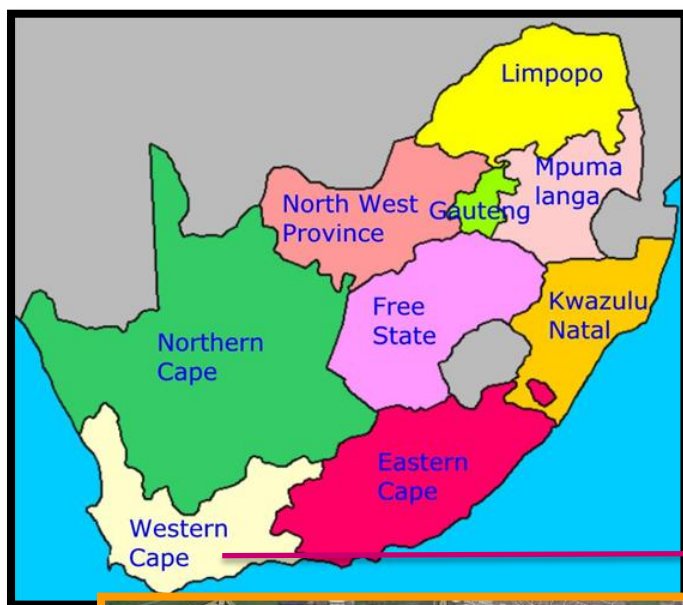
CITY OF CAPE TOWN
ISIXEKO SASEKAPA
STAD KAAPSTAD

Nantes Park

a Developed park facility, meeting the demanding needs of a diverse Community with a rich cultural and political history.

Jacques Cedras – City Parks

Making progress possible. **Together.**



2011 Census Athlone
Population 45 048
Households 11 739
Average Household Size 3.84



Nantes Park

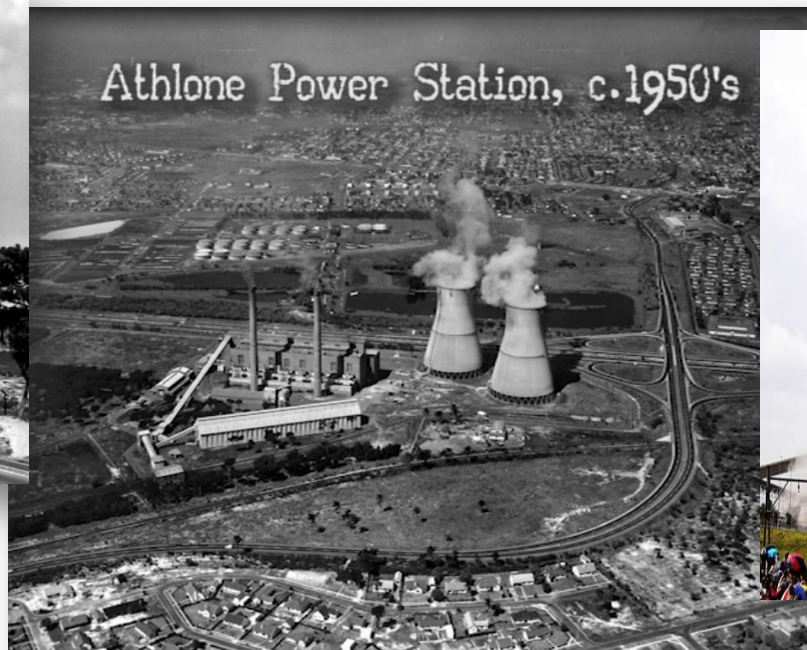
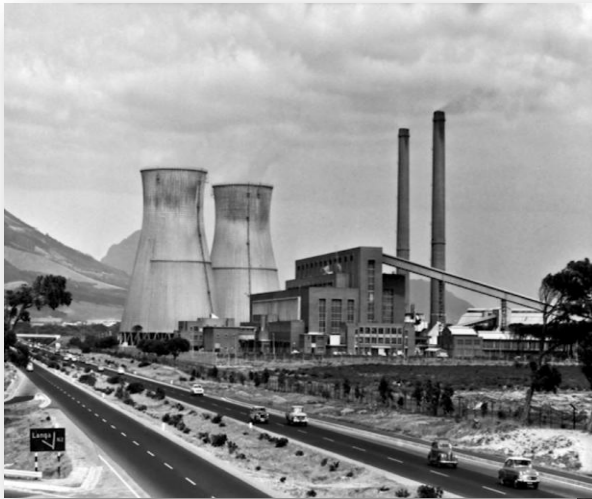
17ha = 22 rugby fields



CITY OF CAPE TOWN
ISIXEKO SASEKAPA
STAD KAAPSTAD

Athlone: 1920, 1930, 1950

- Athlone was previously known as West London and had its name changed to 'Athlone', in **honor of the Earl of Athlone**, who served as Governor General and Commander in Chief in South Africa in the 1930's
- Many references are made to the **Cape Flats as a dumping ground of the Previous Apartheid Regime** and where many hundreds of thousands of black people were forcibly removed and relocated as part of the **Group Areas Act of 1950(Act No. 41 of 1950)** which mandated residential segregation throughout the country.
- **Athlone really grew into a melting pot of different cultures** with the Athlone CBD being a daily hub of local grocers selling their fresh delicious fruits and veggies and other Cape Malay eats.
- Its noted as being a **true example of how different cultures can join together** and become a single society.



Athlone Community: the political struggle

Segregation, apartheid and forced removals in Cape Town

Cape Town's painful history of segregation and forced removals began long before the apartheid era. In 1901, Africans living in the City were forced out to Ndabeni, and in the late 1920s, further out to Langa. The official reason was “health and hygiene”, the aim was segregation. In the 1920s and 30s, ***Council planners started their ambitious housing projects, inspired by ideas about slum clearance and urban renewal*** from the Swiss architect Le Corbusier and the British concept of Garden Cities

Athlone Community: the political struggle



CITY OF CAPE TOWN
ISIXEKO SASEKAPA
STAD KAAPSTAD

Athlone Community: the political struggle



1983-1985



CITY OF CAPE TOWN
ISIXEKO SASEKAPA
STAD KAAPSTAD

Athlone Urban Park: 1982

“The greatest visual and amenity impact would be achieved by initially concentrating efforts and resources in a few special parks, where the full treatment could be given.

The advantage of a specially treated Athlone Park would be its central location, accessibility and available space, as well as the presence of an existing stream and established trees. An exciting variety of activities could be offered such as a fairground, boating pond, and outdoor concerts set in a landscape park with pools, waterfalls, trees and flower gardens” – GREENING THE CITY: Open Space & Recreation Plan for Cape Town 1982

Athlone: Greening strategy 1982


3.10 Urban Parks

See Policy 8 in Part 2.

It is proposed to revitalise existing urban parks with improvements aimed at attracting a wide spectrum of new users.

Ref. No.	PROJECT	First half 1983	83/84	84/85	85/86	86/87	87/88	Balance (lower figure in 1988 rands)
URBAN PARKS		In thousands of rands						
70	Athlone Park		125 155	250 356	250 409	250 470	125 270	200 463
71	Trafalgar Park	60 45	40 49					
72	De Waal Park	50 36	75 93	25 36				

ATHLONE PARK
Ref 70 60 ha



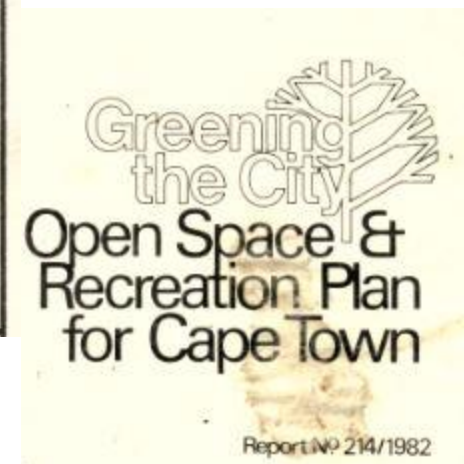
NOTE
Part of the Athlone Sewage Treatment Works site could be incorporated at a later stage
Development of plan TPX 7181

REGIONAL ACTIVITY PARK

- Extensive tree planting
- Small lake
- Amphitheatre and bandstand
- Area for occasional fairs
- Formal gardens
- Viewing tower
- Concessionary restaurant/tearoom
- Pets corner
- Picnic areas

PRIORITY
HIGH except
sewerage works
LOW rest

COST R1 200 000
H R1 000 000
L R200 000



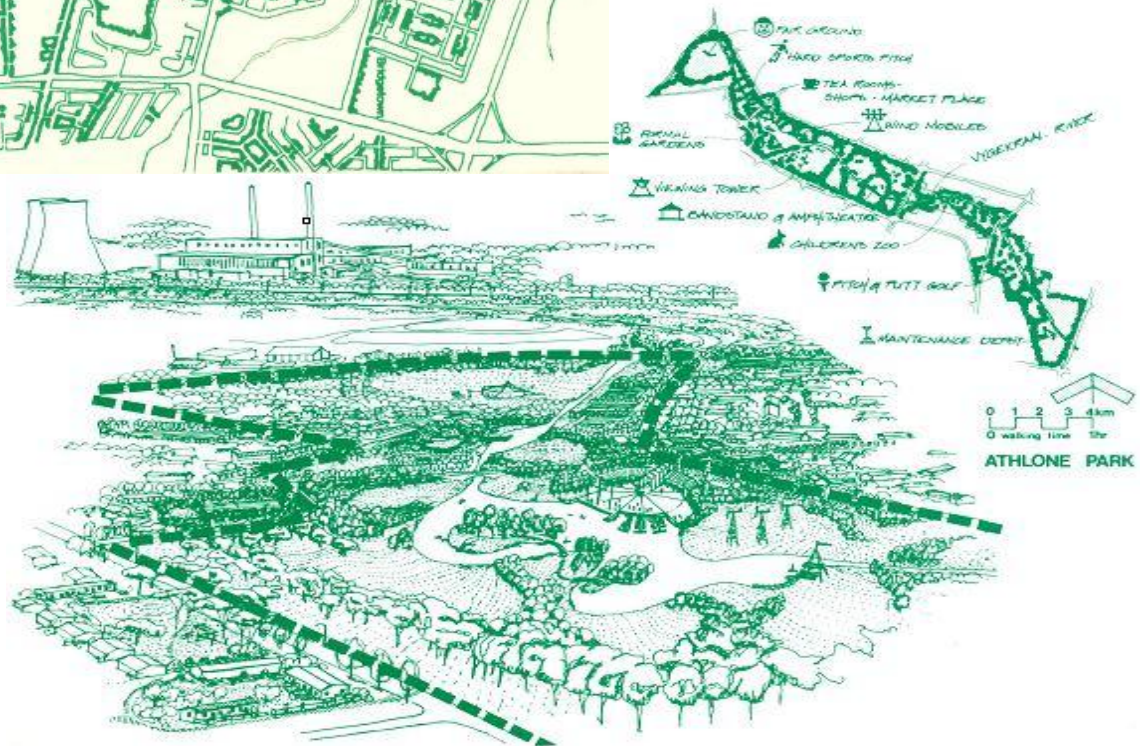
Athlone: Greening strategy 1982

SOMETHING SPECIAL ON THE CAPE FLATS

The general lack of natural amenity on the Cape Flats, compared to other parts of the City, the limiting conditions for tree planting created by the sandy soils and wind and the 'low-key' design of most open spaces, mean that a special effort is needed to provide attractive landscaped parks.

The greatest visual and amenity impact would be achieved by initially concentrating efforts and resources in a few special parks, where the full treatment could be given.

The advantage of a specially treated Athlone Park would be its central location, accessibility and available space, as well as the presence of an existing stream and established trees. An exciting variety of activities could be offered such as a fairground, boating pond, and outdoor concerts set in a landscaped park with pools, waterfalls, trees and flower gardens.



Nantes Park: Construction and development



Nantes Park: capturing and incorporating of the history into the design



CITY OF CAPE TOWN
ISIXEKO SASEKAPA
STAD KAAPSTAD

Nantes Park: Construction and development



NANTES PARK LOCATION DEVELOPMENT PLAN. CITY PARKS DIRECTORATE



CITY OF CAPE TOWN
ISIXEKO SASEKAPA
STAD KAAPSTAD

Nantes / Die Nantes / Nantes Park

"The Springbok radio serial **Die Geheim van Nantes** came on about quarter to three. Every day in the summer holidays and even on school days we used to take our wireless and we'd lay on the veld and listen to the radio with all the kids and a picnic basket. That's how the name Nantes came about."

Nantes Park: construction timeline



Nantes Park: history / memories / real live stories captured

- So many paths criss-cross the Nantes, connecting Kewtown, Bridgetown, Silvertown and Parktown - paths between family members, friends and lovers, paths from home to church and mosque, to crèche and school and sports, to shops, bus stop, work, bioscope This green open space holds many memories.
- “The Nantes always had a stigma, it was out of bounds but of course the grass was always greener. We did the traditional boys-will-be-boys thing on this vast open space, played, hunted, built our dens ” - **Riedewhaan Allie (Bridgetown)**
- “The Council used to organise stage shows or concerts on the Nantes once in a while. About 1977 I took my future wife to the funfair, Sunday afternoon, people milling around, Nantes was the place to go! ” - **Sedick Hendricks (Parktown)**
- “The Nantes was a retreat, a safe space for bonding, guys standing around the cars just talking. You have a drink, you loosen up and speak your mind, your problems come out. Even now, if friends or family visit from overseas they have a drink with us next to the Nantes. It’s a nice roots thing actually.” - **Severo Jutzen (Silvertown)**
- “In the 80s we had student marches across the Nantes - Athlone Schools Action Committee joining up with Peak View and Bridgetown High, and meetings at the bridge. Nantes was a cross-over space, also a beautiful space for young love and some broken hearts!” - **Premesh Lalu (Rylands)**
- “Life in the community, the vibrancy, with the traditional choirs and Nagtroepe and Klopse - part of the family was into Klopse, part was anti but they didn’t object to the Nagtroepe. Sunday afternoon choir practice happened on the Nantes.” - **Riedewhaan Allie (Bridgetown)**
- The neighborhoods around the Nantes became well known for grassroots activism, civic organization, campaigns and protests, especially in the 1980s. The struggle brought together people from different areas, social backgrounds and political traditions

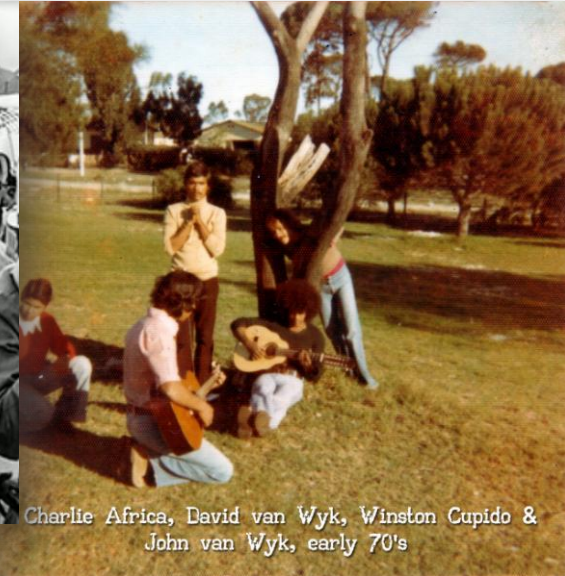
Athlone Park / Nantes / Die Nantes / Nantes Park - memories



Christine & Laura Youle, c. 1970's



1975



Charlie Africa, David van Wyk, Winston Cupido & John van Wyk, early 70's



Nantes Park Athlone, c.1945

Nantes Park
Aerial 1945



Pillay Wedding



1978



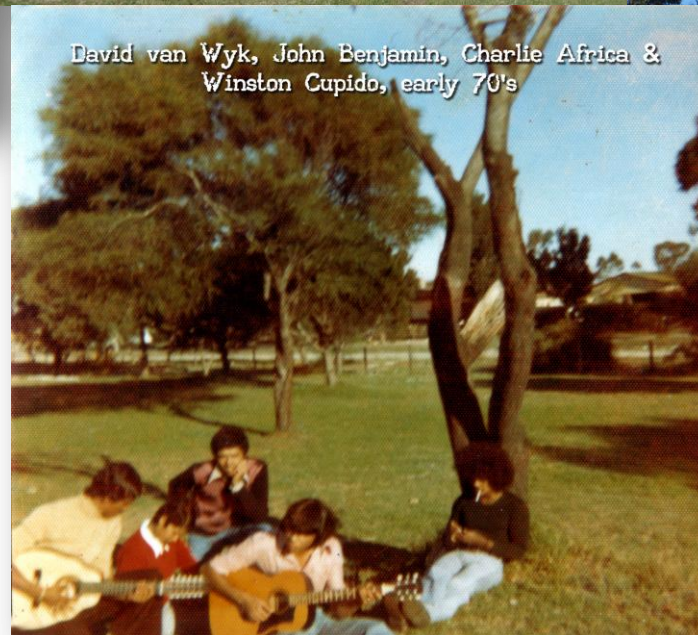
CITY OF CAPE TOWN
ISIXEKO SASEKAPA
STAD KAAPSTAD

Nantes Park:

- 1.) **R28 Million** capital costs
- 2.) **March 2012** start date
- 3.) 17 ha, the **biggest Capital outlay** of this nature
- 4.) Incorporating the rich history and memories by **extensive Public Participation**
- 5.) Park **opened 12 October 2013**, aprox. 18 months of construction
- 6.) Planned as an **events venue and recreation facility**
- 7.) Offerings include: **outdoor gym, skate park, climbing walls, picnic, amphi-theater**



Nantes Park: then and now



Athlone Park vs Nantes Park

<u>Athlone Park</u>	<u>Nantes Park</u>
<ul style="list-style-type: none"> • R1,2 million budget over 4 years • Public OPEN space / not fenced • Dangerous place to frequent especially at night • Picnics and alcohol usage was the norm • No recorded economic opportunities • No or little variety of recreation activities, old play equipment • No recorded work opportunities or economic benefits to immediate community • No recorded partnerships with civic organizations, community didn't take any ownership • No recorded recreational events, only memories of a regular fun fair and some 'plays' during festive season • No learning opportunities • Lack of accessibility • No recorded inter departmental initiatives or programs 	<ul style="list-style-type: none"> • R28 million budget spent over 18 months • Fenced off area including semi access control • Security / park wardens / visual deterrents CCTV camera monitoring system • Picnics and permitted events / bylaw restrictions / events application process • Economic opportunities i.e. Tearoom lease • Various active / passive recreation i.e. Outdoor Gym / Climbing wall / Skate park • 18 EPWP work opportunities created last financial year affecting 36 immediate households • Partnerships with 5 civic organizations, 3 crèche's and 2 NGO's, 4 different churches frequently use the facility, 'friends group' & steering committee establishment • Recorded usage of events numbers of participants including the type of events incl fun walks, office outings, youth days, cultural • Local schools as part of their Life Orientation are very involved, to date 4 learners used the Park as a project • Designed for user friendliness and desire lines; clientele as far as 20km away due to its location • Standing arrangements with S&R 'come and play' program during school holidays and Social Development



Nantes Park: modern day



nantes park cape town



LATEST SPORT ENTERTAINMENT POLITICS OPINION FEATURES

Web Maps Images News Videos More Search tools

About 540 000 results (0,51 seconds)

STATE OF THE ART PARK FOR ATHLONE

Cape Town Mayor Patricia De Lille on Saturday unveiled a multi-million rand upgraded park.



Cape Town Mayor Patricia de Lille in conversation with EWN on September 2012. Picture: Aletta Gardner/EWN

Cape Town Mayor Patricia de Lille Athlone Cape Town Mayor

Email Print Tweet

Eyewitness News | 2 years ago

CAPE TOWN – Cape Town Mayor Patricia De Lille on Saturday unveiled a multi-million rand upgraded park for the greater Athlone area.

Nantes park now boasts an outdoor gym, a skateboard park, a tea room and even its own open-air amphitheater.

De lille said they plan to add some braai facilities soon.

Redevelopment plans for Athlone's Nantes Park underway. If we consider the broader context in w

Posted by Future Cape Town on March 22, 2011 in Uncategorized · 0 Comments

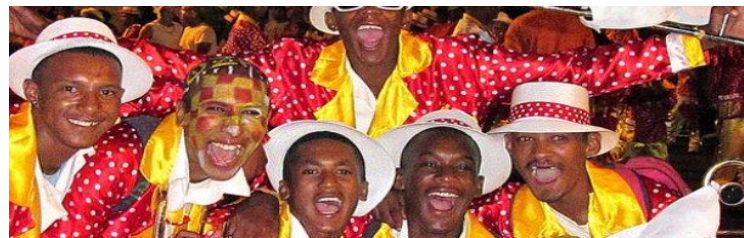
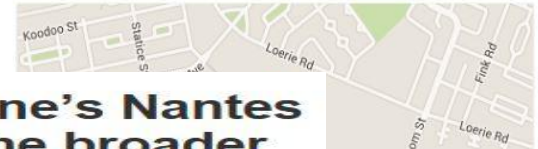
Tweet

Pin it

Share

Redevelopment plans for Athlone's Nantes Park underway.

If we consider the broader context in which the park exists, it has the potential to act as a green spine connecting Athlone Stadium to the Baseball Club facilities (far right) via an integrated & pedestrianized green space.



Home > Green news & views >

Cape Town takes its parks to the next level



CITY OF CAPE TOWN
ISIXEKO SASEKAPA
STAD KAAPSTAD

Upcoming events

- South Africa
- Limpopo
- Mpumalanga
- North West Province
- Northern Cape
- Western Cape

Search
Signposting in South Africa! Search our Abroad Directory to find the perfect location for your holiday self.

Start typing...

Visiting Athlone

Introducing Athlone
• About Athlone
• About Southern Suburbs
• Leave a Review about Athlone

Overnight in Athlone
• All Accommodation Types
• Guest Houses
• Bed & Breakfast
• Self Catering
• Holiday Apartments & Suites
• Holiday Cottages & Chalets
• Holiday Homes & Villas

ACCOMMODATION | HOTELS | DESTINATIONS | OUT & ABOUT | TOURING | WEDDINGS | CONFERENCES



Nantes Park
Address: Aggeneys Road, Bridgetown, Athlone, Cape Town
Phone: +27 (0)21 637-0336
Directions: Day in Athlone, in Western Cape



During the 1970's, Nantes Park was an named for local residents' converging here to listen to 'Die Ghele van Nantes' on Springbok Radio. However, the next few decades saw a sharp decline in the security of the park, and it soon fell into a state of disrepair and neglect. So, when the City Parks Department suggested investing millions of Rands into revamping the park in 2007, the local community welcomed this idea with open arms, and was an active contributor to the success of this initiative.

Situated in the vibrant and historic suburb of Athlone, Nantes Park has become a hotspot for the neighbourhood's youth to enjoy local activities, fresh air and warm sunshine. The B&B and skateboard area has been an important part of encouraging health, fitness and keeping busy to avoid being antisocial, and to discourage criminal activities.

Nantes Park is open and free to enter every day during the daylight hours and is equipped with public facilities.

Cape Town Conferences
Touring the Western Cape
Transport & Travel Arrangements
Out and About

Recommended for you

Popular Tourist Routes
• Cape Wine Routes
• Route 62
• Cape White Coast
• The Penguin Route
• Robben Island Heritage Route

Destinations in the Southern Suburbs
Other overnight options, near Athlone
• Claremont
• Constantia Valley
• Gugulethu
• Hurlingham
• Observatory
• Pinelands
• Plumstead
• Rondebosch

Unauthorized use of the photos is strictly prohibited.

Nantes Park: the diversity continues . . .

- A place to **'af koel'**
- A place to **relax and picnic**
- A place to **enjoy local cultural talent / musicians / theatre / Cape Malay**
- A place to enjoy our **human rights**
- A Place to **enjoy the environment**
- A **safe play park for all ages** and families
- A place to **share awareness around social issues and challenges**

Nantes Park: Utilization & Partnering



CITY OF CAPE TOWN
ISIXEKO SASEKAPA
STAD KAAPSTAD

Nantes Park: Utilization & Partnering



CITY OF CAPE TOWN
ISIXEKO SASEKAPA
STAD KAAPSTAD

Nantes Park: Utilization & Partnering

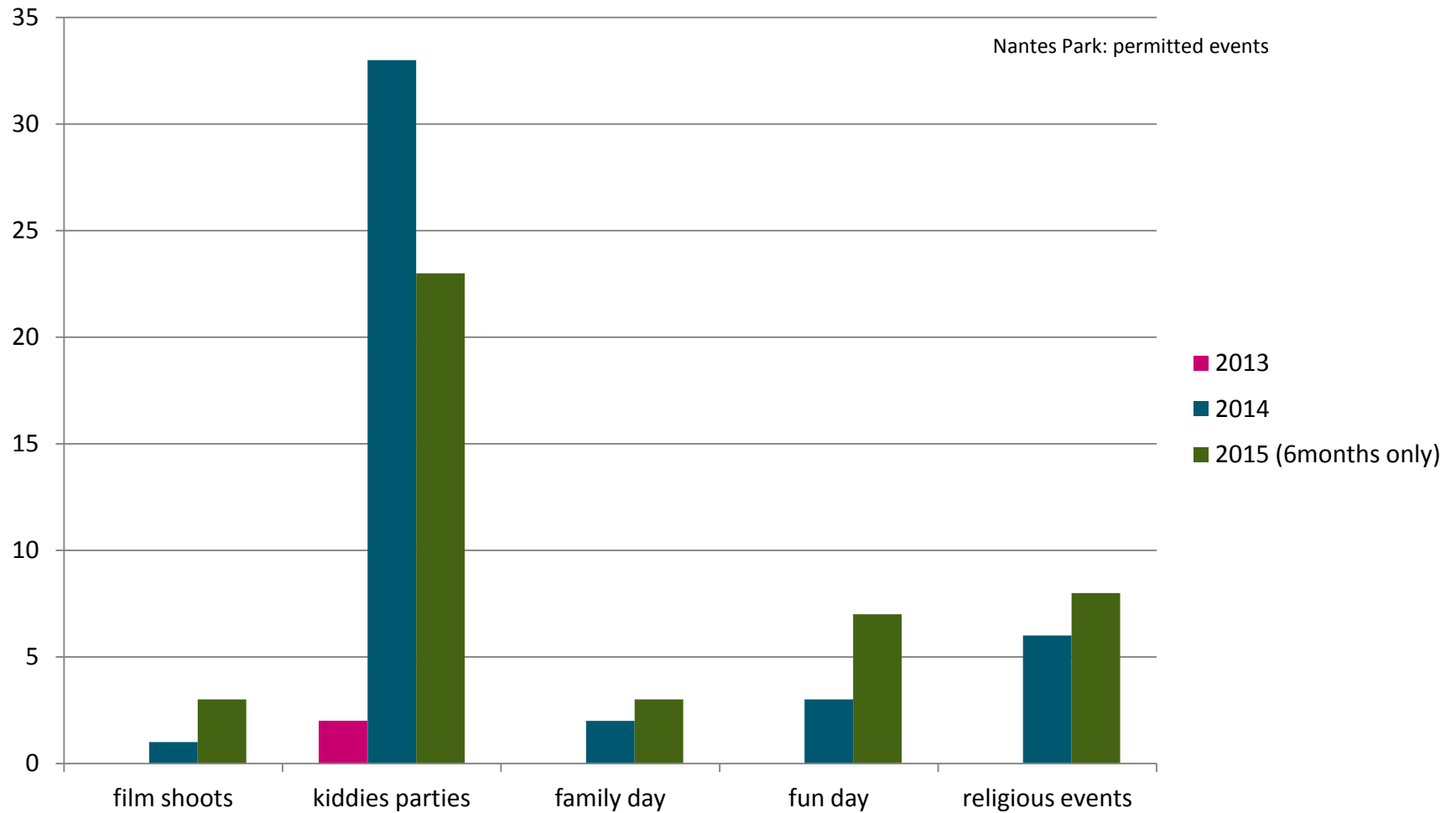


CITY OF CAPE TOWN
ISIXEKO SASEKAPA
STAD KAAPSTAD

Nantes Park: Utilization & Partnering



Nantes Park: a Managed Facility



Nantes Park: Creating and establishing partners

BRIDGETOWN THEATRE COMPANY

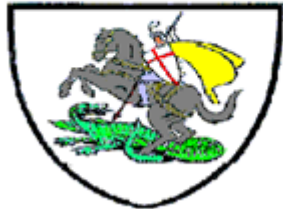
98 Cornflower street · Bridgetown · Athlone · 7764 ·
Cape Town · South Africa ·

E mail: bridgetowntheatre@gmail.com & face book

Website: bridgetowntheatre.wordpress.com * Affiliated to the Bridgetown Civic

• Western Cape Provincial government's Department of Cultural Affairs.

ST GEORGES CHURCH
CALENDULA ROAD
SILVERTOWN



MORAVIAN KIRK IN SUID-AFRIKA

MORAVIAN CHURCH IN S.A.

BRIDGETOWN

Tel: (021) 637 1456
Fax: (021) 637 1456
Cell: 073 621 9115
angusthman@gmail.com



Lector/Minister
Rev. A. HUMAN
5 Bosdoff Road
Bridgetown 7764

Att: Mr J. Codras

APPLICATION FOR USAGE OF NANTES

On behalf of our congregation I greet you in the Name of the One we hold Holy an

We hereby wish to apply for the use of Nantes for our sports day which will be held
Saturday 12 September 2015. From 09h00 – 15h00

I trust that you would respond favourably to our big request and that you would inf
your decision at your earliest convenience, and trust that God will continue to bless
your endeavours abundantly.

I thank you in anticipation and trust that you would respond favourably to our requ

Yours in God's service

A Human

Rev. A. Human
2015.07.24.



JIMMY NEVIS

**4 SUPPORTING
BANDS
NANTES PARK**

31 JAN 2016



Reconstructed Living Lab (RLabs) : Section 21: 2009/024318/08
RLabs, 66 Tarentaal Road, Bridgetown, Athlone, 7764 - Tel: 021 6991463 - Fax: 0862115079
Email: angel@rlabs.org - www.rlabs.org

04 March 2015

To whom it may concern:

Re: Request To Use Venue

RLabs is a non-profit organisation who currently works in marginalized communities and townships across South Africa serving the most vulnerable through training, personal development, support and technology social services. Since its inception RLabs have served more than 32,000 community members with training and more than 5 Million people through its mobile and internet social development services.

We would like to request to use the Nantes for a field trip with our photography students on the 14 March 2015, Time 8:30am to 12:00pm.

Your consideration will be highly appreciated.

Yours Sincerely

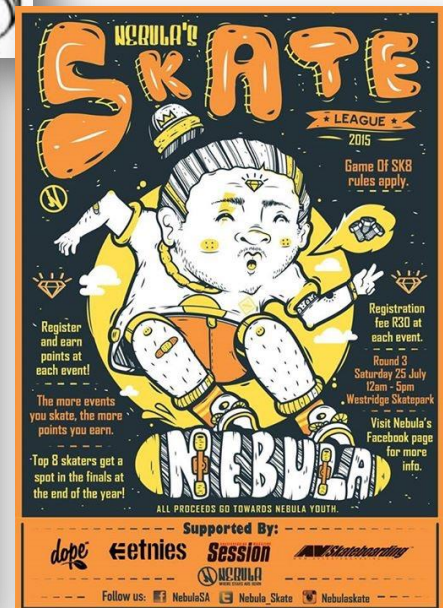
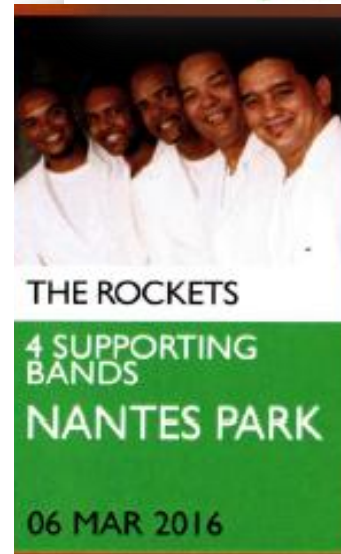
Mr. Angelo King

Mr. Angelo King
RLabs Academy Manager
angel@rlabs.org



**CONCERTS
IN THE PARK**
Free Community Concerts

YMCA
ATHLONE



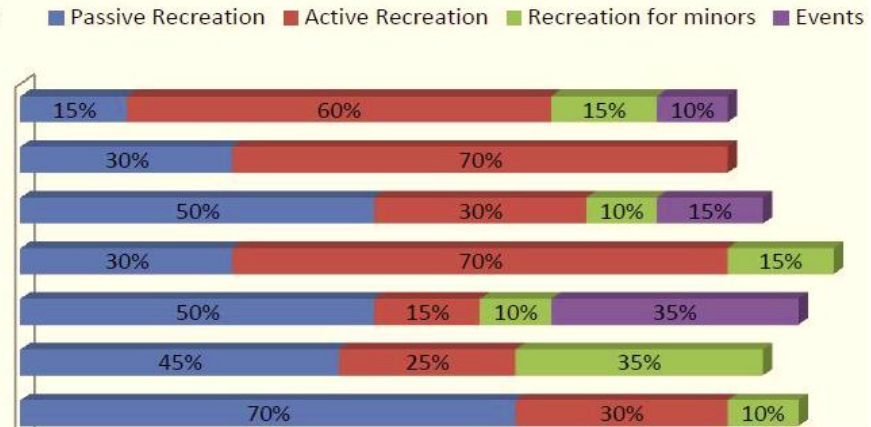
CITY OF CAPE TOWN
ISIXEKO SASEKAPA
STAD KAAPSTAD

Independent Customer Satisfaction Survey: Parks

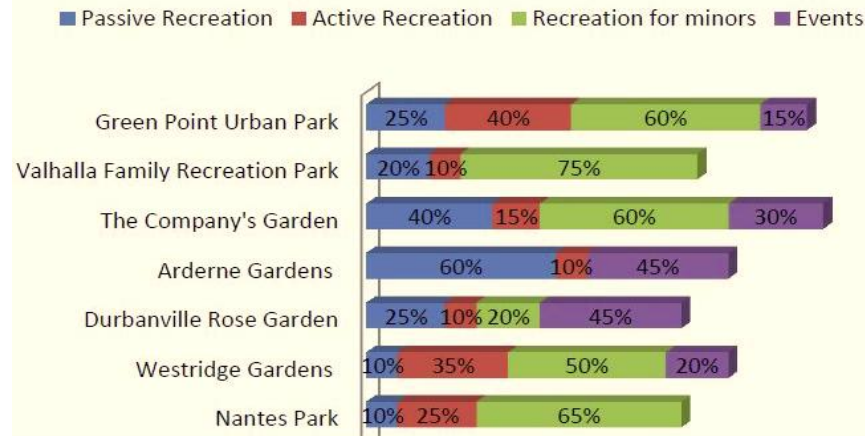
Week day Morning Activities



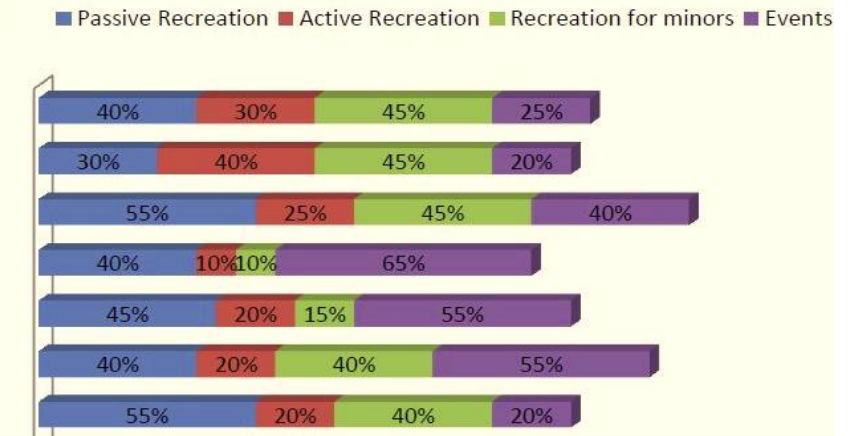
Week day Afternoon Activities



Weekend Morning Activities



Weekend Afternoon Activities





CITY OF CAPE TOWN
ISIXEKO SASEKAPA
STAD KAAPSTAD

Thank You

For queries contact (Jacques.Cedras@capetown.gov.za)

Making progress possible. Together.