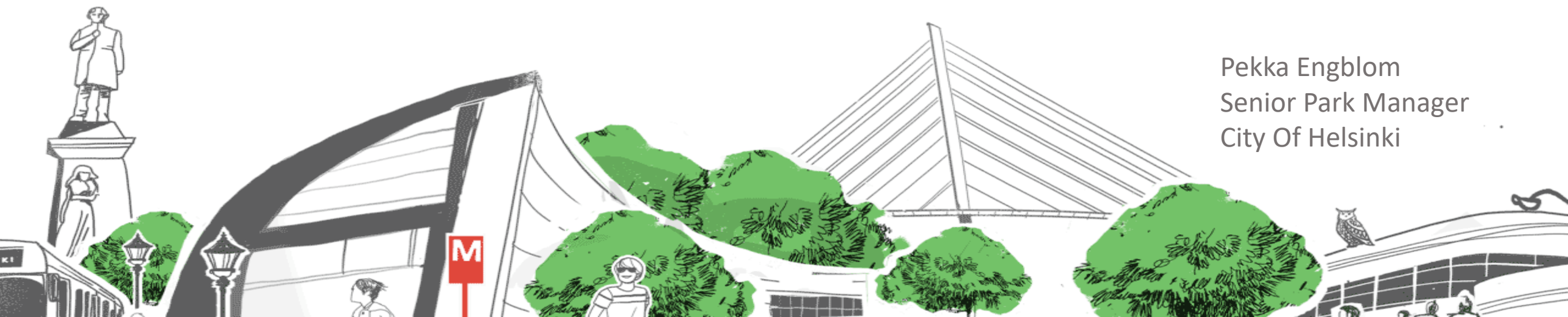




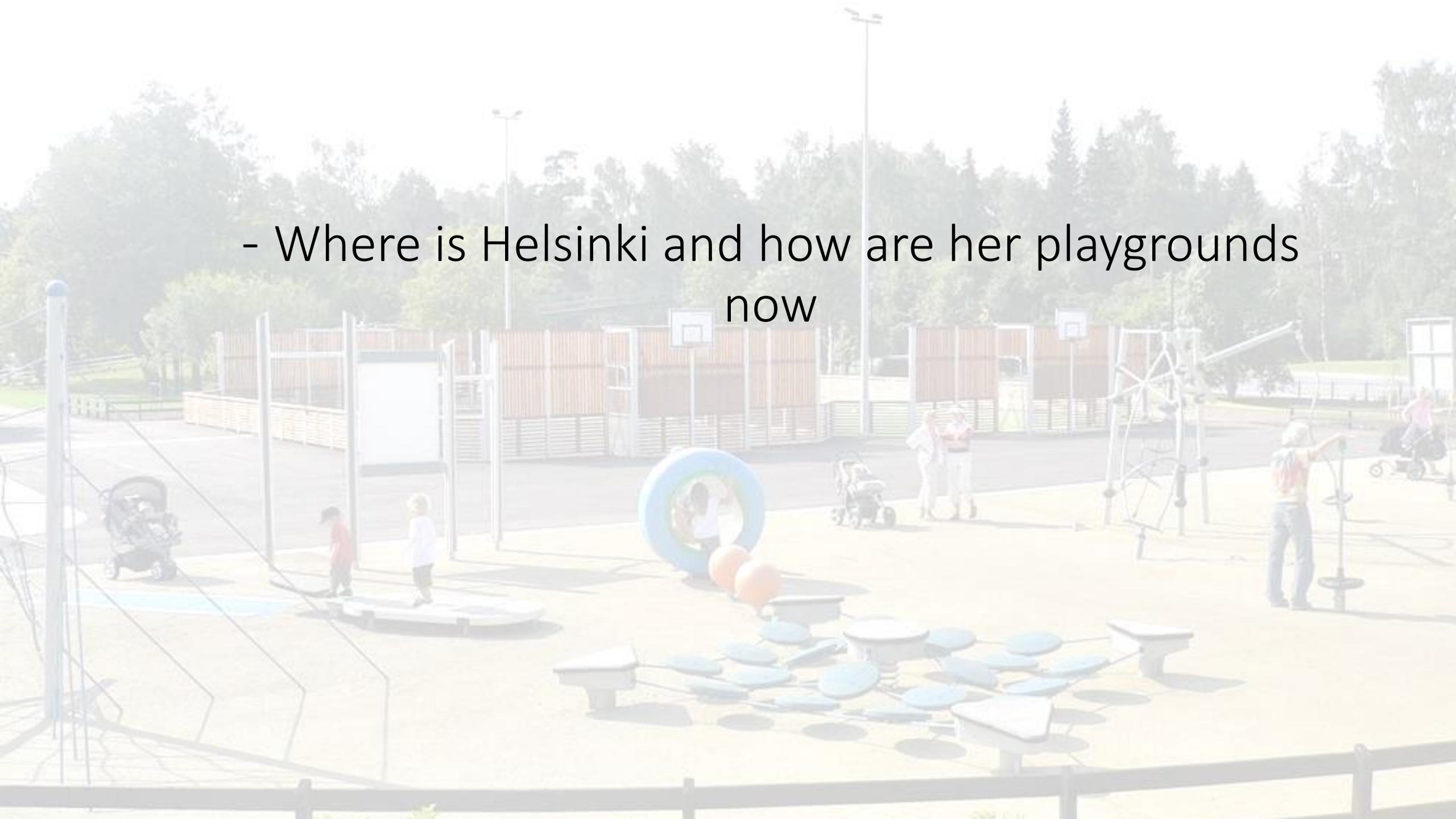
Helsingin kaupunki
Rakennusvirasto

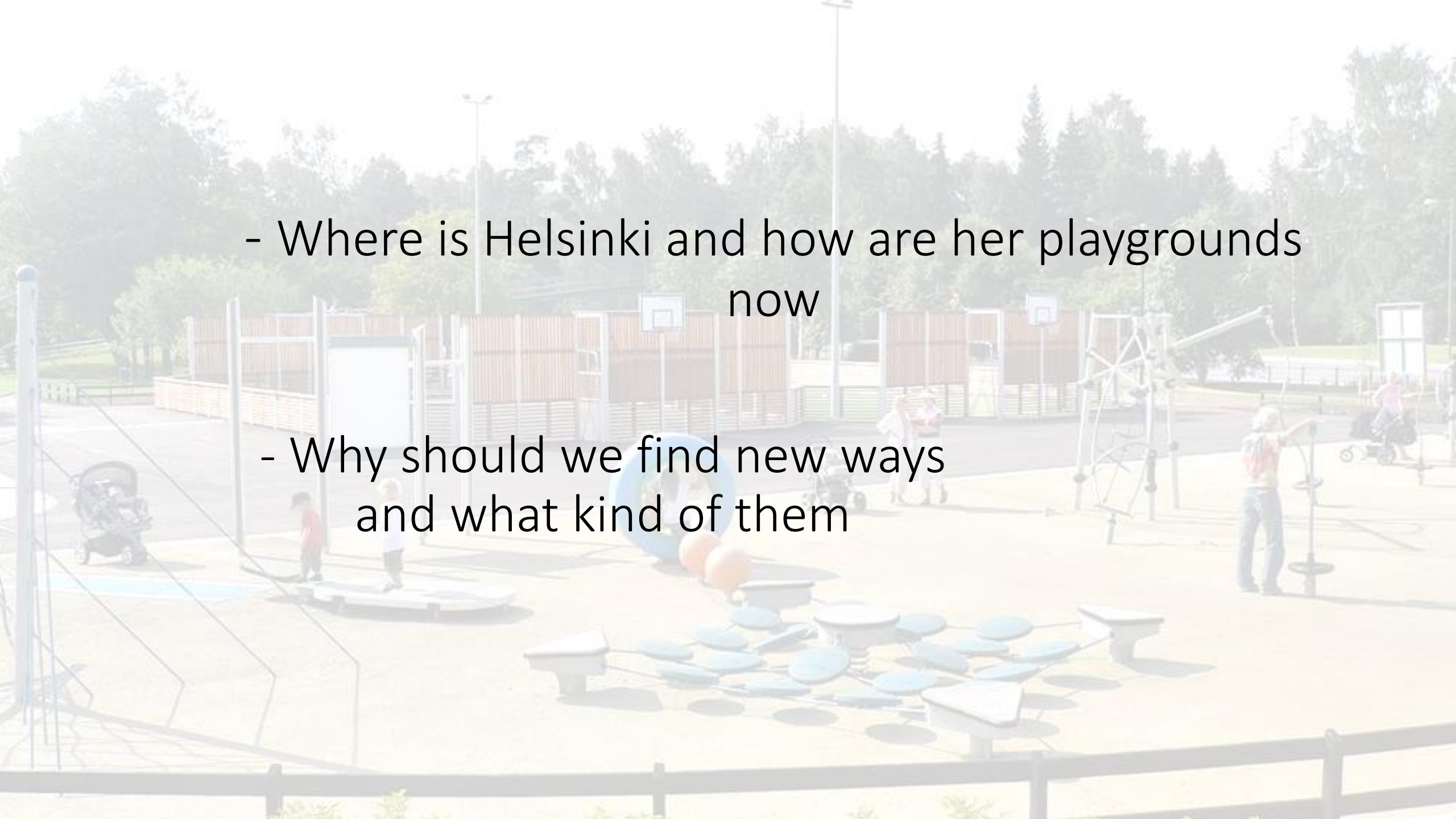
Purchasing Playgrounds as a total service

Pekka Engblom
Senior Park Manager
City Of Helsinki



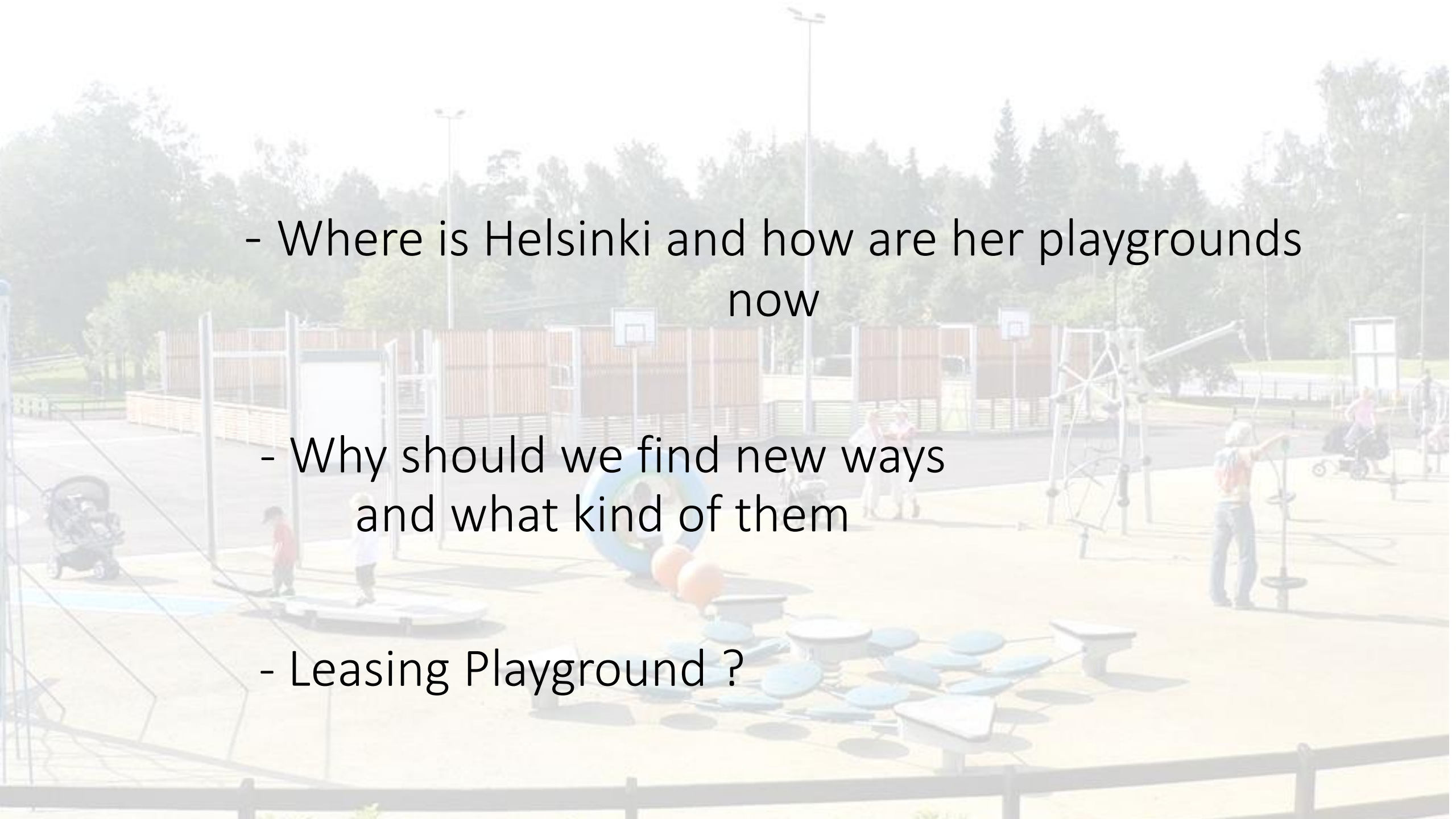
- Where is Helsinki and how are her playgrounds now





- Where is Helsinki and how are her playgrounds
now

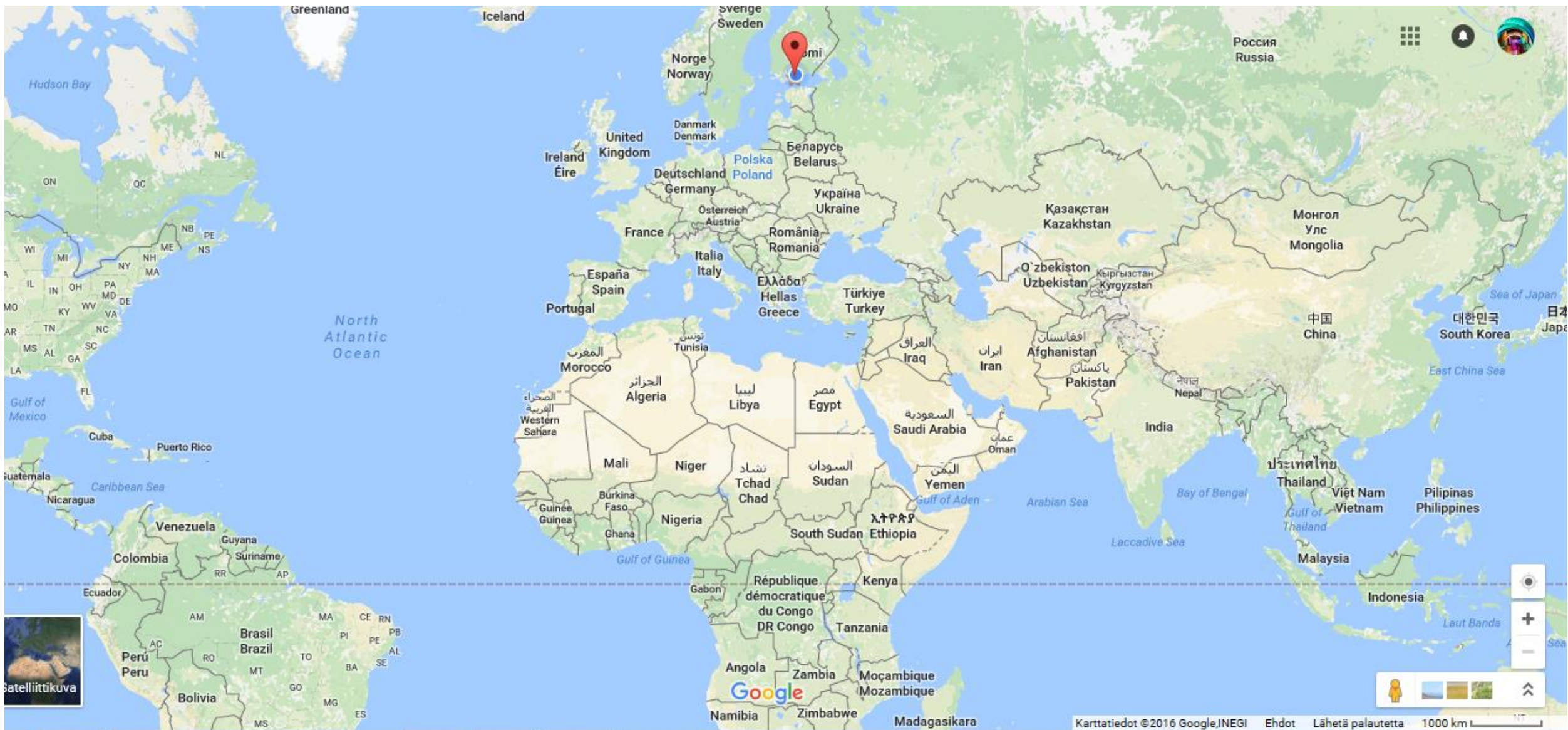
- Why should we find new ways
and what kind of them



- Where is Helsinki and how are her playgrounds now

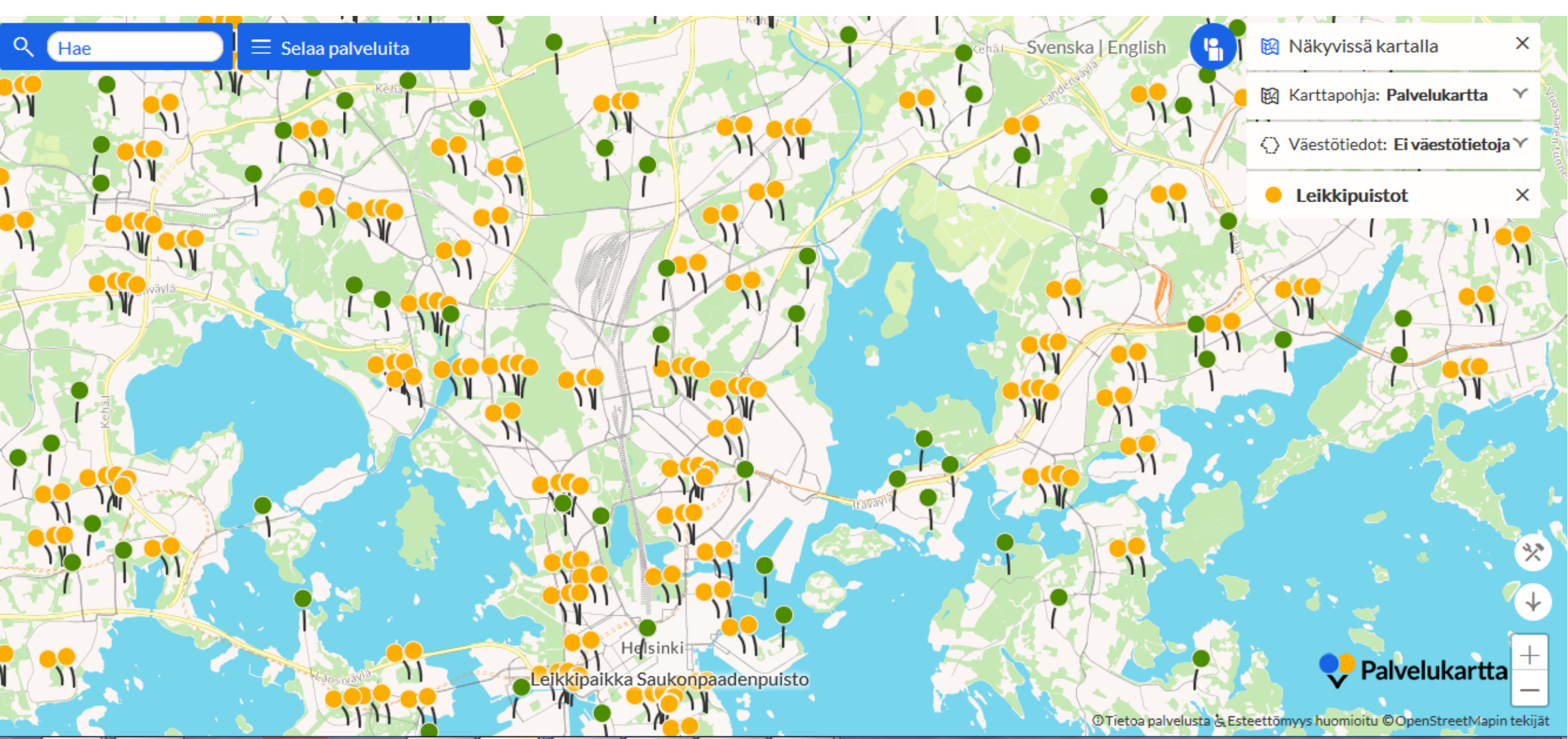
- Why should we find new ways and what kind of them

- Leasing Playground ?



North 60, East 25



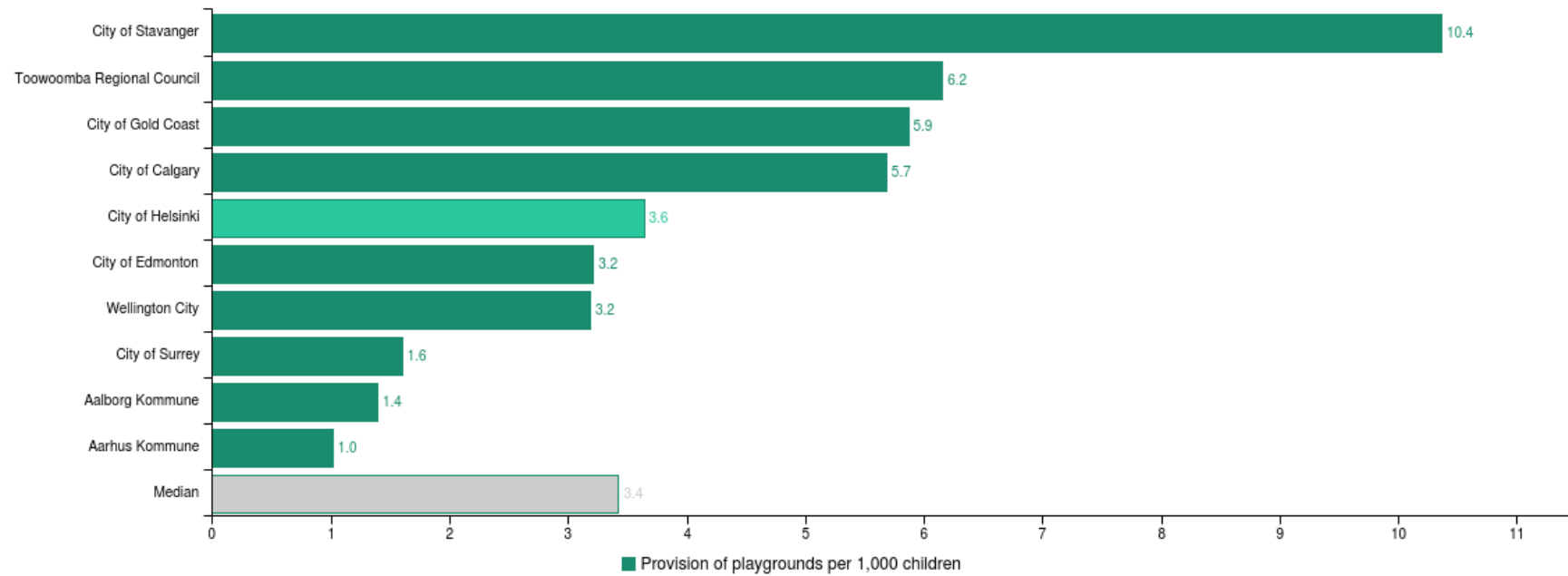


300 playgrounds

Provision

A. Provision

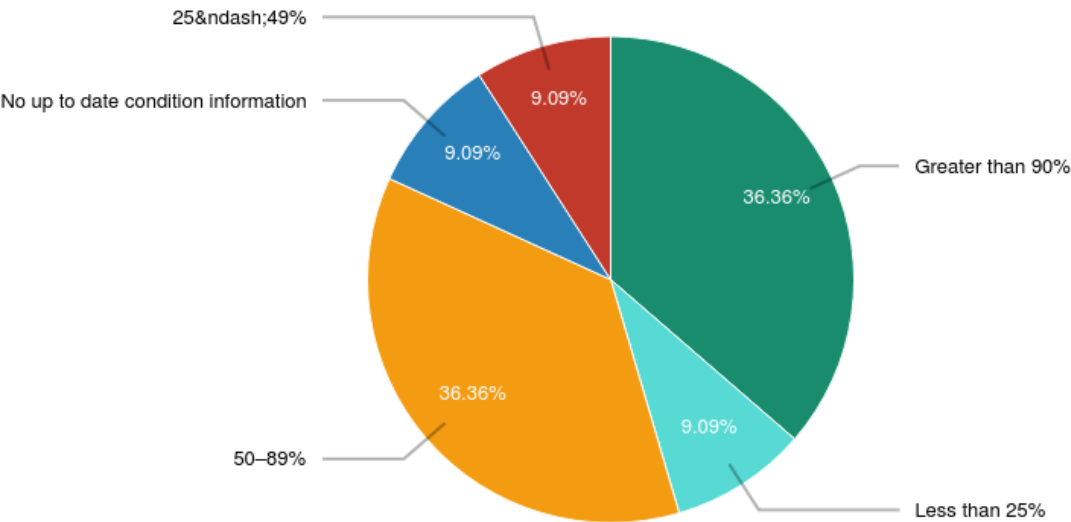
Number of playgrounds per 1,000 children



Asset management

D. Infrastructure Management

Completeness of asset condition information



Finland	
City of Helsinki	Less than 25%

Who should plan, construct, own and maintain them

Helsinki pays 180 000 €, 2 760 000 ZAR
for storage of City Council's Park Assets



Operating budget



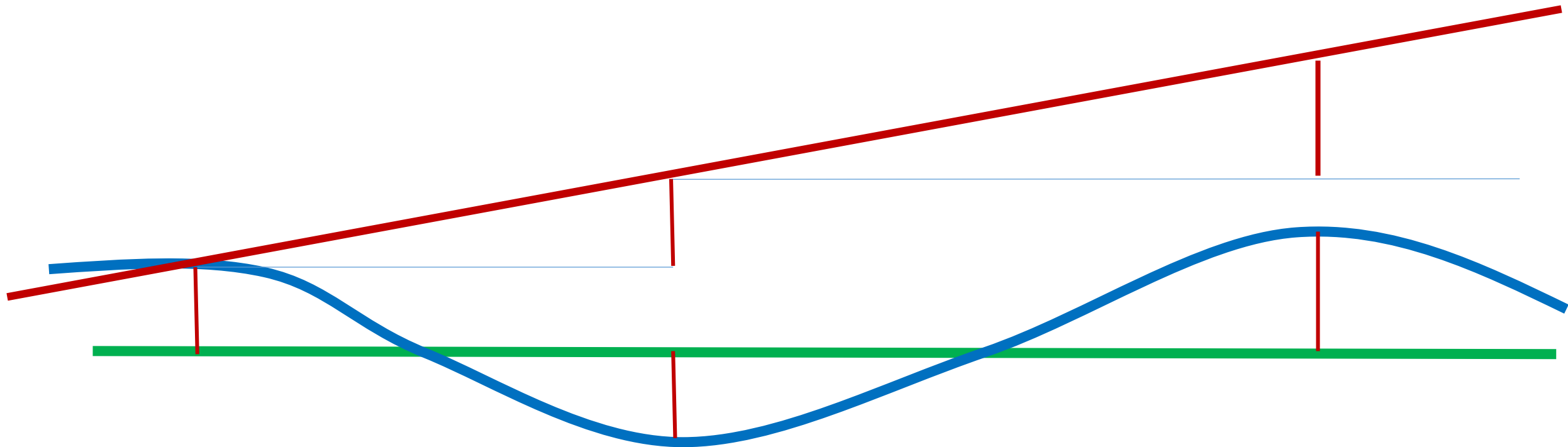
Operating budget
Capital



Operating budget

Capital

Capital renewal budget shortfall



- Budgeting is not based on condition information and true depreciation value. That leads to reactive maintenance and renewals

Leasing-Playground for 15 years

- Includes all equipment and maintenance
- Constantly up-to-date equipment in good condition
- No need for capital renewal
- Less trouble and work for managers

Condition rating

5 25%

4 45%

3 30%

2 not acceptable

1 not acceptable



1955